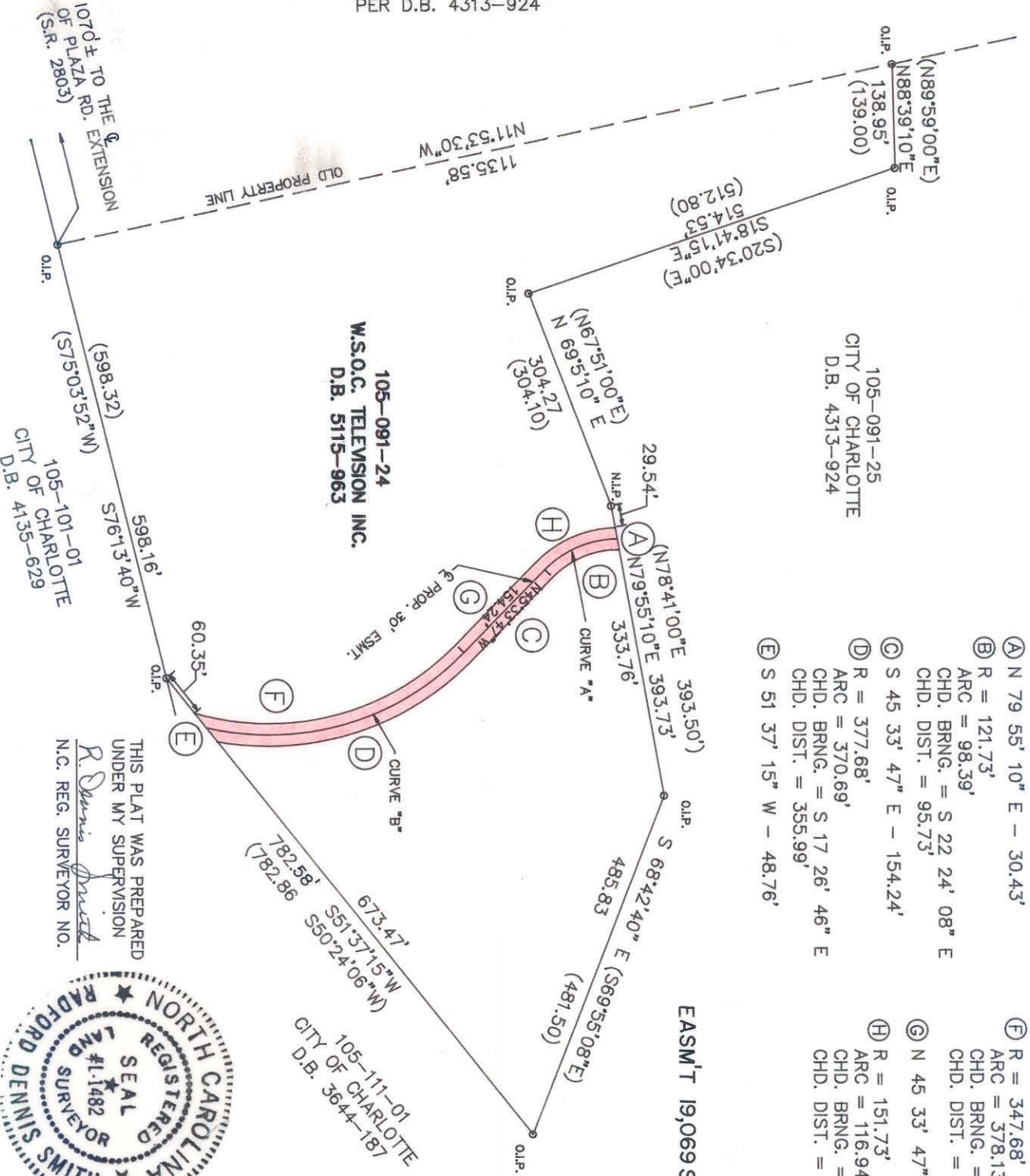


PER D.B. 4313-924



- Ⓐ N 79 55' 10" E - 30.43'
- Ⓑ R = 121.73'
ARC = 98.39'
CHD. BRNG. = S 22 24' 08" E
CHD. DIST. = 95.73'
- Ⓒ S 45 33' 47" E - 154.24'
- Ⓓ R = 377.68'
ARC = 370.69'
CHD. BRNG. = S 17 26' 46" E
CHD. DIST. = 355.99'
- Ⓔ S 51 37' 15" W - 48.76'

- Ⓕ R = 347.68'
ARC = 378.13'
CHD. BRNG. = N 14 24' 21" W
CHD. DIST. = 359.77'
- Ⓖ N 45 33' 47" W - 154.24'
- Ⓗ R = 151.73'
ARC = 116.94'
CHD. BRNG. = N 23 29' 20" W
CHD. DIST. = 114.07'

- CURVE DATA:**
- CURVE "A"
R = 136.73
ARC. = 107.66
CHD. BRNG. = N23°00'20"W
CHD. DIST. = 104.90
 - CURVE "B"
R = 362.68
ARC. = 373.76
CHD. BRNG. = N16°02'25"W
CHD. DIST. = 357.44

EASMT 19,069 S.F. = 0.438 AC.

O.I.P. OLD IRON PIN
N.I.P. NEW IRON PIN

105-091-24
W.S.O.C. TELEVISION INC.
D.B. 5115-963

105-111-01
CITY OF CHARLOTTE
D.B. 3644-187

105-101-01
CITY OF CHARLOTTE
D.B. 4135-629

THIS PLAT WAS PREPARED
UNDER MY SUPERVISION
R. Dennis Smith
N.C. REG. SURVEYOR NO.



THIS MAP WAS PREPARED FOR THE PURPOSE OF
EASEMENT ACQUISITION ONLY AND IS NOT INTENDED
TO BE A BOUNDARY SURVEY OF THE TOTAL
PROPERTY SHOWN.

NOTE:
PROPERTY CORNERS SHOWN AS OPEN CIRCLES
WERE LOCATED BY ACTUAL SURVEY. BEARINGS
AND DISTANCES SHOWN IN PARENTHESES ARE
BASED ON W.S.O.C. DEED 5115-PG. 963

<p>CHARLOTTE ENGINEERING DEPARTMENT</p>		JOB NO. 278-083
<p>PROPOSED 30' EASEMENT</p>		FILE NO.
<p>PROPERTY OF W.S.O.C. TELEVISION</p>		SHEET 1 OF 1
<p>REVISIONS</p> <p>ESMT. SIZE RBL 4/6/86</p> <p>ESMT. DESCRIPTION RBL 8/23/89</p>	<p>DRAWN BY M.K.C./AGAD</p> <p>CHECKED BY <i>RLS</i></p> <p>DATE 2/8/89</p>	<p>SCALE 1"=200'</p>

105-091-24