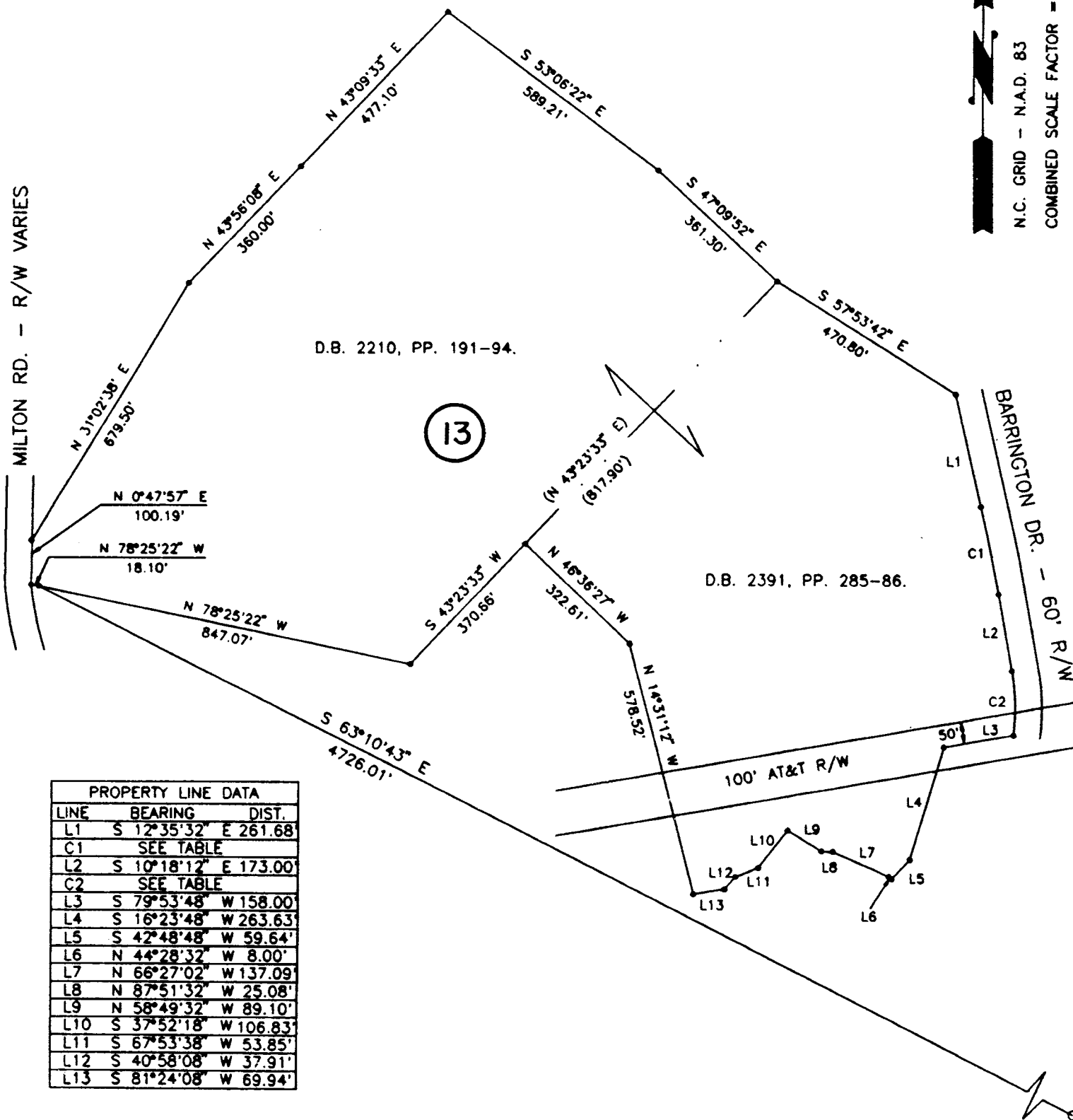


TOTAL BOUNDARY

MILTON RD. - R/W VARIES



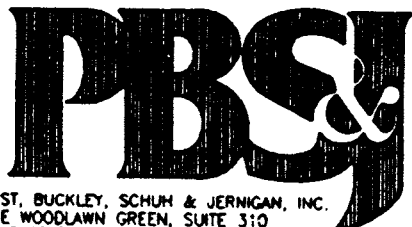
N.C. GRID - N.A.D. 83  
COMBINED SCALE FACTOR = .9998362



PROPERTY LINE DATA		
LINE	BEARING	DIST.
L1	S 12°35'32" E	261.68'
C1	SEE TABLE	
L2	S 10°18'12" E	173.00'
C2	SEE TABLE	
L3	S 79°53'48" W	158.00'
L4	S 16°23'48" W	263.63'
L5	S 42°48'48" W	59.64'
L6	N 44°28'32" W	8.00'
L7	N 66°27'02" W	137.09'
L8	N 87°51'32" W	25.08'
L9	N 58°49'32" W	89.10'
L10	S 37°52'18" W	106.83'
L11	S 67°53'38" W	53.85'
L12	S 40°58'08" W	37.91'
L13	S 81°24'08" W	69.94'

CURVE DATA					
DESC.	DELTA	RADIUS	ARC	CHDBRG	CHDDIST.
C1	2°17'20"	4975.16'	198.78'	S 11°26'52" E	198.77'
C2	17°31'39"	475.66'	145.51'	S 1°32'23" E	144.94'

NCGS MON. "RANDY"  
N 546702.660  
E 1481061.021



POST, BUCKLEY, SCHUH & JERNIGAN, INC.  
ONE WOODLAWN GREEN, SUITE 310  
CHARLOTTE, NORTH CAROLINA 28217



CHARLOTTE  
ENGINEERING DEPARTMENT

REVISIONS		JOB NO.
		20-048
		DWG NO.
		MULTI-DWG
		SHEET
		2
		OF
		2

MILTON ROAD IMPROVEMENTS  
PROJECT NO. 512-89-062

PROPERTY OF  
CHARLOTTE-MECKLENBURG BOARD OF EDUCATION  
TAX MAP CODE 107-11-PARCEL 6  
CITY OF CHARLOTTE, MECKLENBURG COUNTY, N.C.

DRAWN BY B.L.H.  
CHECKED BY  
SURVEY SUPERVISOR

DATE 4/4/83 SCALE 1" = 300'

107-11-06