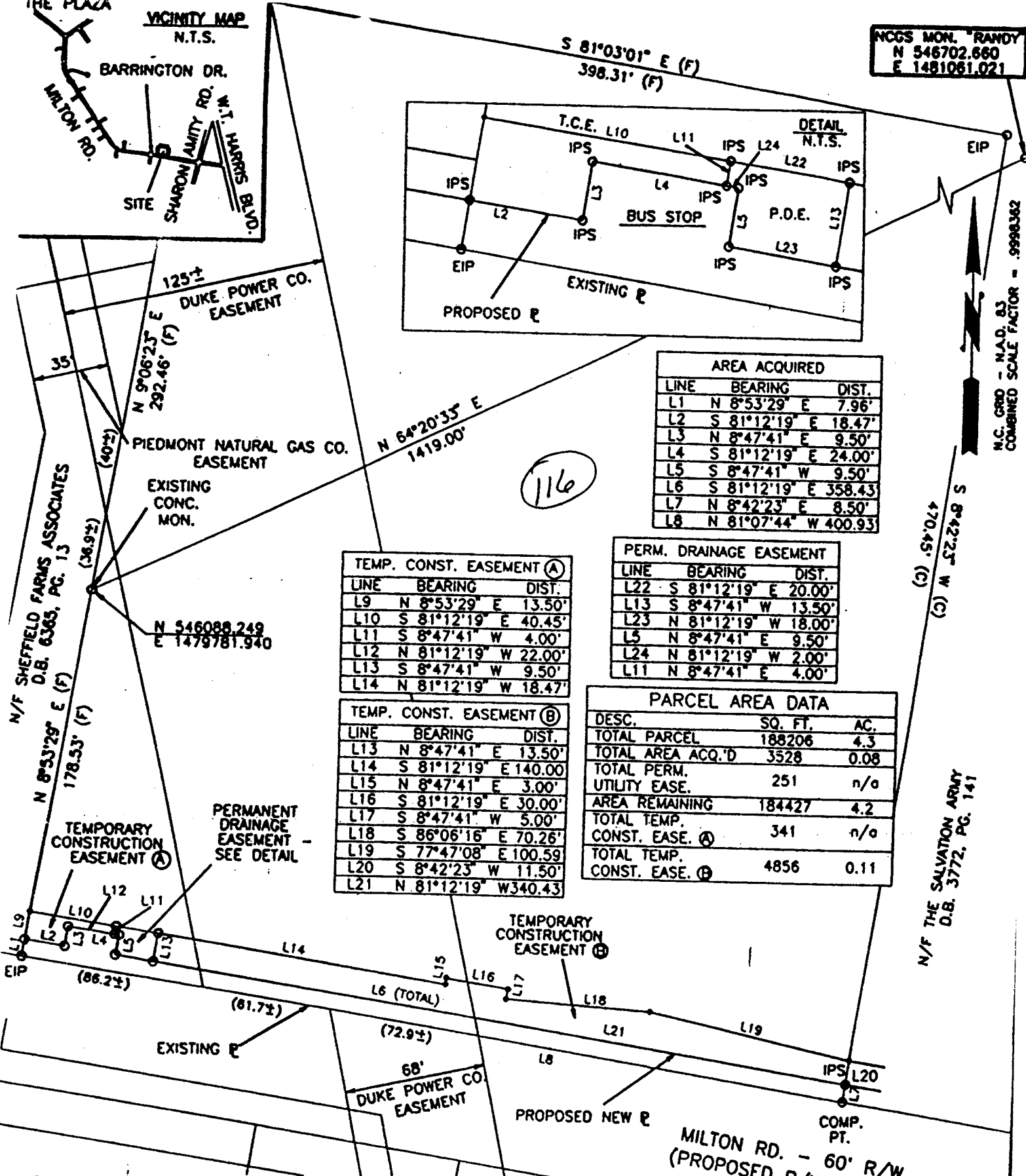


NCGS MON. "RANDY"
N 546702.660
E 1481061.021



AREA ACQUIRED

LINE	BEARING	DIST.
L1	N 8°53'29" E	7.96'
L2	S 81°12'19" E	18.47'
L3	N 8°47'41" E	9.50'
L4	S 81°12'19" E	24.00'
L5	S 8°47'41" W	9.50'
L6	S 81°12'19" E	358.43'
L7	N 8°42'23" E	8.50'
L8	N 81°07'44" W	400.93'

TEMP. CONST. EASEMENT (A)

LINE	BEARING	DIST.
L9	N 8°53'29" E	13.50'
L10	S 81°12'19" E	40.45'
L11	S 8°47'41" W	4.00'
L12	N 81°12'19" W	22.00'
L13	S 8°47'41" W	9.50'
L14	N 81°12'19" W	18.47'

PERM. DRAINAGE EASEMENT

LINE	BEARING	DIST.
L22	S 81°12'19" E	20.00'
L13	S 8°47'41" W	13.50'
L23	N 81°12'19" W	18.00'
L5	N 8°47'41" E	9.50'
L24	N 81°12'19" W	2.00'
L11	N 8°47'41" E	4.00'

TEMP. CONST. EASEMENT (B)

LINE	BEARING	DIST.
L13	N 8°47'41" E	13.50'
L14	S 81°12'19" E	140.00'
L15	N 8°47'41" E	3.00'
L16	S 81°12'19" E	30.00'
L17	S 8°47'41" W	5.00'
L18	S 86°06'16" E	70.26'
L19	S 77°47'08" E	100.59'
L20	S 8°42'23" W	11.50'
L21	N 81°12'19" W	340.43'

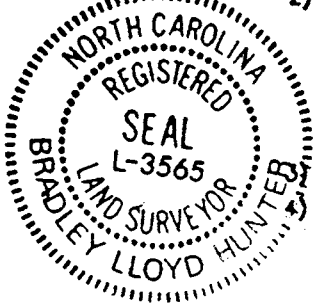
PARCEL AREA DATA

DESC.	SQ. FT.	AC.
TOTAL PARCEL	188206	4.3
TOTAL AREA ACQ'D	3528	0.08
TOTAL PERM. UTILITY EASE.	251	n/a
AREA REMAINING	184427	4.2
TOTAL TEMP. CONST. EASE. (A)	341	n/a
TOTAL TEMP. CONST. EASE. (B)	4856	0.11

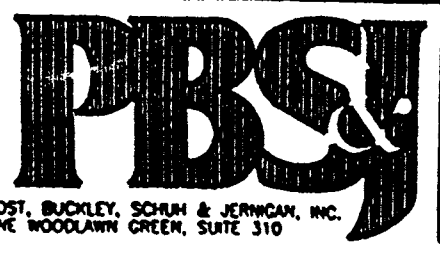
I, Bradley Lloyd Hunter, certify that this plat was drawn under my supervision. This plat is a compilation of field and deed data and is NOT intended to be a boundary survey of the property shown.

- REFERENCES:**
- 1) NCGS MONUMENTS "RANDY" AND "TAYLOR".
 - 2) CHARLOTTE ENG. DEPT. R/W PLANS FOR PROPOSED MILTON RD. IMPROVEMENTS PREP. BY PBS&J, CHARLOTTE, DATED 10/25/93. (PARCEL #116) D.B. 1817, PG. 427. D.B. 2603, PG. 9.

- NOTES:**
- 1) EIP DENOTES EXISTING IRON PIPE.
 - 2) IPS DENOTES IRON PIPE SET.
 - 3) ALL DISTANCES ARE HORIZONTAL GROUND.
 - 4) AREAS BY COORDINATE COMPUTATION.
 - 5) (C) DENOTES COMPUTED.
 - 6) (F) DENOTES FIELD MEASUREMENT.



Bradley Lloyd Hunter
Bradley Lloyd Hunter, NCRLS # L-3565



REVISIONS		JOB NO.	
		79-04-15	
		DWG NO.	
		MULTI.DWG	
DRAWN BY: BLH		SHEET	
CHECKED BY:		1	
		OF	

CHARLOTTE ENGINEERING DEPARTMENT
MILTON ROAD IMPROVEMENTS PROJECT NO. 5'2-89-062
PROPERTY OF DUKE POWER COMPANY TAX MAP CODE 107-031-PARCEL 1 CITY OF CHARLOTTE, MECKLENBURG COUNTY, N.C.

107-031-01