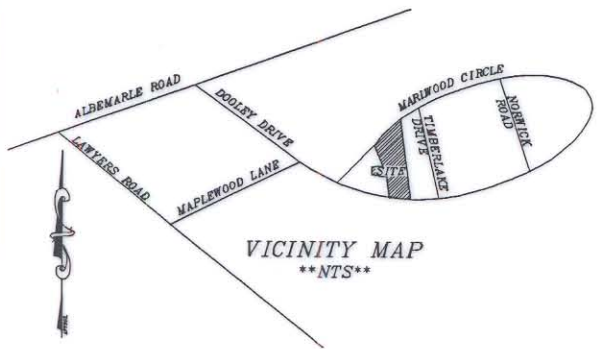
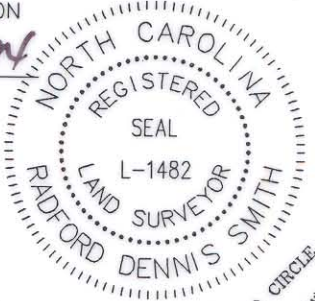


THIS PLAT WAS PREPARED UNDER MY SUPERVISION

R. Dennis Smith 6-22-94

N.C. REG. LAND SURVEYOR NO. L-1482



VICINITY MAP
NTS

R = 318.34'
L = 166.13'
CHORD BEARING
N55°26'49"E
CHORD LENGTH
164.25'

CHARLES GODBOLT
DB 6058 PG 671
TAX CODE
109-251-16

JOHN STARNES
DB 6941 PG 135
TAX CODE
109-251-15

GENE WYKE
DB 3617 PG 186
TAX CODE
109-251-14

MITCHELL HAGLER
DB 3852 PG 486
TAX CODE
109-251-13

HUGH REID
DB 4034 PG 709
TAX CODE
109-251-12

HARRY E. BROWN
DB 4019 PG 240
TAX CODE
109-251-11

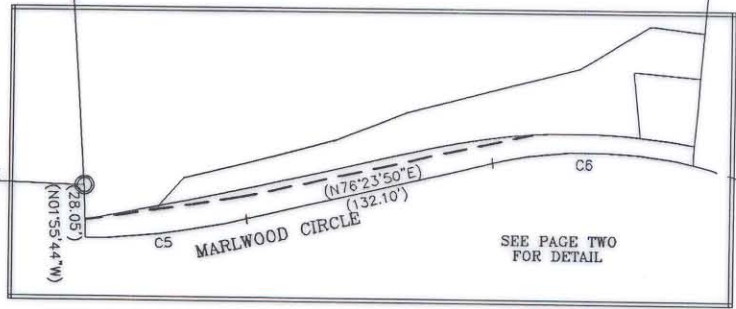
GEORGE FOGLE
DB 4046 PG 946
TAX CODE
109-251-10

CURVE	RADIUS	LENGTH	CHORD	BEARING
C5	381.96'	85.44'	85.26'	N82°48'20"E
C6	236.34'	105.37'	104.50'	S89°53'40"E



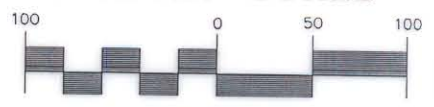
GENE L. WYKE
DB 3942 PG 963
TAX CODE
109-251-17

④



SEE PAGE TWO FOR DETAIL

GRAPHIC SCALE



(IN FEET)
1 inch = 100 ft.

THIS PLAT WAS PREPARED FOR THE PURPOSE OF ACQUISITION ONLY, AND IS NOT INTENDED TO BE A BOUNDARY SURVEY OF PROPERTY SHOWN.

PREPARED BY:
CITY OF CHARLOTTE
ENGINEERING DEPARTMENT
600 EAST FOURTH STREET
CHARLOTTE, NC 28202
704-336-2291

REVISIONS		JOB NO. 92272
DRAWN BY db		
CHECKED BY DHS		SHEET 1
SURVEY SUPER. <i>RDS</i>		
DATE 3-18-94		SCALE 1"=100'

CHARLOTTE ENGINEERING DEPARTMENT
MARLWOOD CULVERT STORM DRAIN CONSTRUCTION
PROPERTY OF GENE L. WYKE
CHARLOTTE, MECKLENBURG CO., NC

109-251-17