

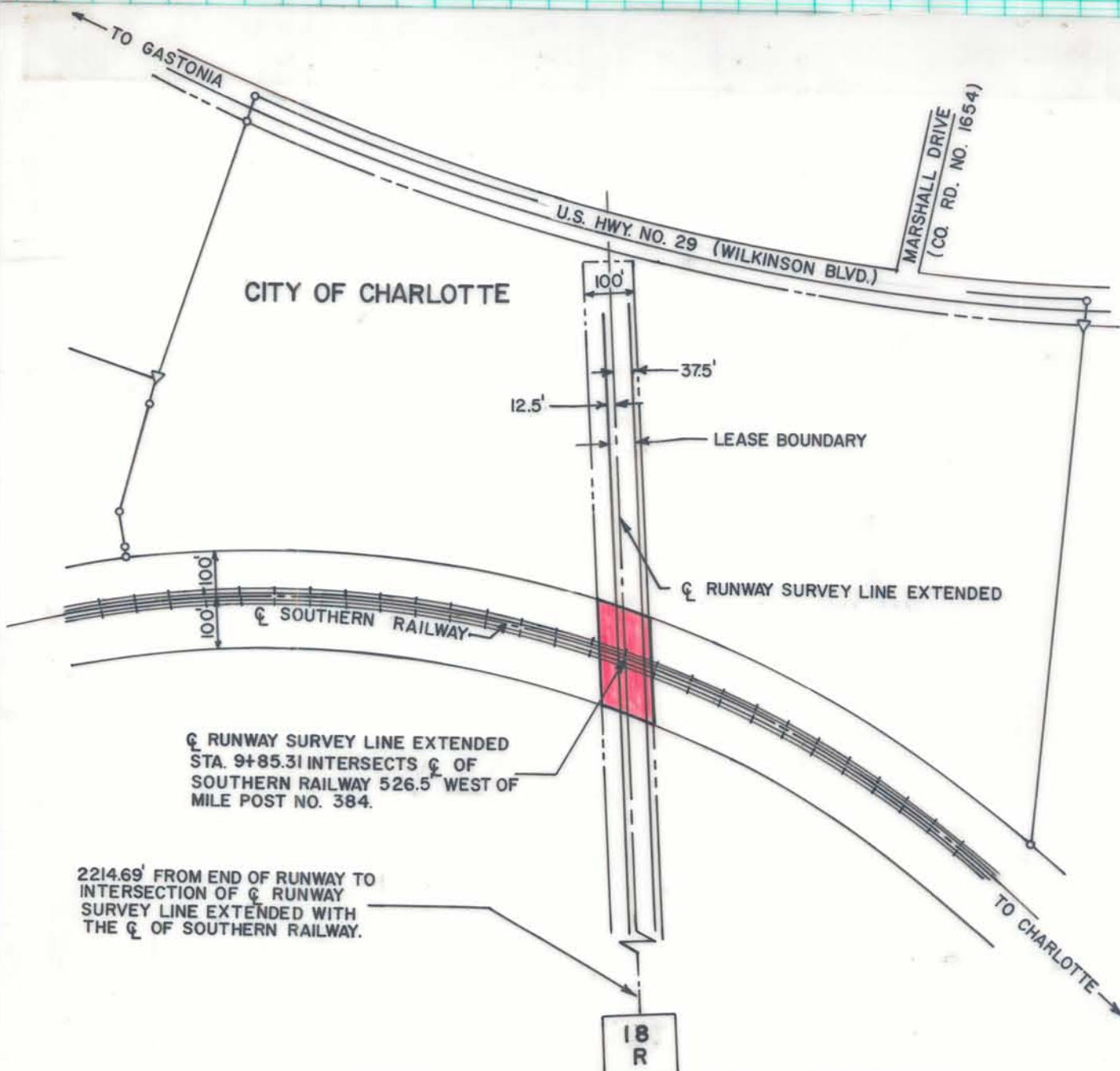
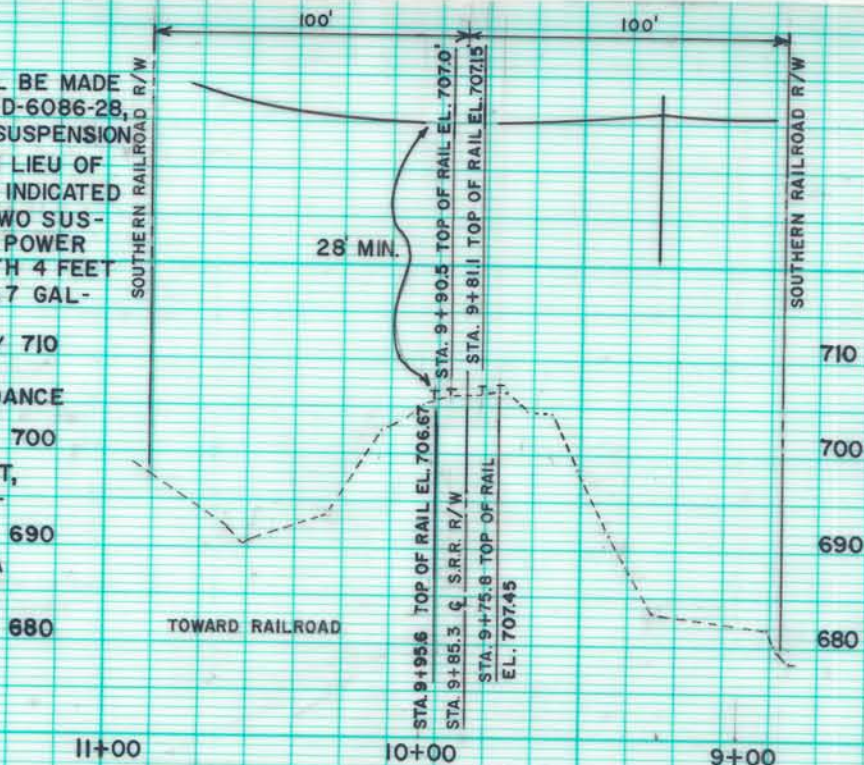
NOTES:

1. CABLE CONNECTIONS SHALL BE MADE IN ACCORDANCE WITH DWG. D-6086-2B, EXCEPT THAT, TWO 5/16" SUSPENSION CABLES SHALL BE USED IN LIEU OF THE SINGLE 1/2" CABLE AS INDICATED IN DWG. D-6086-2B. THE TWO SUSPENSION CABLES, ONE FOR POWER AND ONE FOR CONTROL WITH 4 FEET SEPARATION SHALL BE 6 x 7 GALVANIZED MONITOR STEEL RIGGING AND GUY ROPES BY 710 USS TIGER BRAND (OR APPROVED EQUAL), IN ACCORDANCE WITH THE SOUTHERN RAILROAD REGULATIONS, THE CABLES SHALL BE 28' FEET, OR MORE, ABOVE THE RAILROAD TRACK BED.

2. SEE ATTACHED COPY OF FAA PLAN AND PROFILE SHEET NO. 50-E-3117-5A.

PROFILE

SCALE: 1" = 60' HORIZONTAL
1" = 20' VERTICAL



CITY OF CHARLOTTE NORTH CAROLINA DEPARTMENT OF PUBLIC WORKS ENGINEERING DIVISION		
REVISIONS CHANGE CABLE LOCATION 7/27/81	FAA EASEMENT ON AIRPORT PROPERTY	JOB NO. FILE NO.
DRAWN BY AR CHECKED BY	PROPOSED MALS/R SYSTEM ON SOUTHERN RAILWAY R/W	SHEET 3 OF 3
CITY ENGINEER	DATE 3/2/81 SCALE 1" = 300'	