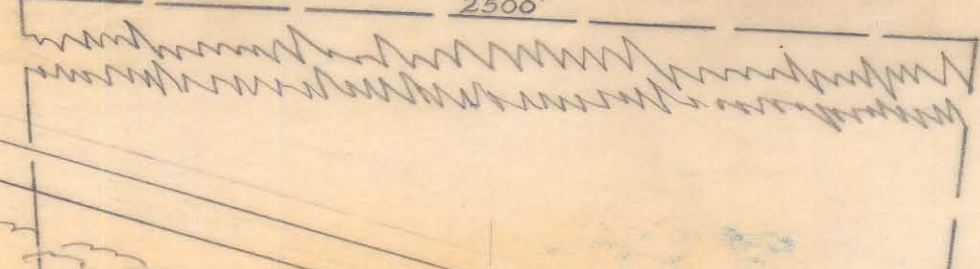


Top 25/88

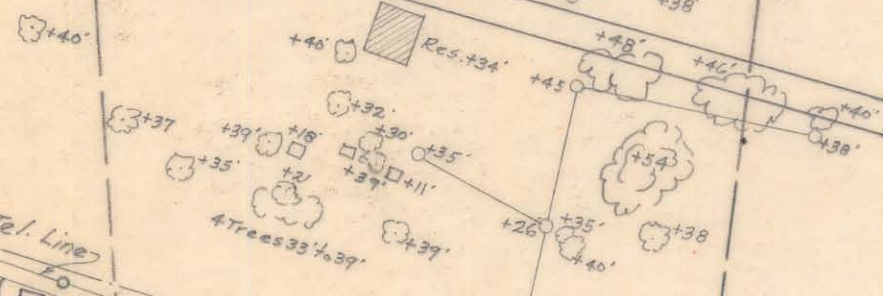
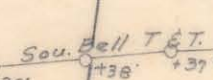
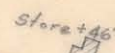
2500'



WILKINSON BLVD.
Tree Tops at 40:1 Glide Line
Woods



APPROACH ZONE
2 MILES
40:1 GLIDE



Postal Tel. Line
Signal Line

(Top of Poles on RR. R/W below 40:1 glide)



R/W
SOUTHERN R.W. 7

0+00
End of N-S Runway "E"

DOUGLAS AIRPORT
CHARLOTTE, N.C.

Scale: 1" = 200'
Sept. 17, 1947
Office of City Engineer
Charlotte, N.C.