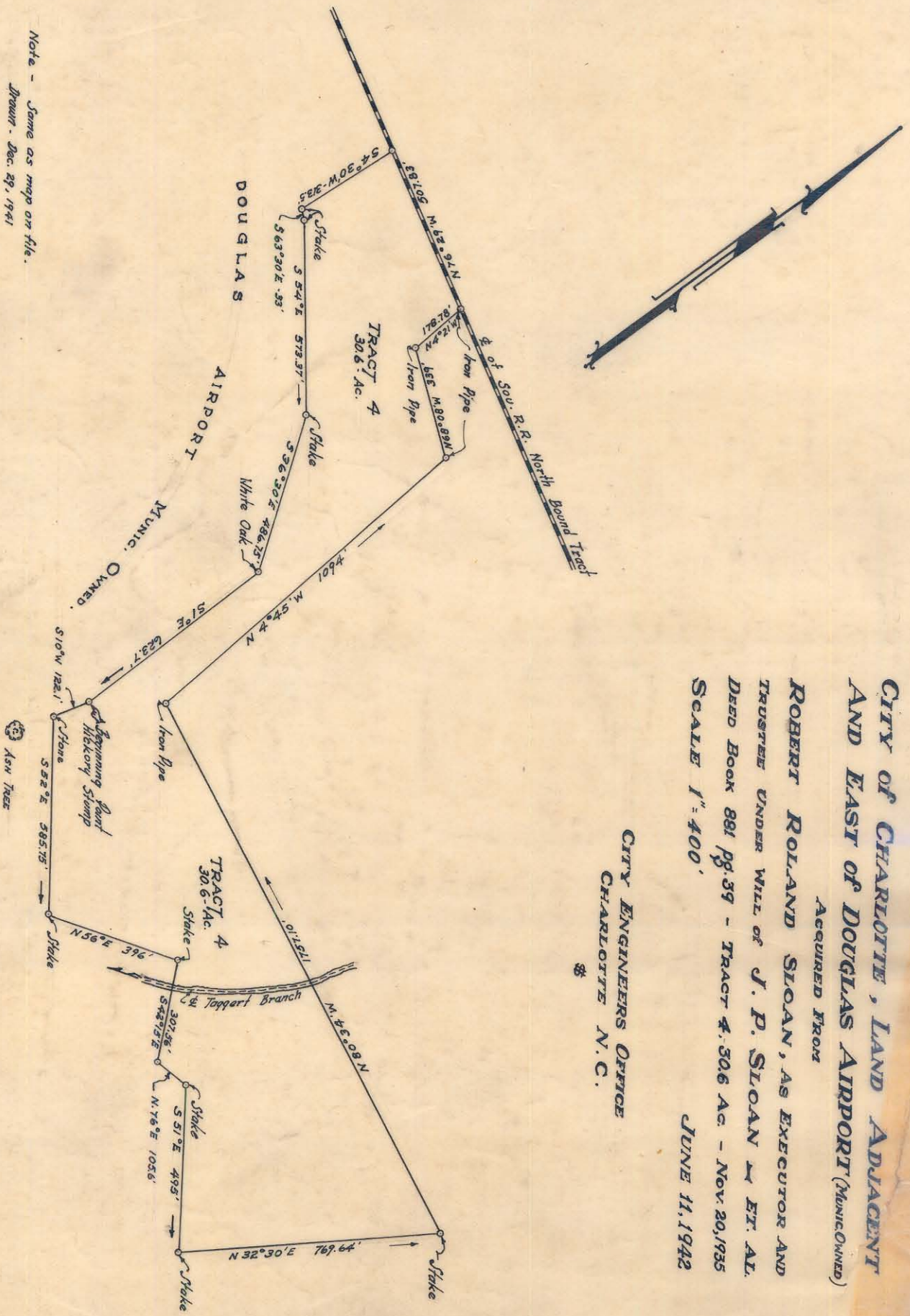


Note - Same as map on file.  
Drawn - Dec. 29, 1941



**CITY OF CHARLOTTE, LAND ADJACENT  
AND EAST OF DOUGLAS AIRPORT (MUNICIPAL OWNED)**

Acquired From  
**ROBERT ROLAND SLOAN, AS EXECUTOR AND  
TRUSTEE UNDER WILL OF J. P. SLOAN & ET. AL.**  
DEED BOOK 881 pg. 39 - TRACT 4, 30.6 Ac. - Nov. 20, 1935

SCALE 1" = 400'

JUNE 11, 1942

CITY ENGINEERS OFFICE  
CHARLOTTE N. C.

115-21  
72 # 0907