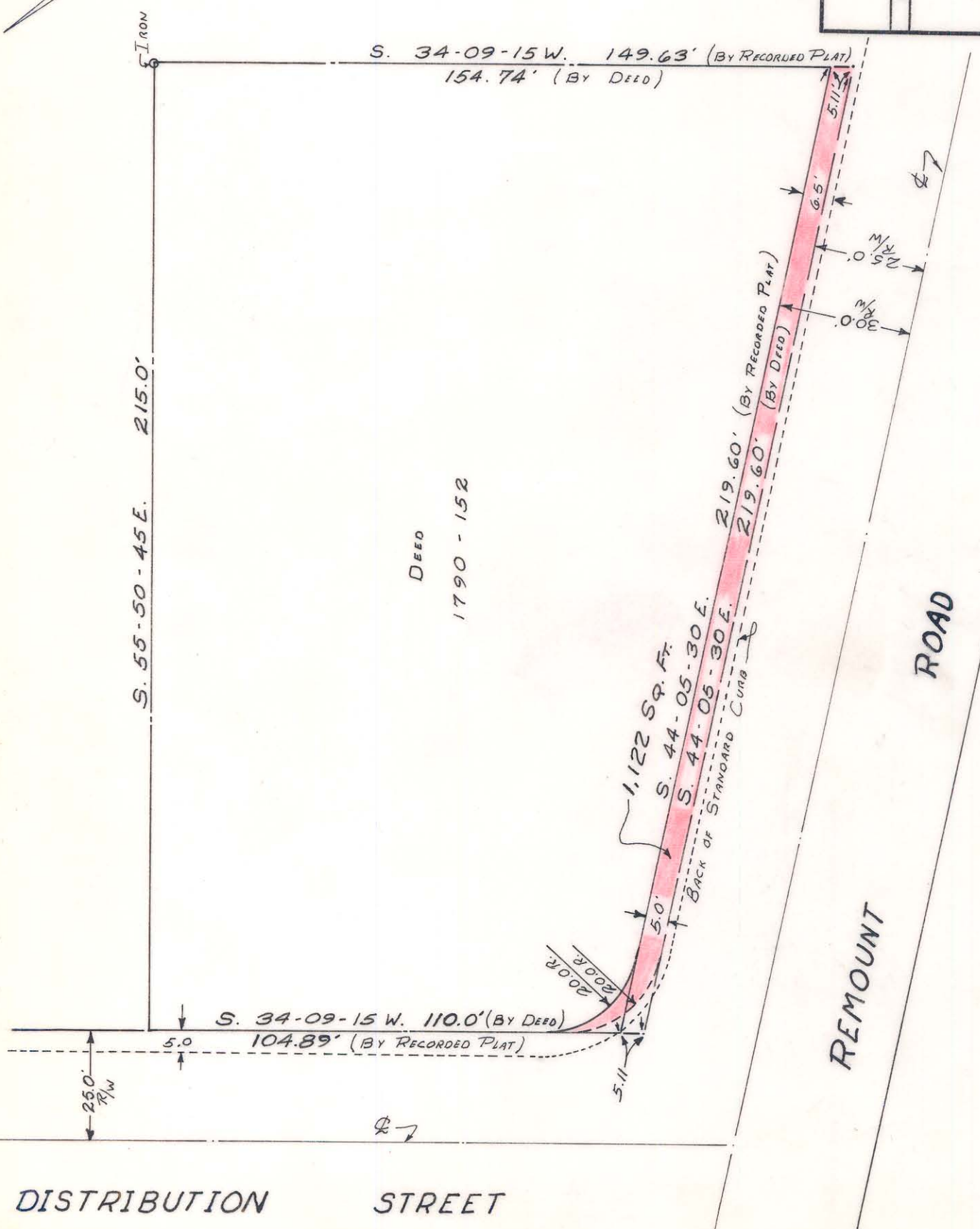


08-1-5-A



NOTE: Property corners shown circled were located by actual survey. Bearings are based on RECORDED MAP 7-775

Approved by \_\_\_\_\_ R/W Agent

This plat was prepared under my supervision *CD Reading*

N.C. Reg. Engineer No. 3659

CITY OF CHARLOTTE NORTH CAROLINA ENGINEERING DEPARTMENT		JOB NO.	SHEET / OF
REVISIONS		FILE NO.	
DRAWN BY G.R.H. CHECKED BY J.Z.Z.		PROPERTY OF FRANCES INVESTMENTS INC. E. L. VINSON SR.	
CITY ENGINEER		DATE APRIL 1970	SCALE 1"=30'
REMOUNT ROAD			

121-42-08 A-1-5-88