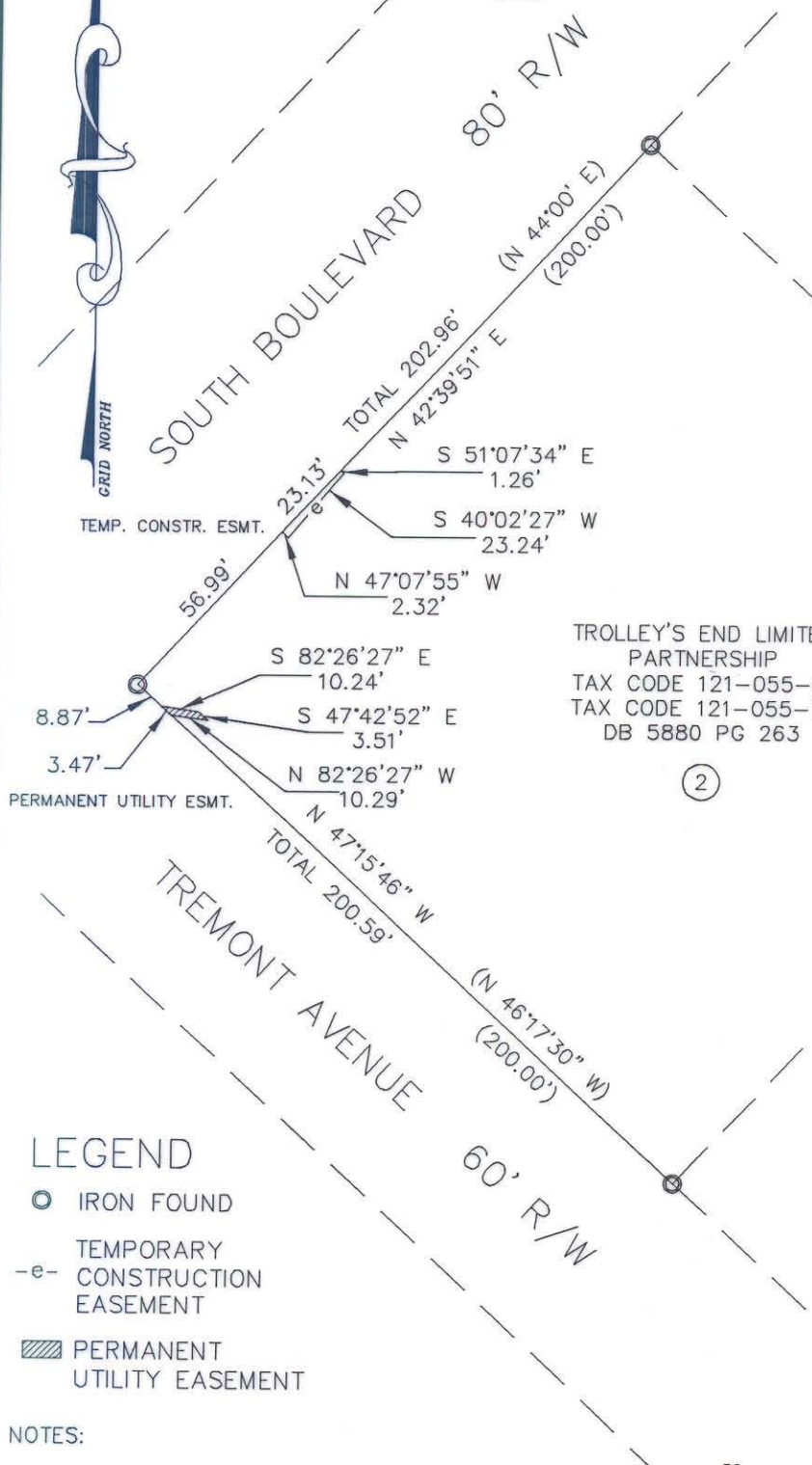
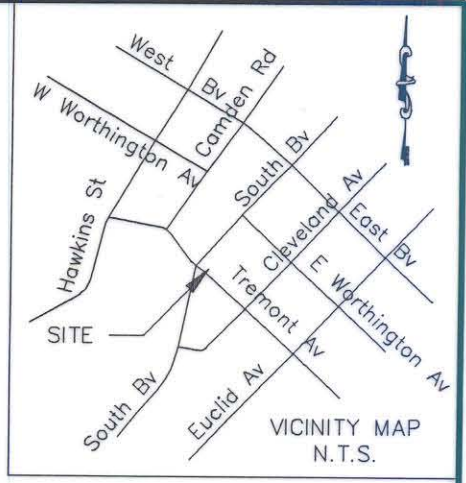
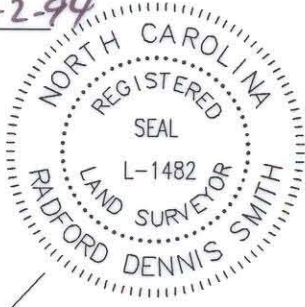


I, R. DENNIS SMITH, CERTIFY THAT THIS PLAT WAS DRAWN UNDER MY SUPERVISION.

R. Dennis Smith 8-2-94
 R. DENNIS SMITH
 N.C.R.L.S. L-1482



GUS P. MANDRAPILLIAS
 & WF. GEARY W.
 TAX CODE 121-055-16
 DB 5674 PG 481

ALLEN A. BAILEY
 TAX CODE 121-055-09
 DB 4877 PG 669

TROLLEY'S END LIMITED
 PARTNERSHIP
 TAX CODE 121-055-01
 TAX CODE 121-055-19
 DB 5880 PG 263

ROBERT E. LEE
 & WF. JUANITA M.
 TAX CODE 121-055-07
 DB 5363 PG 457

RUTH ANTHONY PURSER
 TAX CODE 121-055-03
 DB 3700 PG 511

LEGEND

- IRON FOUND
- e- TEMPORARY CONSTRUCTION EASEMENT
- ▨ PERMANENT UTILITY EASEMENT

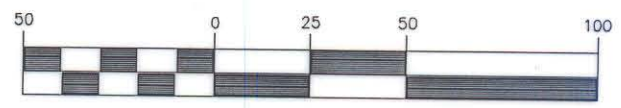
NOTES:

1. BEARINGS AND DISTANCES SHOWN IN PARENTHESES ARE BASED ON DEED INFORMATION.
2. BROKEN LINES INDICATE PROPERTY NOT SURVEYED.
3. TOTAL AREA BY DEED 39,999 SQ. FT.
4. AREA OF PERMANENT UTILITY EASEMENT 21 SQ. FT.
5. AREA REMAINING 39,978 SQ. FT.
6. AREA OF TEMPORARY CONSTRUCTION EASEMENT 41 SQ. FT.

PREPARED BY:
 CITY OF CHARLOTTE
 ENGINEERING DEPARTMENT
 600 EAST FOURTH STREET
 CHARLOTTE, NC 28202
 704-336-2291

THIS PLAT WAS PREPARED FOR THE PURPOSE OF ACQUISITION ONLY, AND IS NOT INTENDED TO BE A BOUNDARY SURVEY OF PROPERTY SHOWN.

GRAPHIC SCALE



(IN FEET)
 1 inch = 50 ft.

CHARLOTTE ENGINEERING DEPARTMENT		
REVISIONS	SOUTH BV. BUS. COR. PH. I PERMANENT UTILITY EASEMENT CHARLOTTE, MECKLENBURG CO., NC	JOB NO. 90252
		FILE NO. P2
DRAWN BY BMS	PROPERTY OF TROLLEY'S END LIMITED PARTNERSHIP	SHEET 1
CHECKED BY		OF 1
SURVEY SUPVR.	DATE 7-27-94	SCALE 1"=50'

DB8037
 PG 510

121-055-19/21
 121-055-C98