

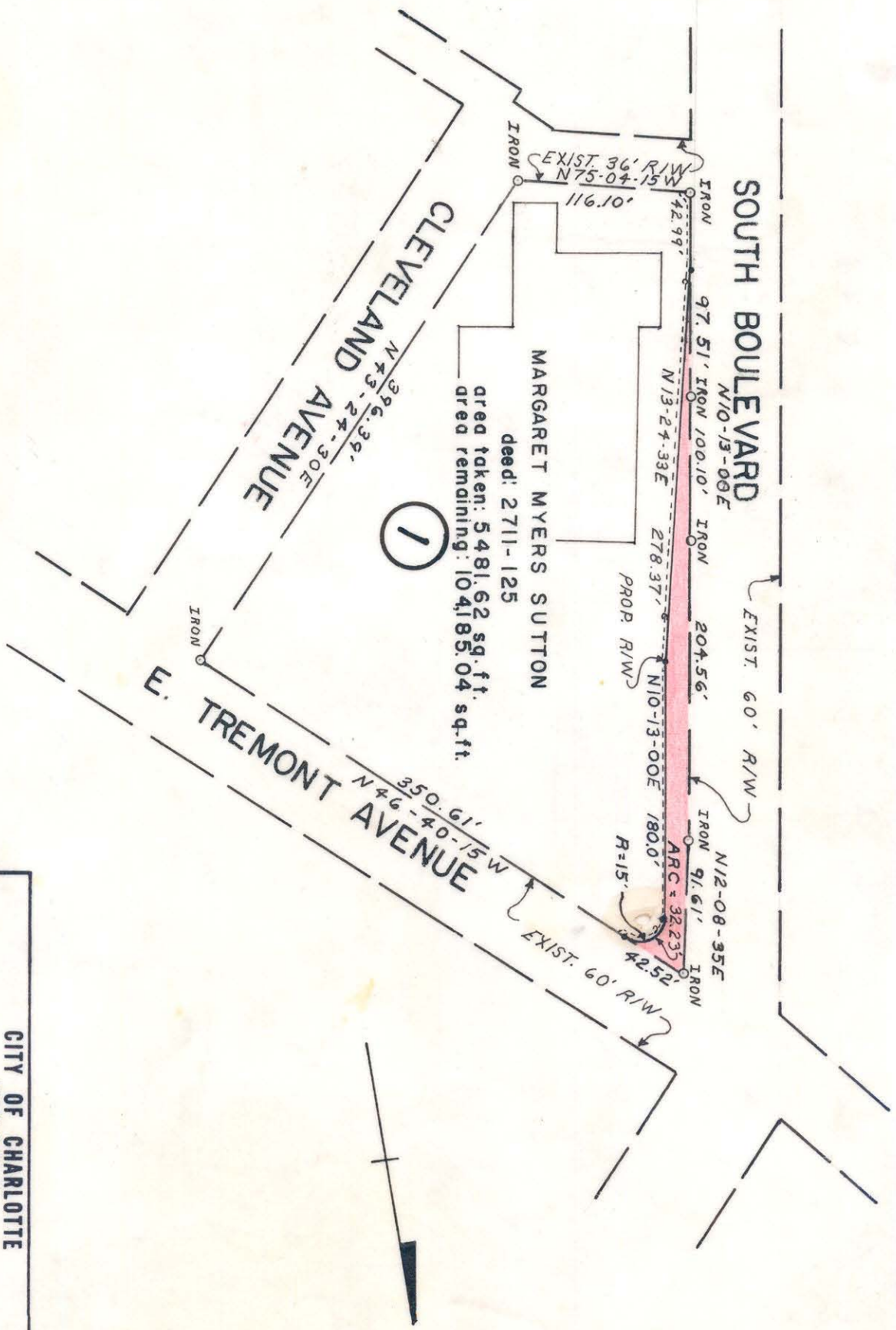
21-K-7-A

21-K-7-C

NOTE: Property corners shown circled were located by actual survey. Bearings are based on North Carolina Coordinate System

This plat was prepared under my supervision
C. D. Redding
 N.C. Reg. Engineer No. 3659

Approved by _____
 R/W Agent



| | |
|--|--|
| CITY OF CHARLOTTE NORTH CAROLINA ENGINEERING DEPARTMENT | |
| REVISIONS | SOUTH BOULEVARD TREMONT AVE. INTERSECTION |
| DRAWN BY <i>LYMCH</i> CHECKED BY <i>CDR</i> CITY ENGINEER | JOB NO. 512-65 FILE NO. 115 SHEET 1 OF 1 |
| DATE 11-22-66 SCALE 1" = 100' | 121-000-01/121066-99 |