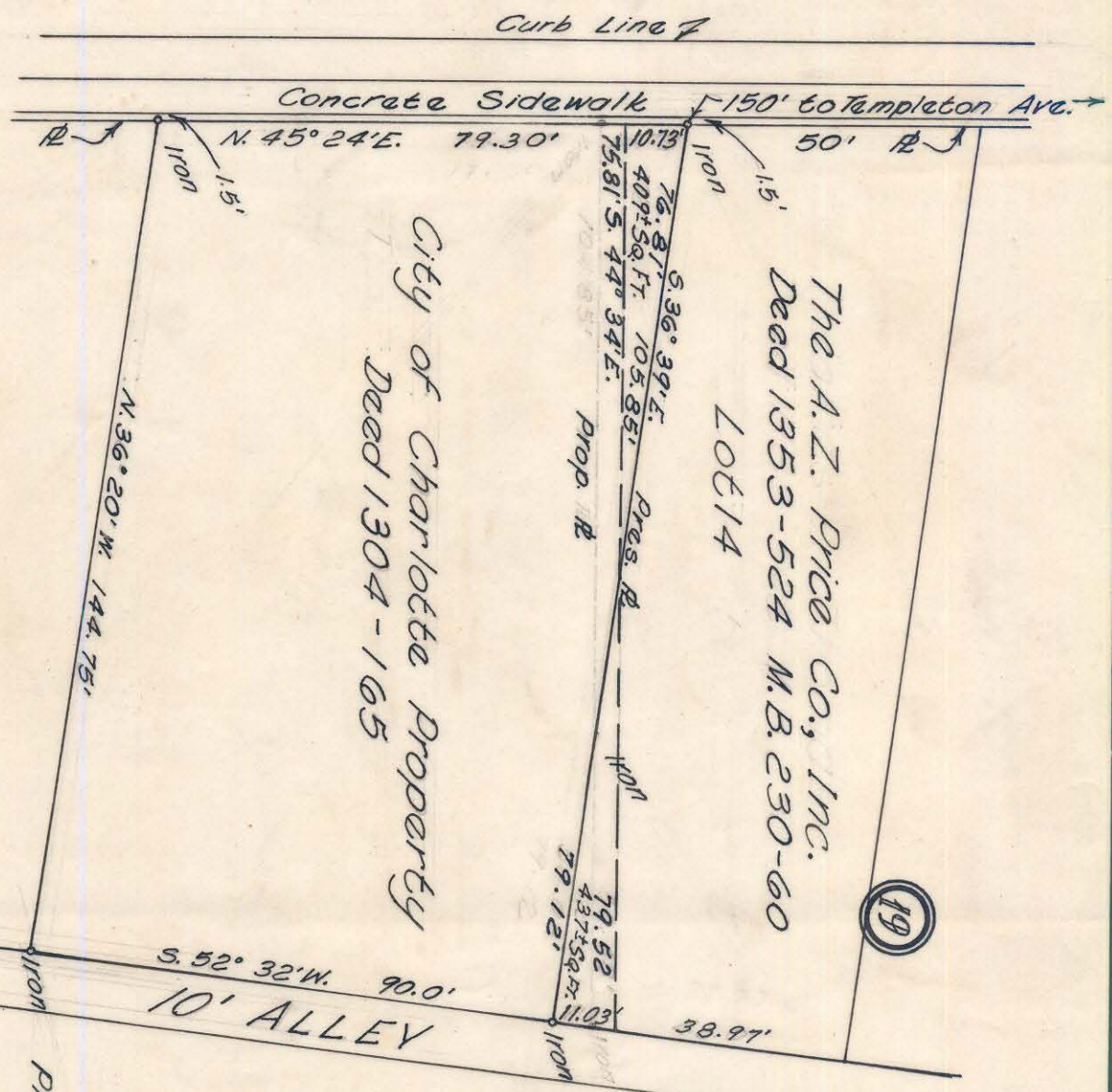


Concrete Sidewalk
Curb Line

SOUTH BOULEVARD



MAD SHOWING
PROPERTY TO BE TRANSFERRED
BY THE
CITY OF CHARLOTTE, N.C.
AND

THE A.Z. PRICE CO. INC.

Scale 1" = 30'
Office of City Engineer
Charlotte, N.C.

123-025-02

