

SOUTH

McDOWELL STREET

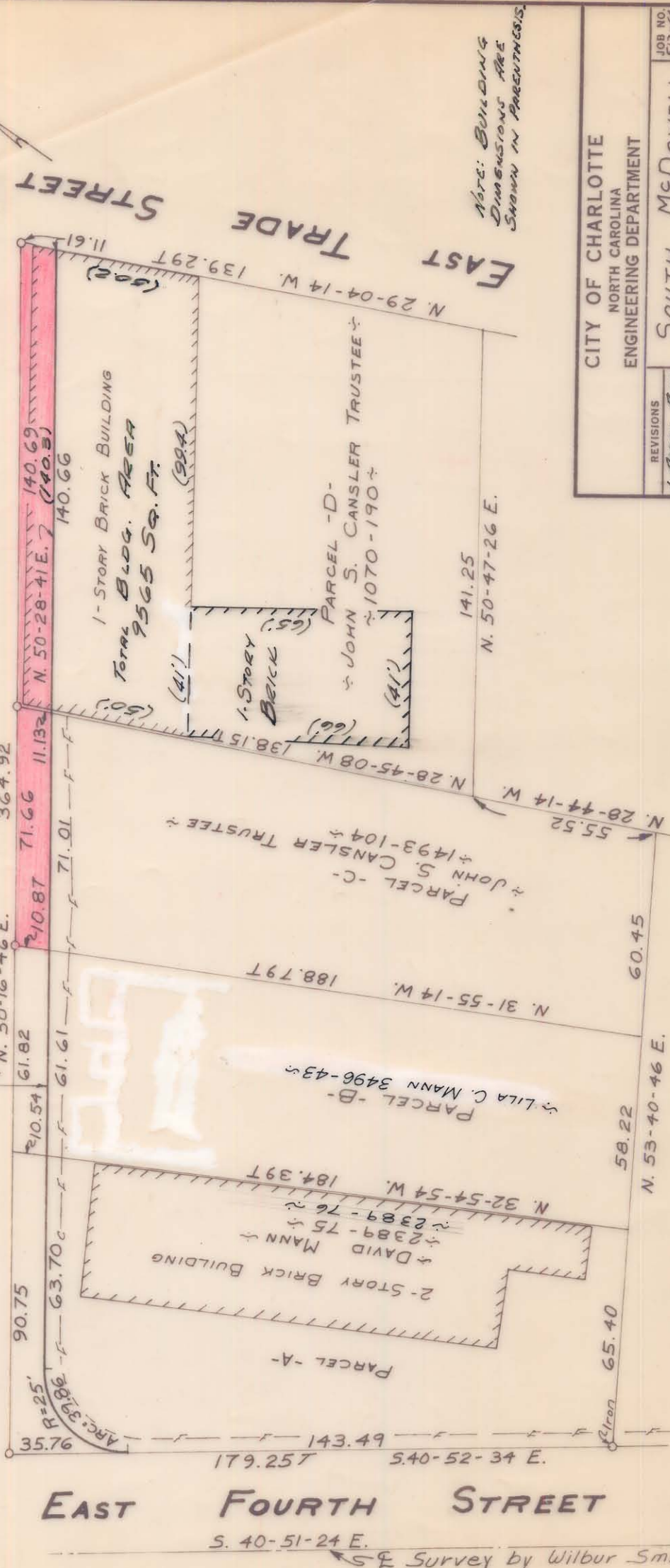
STREET

NOTE: THIS MAP WAS PREPARED FROM A MAP AND SURVEY BY SPYRATT-SEARER, INC. DATED 4 NOVEMBER 1968.

& Survey by Wilbur Smith & Assoc.

Approved by

E/W Agent



NOTE: BUILDING DIMENSIONS ARE SHOWN IN PARENTHESES.

EAST FOURTH STREET

S. 40-51-24 E.

& Survey by Wilbur Smith & Assoc.

	PARCEL - A	PARCEL - B	PARCEL - C	PARCEL - D
TOTAL AREA:	14,150.70 sq. ft.	11,124.19 sq. ft.	12,486.93 sq. ft.	19,223.66 sq. ft.
AREA TAKEN	1,070.00 sq. ft.	652.78 sq. ft.	770.98 sq. ft.	1,571.93 sq. ft.
AREA REMAINING	13,080.70 sq. ft.	10,471.41 sq. ft.	11,715.95 sq. ft.	17,651.73 sq. ft.

CITY OF CHARLOTTE
NORTH CAROLINA
ENGINEERING DEPARTMENT

SOUTH McDOWELL STREET

PROPERTY OF
JOHN S. CANISLER TRUSTEE

DATE APRIL 11, 1969 SCALE 1" = 40'

REVISIONS
1. Added Block Parcel D with dimensions of sq. ft. 11-14-69 JTT
DRAWN BY J.B.C.
CHECKED BY JTT
BY CDP CITY ENGINEER

JOB NO. 573-64
FILE NO. 303
SHEET 3 OF 3