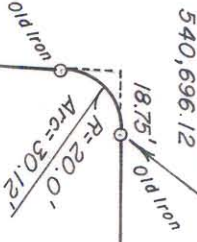


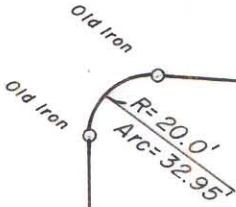
~ City of Charlotte ~

# S. DAVIDSON STREET

X=1,450,689.92  
Y=540,696.12



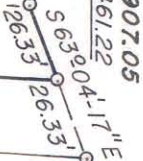
N 50° 56' 14" E  
307.10'



# E. FOURTH STREET

S 42° 44' 57" E  
319.88'

X=1,450,907.05  
Y=540,461.22



TAX CODE 125-026-01

CITY OF CHARLOTTE

2.876 Ac.

# E. THIRD STREET

M 41° 14' W  
18.82'

M 38° 59' 24" N  
24.80'

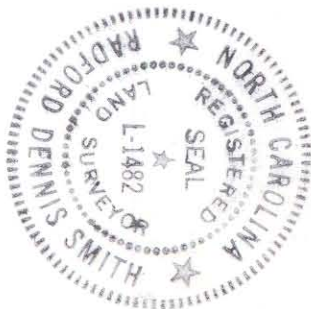
Former R/W Alexander St.

New Boundary Line  
Old Alexander Street  
S 50° 35' 03" W  
352.08'

~ Mecklenburg County ~

N.C. Grid

This plat was prepared under my supervision R. Dennis Smith  
N. C. Reg. Surveyor No. L-1482



**CHARLOTTE**  
ENGINEERING DEPARTMENT

REVISIONS

Boundary Survey  
City/County Governmental Center

E. FOURTH STREET

S. DAVIDSON ST. - S. ALEXANDER ST.

DRAWN BY R.R.W.  
CHECKED BY R.O.S.  
R. O. S.  
CITY ENGINEER

DATE Aug. 2, 1985

SCALE 1" = 60'

JOB NO.	
FILE NO.	
SHEET	1
OF	1

FILE: 125-26-01