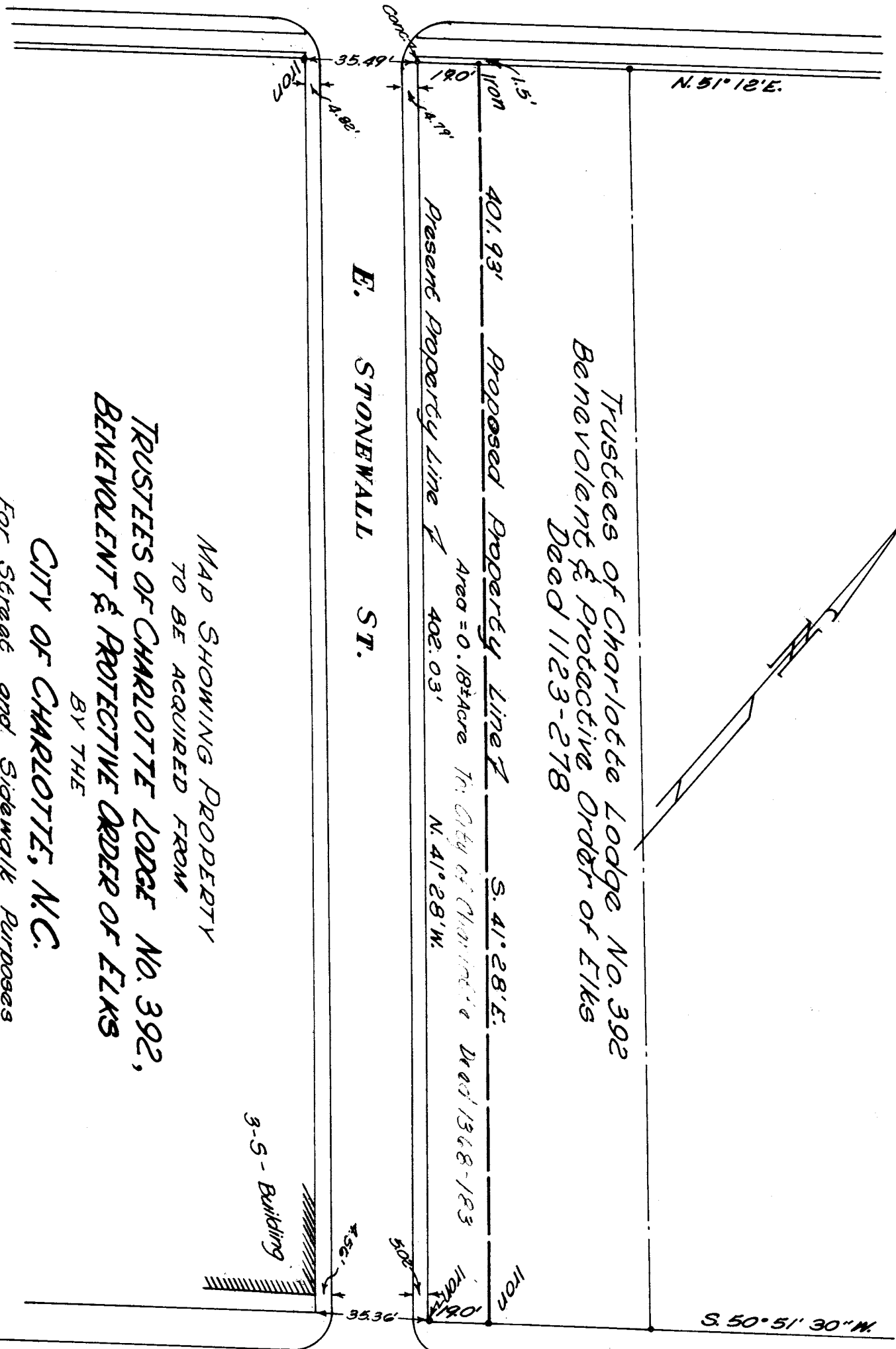


S. TRYON ST.



Trustees of Charlotte Lodge No. 392
 Benevolent & Protective Order of Elks
 Deed 1123-278

Proposed Property Line $\overline{S. 41^{\circ} 28' E.}$
 Present Property Line $\overline{N. 41^{\circ} 28' W.}$
 Area = 0.184 Acre To City of Charlotte Deed 1368-183

E. STONEWALL ST.

MAP SHOWING PROPERTY
 TO BE ACQUIRED FROM
 TRUSTEES OF CHARLOTTE LODGE NO. 392,
 BENEVOLENT & PROTECTIVE ORDER OF ELKS
 BY THE

CITY OF CHARLOTTE, N.C.

For Street and Sidewalk Purposes
 Scale 1" = 40'
 Office of City Engineer
 Charlotte, N.C.
 April 5, 1949

S COLLEGE ST.