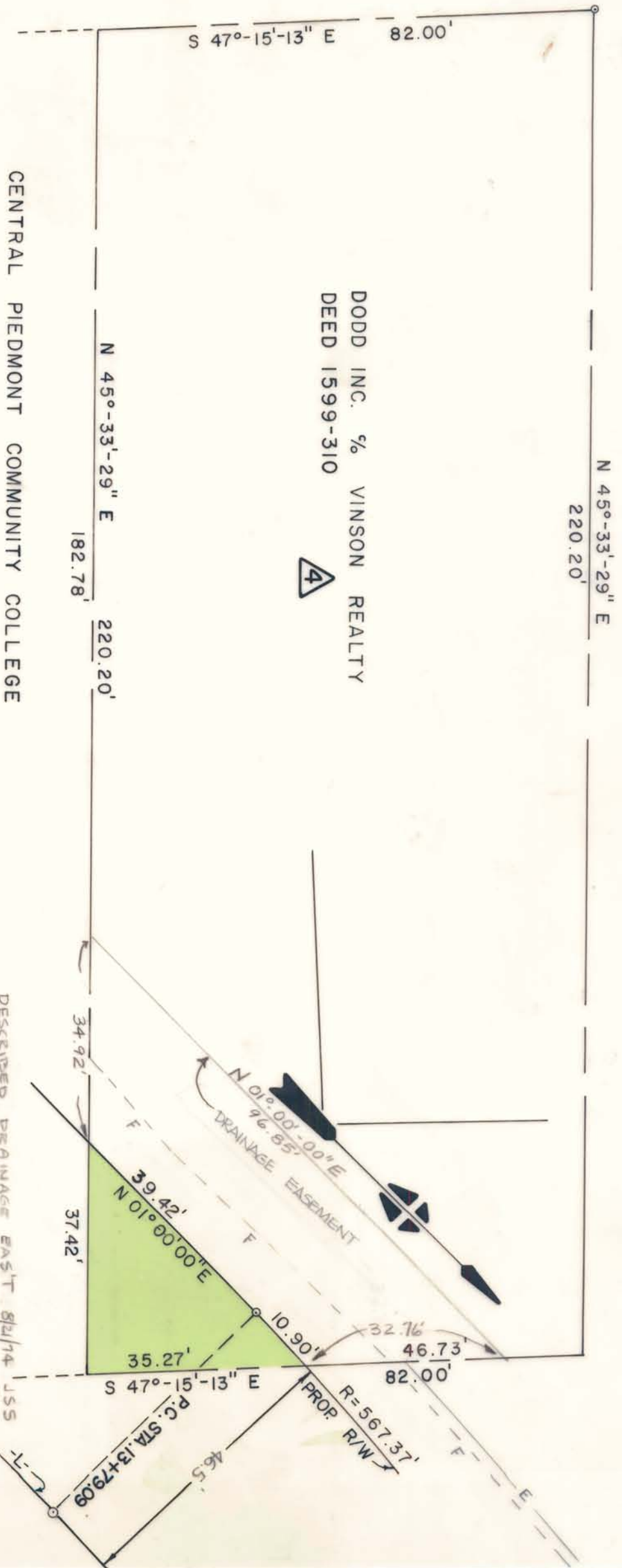


FOURTH STREET



DODD INC. % VINSON REALTY
DEED 1599-310



CENTRAL PIEDMONT COMMUNITY COLLEGE

TOTAL AREA	18,034.67	sq. ft.	.414	d.c.
AREA TAKEN	665.61	sq. ft.	.015	d.c.
AREA REMAINING	17,369.06	sq. ft.	.399	d.c.

NOTE: PROPERTY CORNERS SHOWN CIRCLED WERE LOCATED BY ACTUAL SURVEY. BEARINGS ARE BASED ON NORTH CAROLINA COORDINATE SYSTEM.

THIS PLAT WAS PREPARED UNDER MY SUPERVISION.

Stephen A. Bilbost P.E.
N.C. REG. ENGINEER NO. 6233

DESCRIBED DRAINAGE EAST 8/24/74 JSS REVISED 7-25-74 SAG.	
RALPH WHITEHEAD & ASSOCIATES CONSULTING ENGINEERS	CHARLOTTE, N.C.
CITY OF CHARLOTTE PROJECT NO. 513-67-132 PROPOSED R/W	
KINGS DRIVE RELOCATION PROPERTY OF	
DODD INC. % VINSON REALTY	
DRAWN BY W.N.C.	DATE 5-6-74 DWG. NO.
CHECKED BY J.W.C., SAG.	DATE 5-6-74 1202.58-P
SCALE 1" = 20'	SHEET 4 OF 21

RW/85

125-95-01