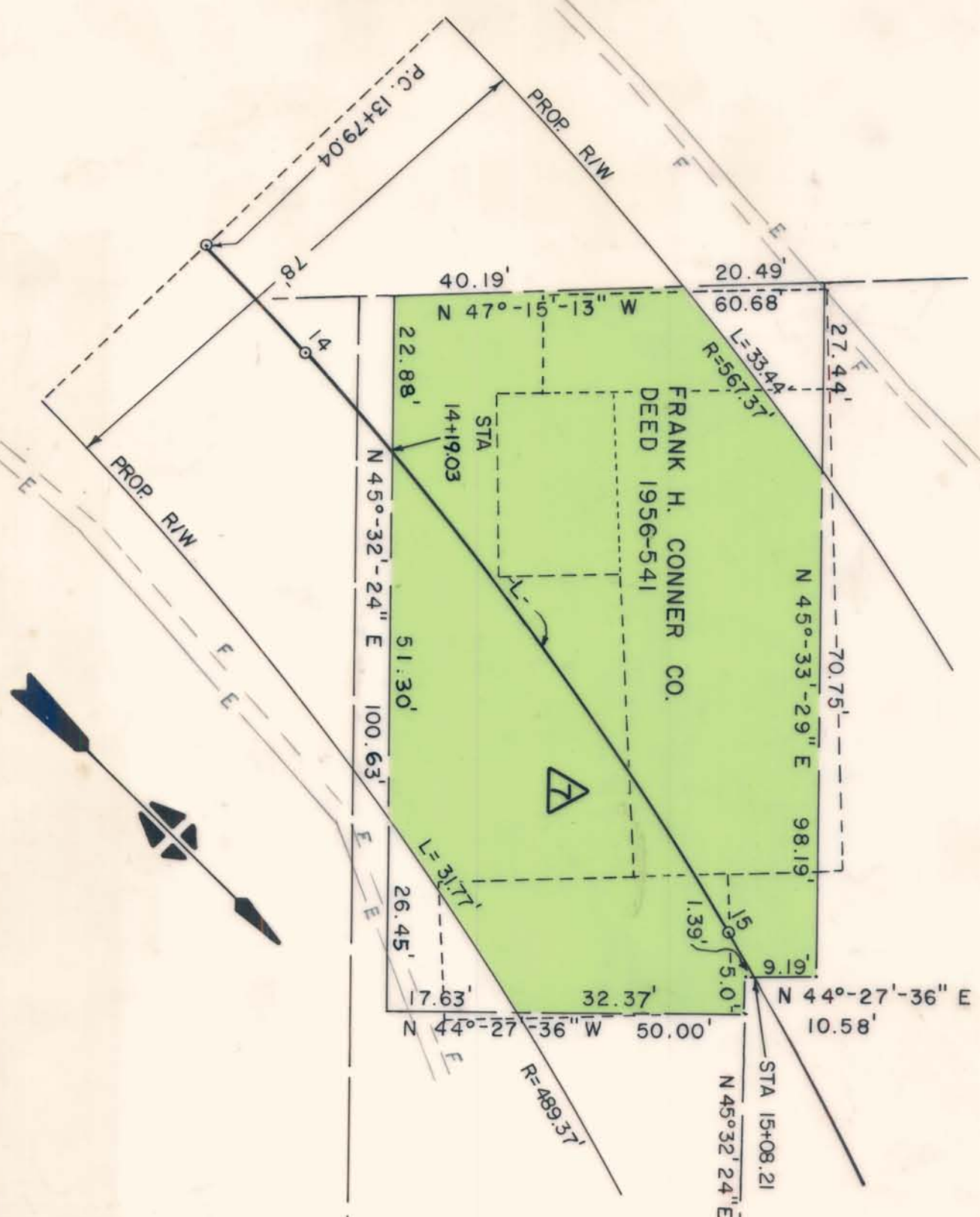


TOTAL AREA	AREA TAKEN	AREA REMAINING	LEFT	RIGHT	sq. ft.	sq. ft.	sq. ft.	sq. ft.	sq. ft.	dc.	dc.	dc.	dc.
	6109.96	5595.89	275.67	238.40						.140	.129	.006	.005

NOTE: PROPERTY CORNERS SHOWN CIRCLED WERE LOCATED BY ACTUAL SURVEY. BEARINGS ARE BASED ON NORTH CAROLINA COORDINATE SYSTEM.



CLYDE R. MITCHELL JR.

THIS PLAT WAS PREPARED UNDER MY SUPERVISION.
Stephen A. Gilbert, P.E.
 N.C. REG. ENGINEER NO. 6233

RALPH WHITEHEAD & ASSOCIATES		CONSULTING ENGINEERS		CHARLOTTE, N. C.	
CITY OF CHARLOTTE PROJECT NO. 513-67-132		PROPOSED R/W		KINGS DRIVE RELOCATION	
PROPERTY OF		FRANK H. CONNER CO.		RW 85	
DRAWN BY W.N.C.	DATE 5-6-74	DWG. NO.			
CHECKED BY J.W.C. SAG.	DATE 5-6-74	1202.61-P			
SCALE 1" = 20'	SHEET 7	OF 21			

REVISED 7-25-74 SAG.