

A-7-H-1

JACKSON DR

NEW DIXIE ROAD

TO CHARLOTTE 5 MILES

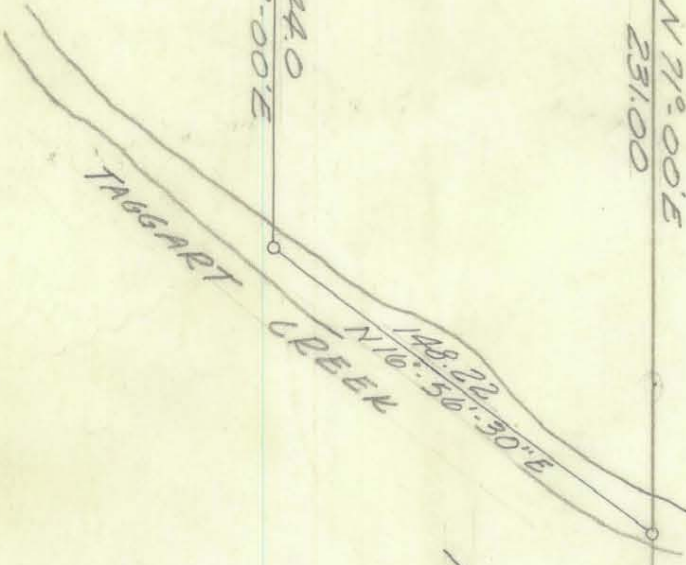
N 71° 00' E  
231.00

297.47

N.E. PROP  
CORNER

N 19° 00' W  
120.0

N 71° 00' E  
144.0



MATTOX PROP.

CITY OF CHARLOTTE

HONORABLE  
ENGINEERING DEPARTMENT

REGULATION TAGGART CREEK  
PUMPING STATION  
SITE

DATE: 10/26/59 SCALE: 1" = 60'

DRAWN BY: H.C. CITY ENGINEER K.C. CHAMBERS

1060 # 02

110-000 143-091-03

A-7-H-1

A-7-H-1