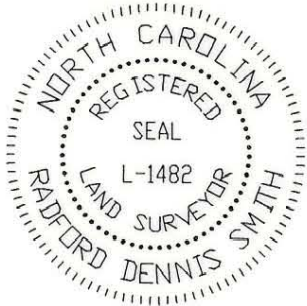


THIS PLAT WAS PREPARED UNDER MY SUPERVISION

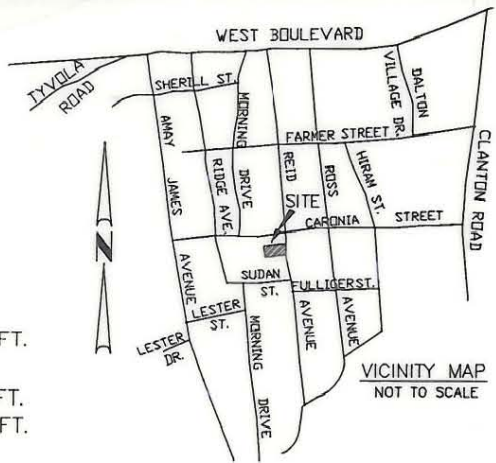
R. Dennis Smith 6/2/93

N.C. REG. LAND SURVEYOR NO. L-1482



NOTES

- 1) BEARINGS AND DISTANCES SHOWN IN PARENTHESES ARE BASED ON DEED INFORMATION.
- 2) BROKEN LINES INDICATE PROPERTY NOT SURVEYED.
- 3) TOTAL AREA BY DEED 6,500 SQ. FT.
- 4) AREA OF PERMANENT UTILITY EASEMENT 4 SQ. FT.
- 5) AREA REMAINING: 6,496 SQ. FT.
- 6) AREA OF TEMPORARY CONSTRUCTION EASEMENT 397 SQ. FT.



VICINITY MAP NOT TO SCALE

REID PARK ASSOCIATES
TAX CODE 145-186-06
L 33-43 BLK 7 M6-112
DB 6426 PG 690

WESTERN PROPERTIES INC.
TAX CODE 145-186-09
L 26 BLK 7 M5-371
DB 2779 PG 133

CARONIA ST.

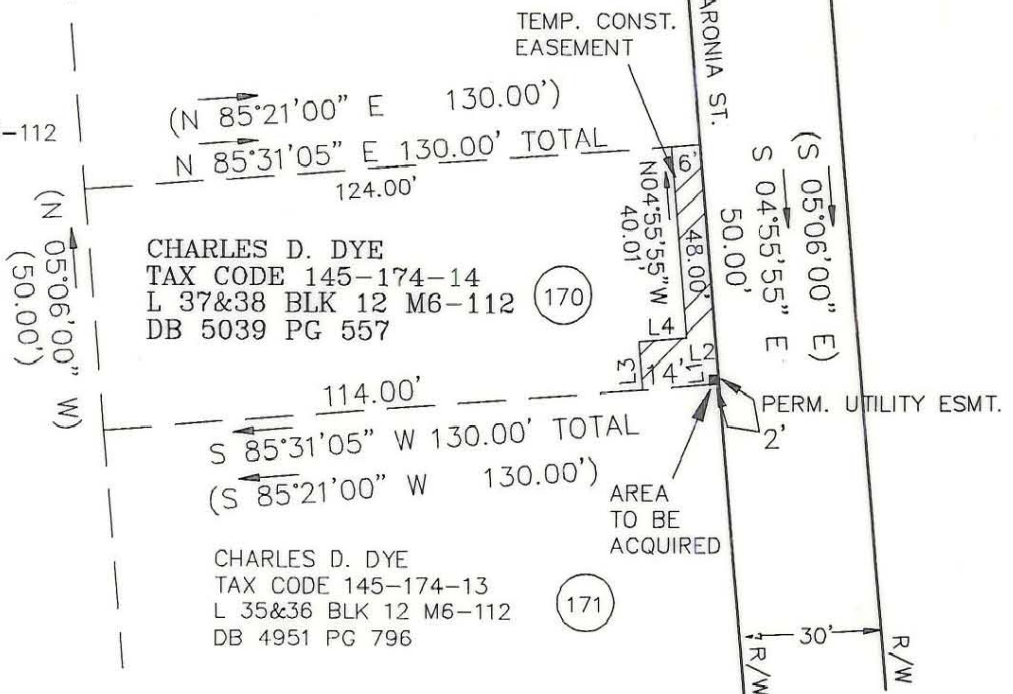
REID AVENUE

ELBERT L. HALSEY, JR.
TAX CODE 145-174-15
L 39-41 BLK 12 M6-112
DB 6306 PG 605

JOE D. WITHROW
TAX CODE 145-174-08
L 17-23 & 42-52 BLK 12 M6-112
DB 4521 PG 827

CHARLES D. DYE
TAX CODE 145-174-14
L 37&38 BLK 12 M6-112
DB 5039 PG 557

CHARLES D. DYE
TAX CODE 145-174-13
L 35&36 BLK 12 M6-112
DB 4951 PG 796



LINE	DIRECTION	DISTANCE
L1	N 04°55'55" W	2.02'
L2	N 85°31'05" E	2.02'
L3	N 04°55'55" W	9.91'
L4	N 85°04'05" E	10.00'

GRAPHIC SCALE



(IN FEET)
1 inch = 40 ft.

LEGEND

○ IRON PIN FOUND

PREPARED BY:
CITY OF CHARLOTTE
ENGINEERING DEPARTMENT
600 EAST FOURTH STREET
CHARLOTTE, NC 28202
704-336-2291

THIS PLAT WAS PREPARED FOR THE PURPOSE OF ACQUISITION ONLY, AND IS NOT INTENDED TO BE A BOUNDARY SURVEY OF THE PROPERTY SHOWN.

		CHARLOTTE ENGINEERING DEPARTMENT	
REVISIONS		REID PARK NEIGHBORHOOD REINVESTMENT	
		PROPERTY OF CHARLES D. DYE	
DRAWN BY CED		CHARLOTTE, MECKLENBURG CO., NC	
CHECKED BY DHS			
SURVEY SUPVR.		DATE 06-02-93	SCALE 1"=40'
		JOB NO. 92076	FILE NO. PAR170
		SHEET 1	OF 1

DB 7426 PG 484

145-174-14