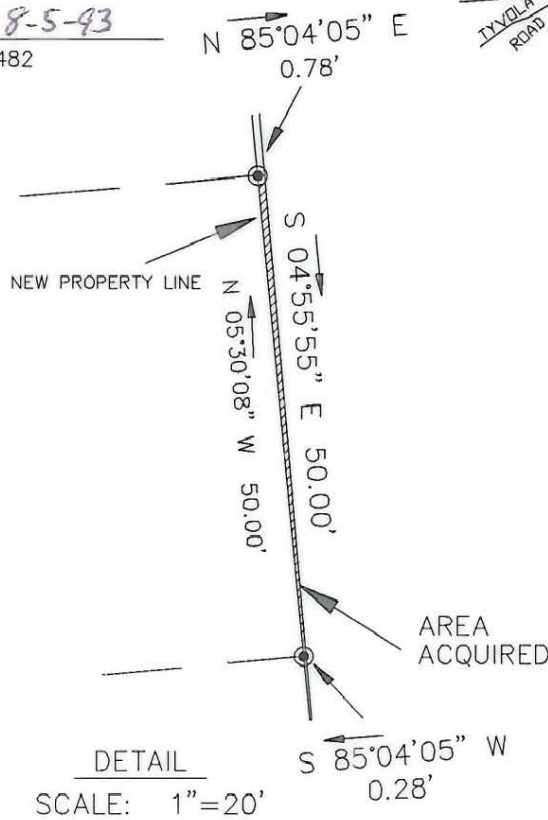
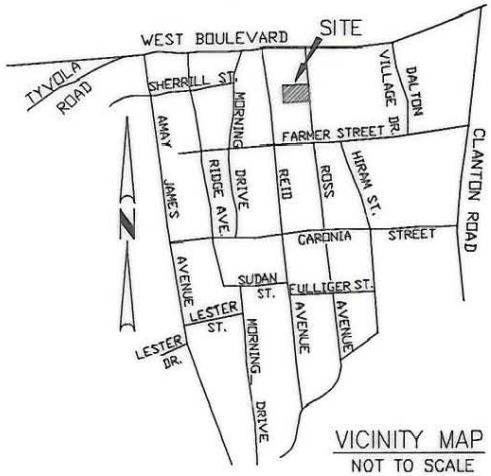
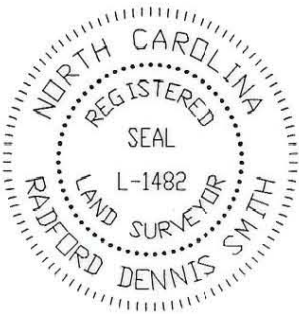


THIS PLAT WAS PREPARED UNDER MY SUPERVISION

R. Dennis Smith 8-5-93

N.C. REG. LAND SURVEYOR NO. L-1482

THIS PLAT WAS PREPARED FOR THE PURPOSE OF ACQUISITION ONLY, AND IS NOT INTENDED TO BE A BOUNDARY SURVEY OF THE PROPERTY SHOWN.



DETAIL
SCALE: 1"=20'

REID PARK ASSOC.
TAX CODE 145-184-04
L 40&41 BLK A M5-163
DB 6629 PG 351

M.F. CROUCH
TAX CODE 145-184-05
L 42&43 BLK A M5-163
DB 1635 PG 289

ST. MATTHEWS HOLINESS CHURCH
TAX CODE 145-184-06
L 44&45 BLK A M5-163
DB 1386 PG 246

MARVIN L. WOODS
TAX CODE 145-184-07
L 46&47 BLK A M5-163
DB 3796 PG 143

MARVIN L. WOODS
TAX CODE 145-184-08
L 48&49 BLK A M5-163
DB 1654 PG 502

MAMIE S. GRIER
TAX CODE 145-184-24
L 15&16 BLK A M5-163
DB 1250 PG 180

FRED M. HEATH
TAX CODE 145-184-23
L 17&18 BLK A M5-163
DB 5566 PG 966

MILAS McCLAIN
TAX CODE 145-184-22
L 19&20 BLK A M5-163
DB 2220 PG 110

RUTH N. CALDWELL
TAX CODE 145-184-21
L 21&22 BLK A M5-163

GATHINGS MOTOR CO., INC.
TAX CODE 145-184-20
L 23-25 BLK A M5-163
DB 3327 PG 585

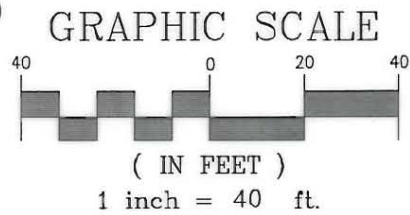


NOTES

- 1) BEARINGS AND DISTANCES SHOWN IN PARENTHESES ARE BASED ON DEED INFORMATION.
- 2) BROKEN LINES INDICATE PROPERTY NOT SURVEYED.
- 3) TOTAL AREA BY DEED 7,500 SQ. FT.
- 4) AREA ACQUIRED: 26 SQ. FT.
- 5) AREA REMAINING: 7,474 SQ. FT.
- 6) AREA OF TEMPORARY CONSTRUCTION EASEMENT 324 SQ. FT.

PREPARED BY:
CITY OF CHARLOTTE
ENGINEERING DEPARTMENT
600 EAST FOURTH STREET
CHARLOTTE, NC 28202
704-336-2291

- LEGEND
- IRON PIN FOUND
 - IRON SET



CHARLOTTE ENGINEERING DEPARTMENT		
REVISIONS	REID PARK NEIGHBORHOOD REINVESTMENT PROPERTY OF MILAS McCLAIN CHARLOTTE, MECKLENBURG CO., NC	JOB NO. 92076
		FILE NO. PAR51A
DRAWN BY CED		SHEET 1
CHECKED BY DHS		OF 1
SURVEY SUPVR. <i>RDS</i>		DATE 07-13-93

DB 7465 PG 47

145-184-22