

THIS PLAT WAS PREPARED UNDER MY SUPERVISION
L. Dennis Smith 6-17-93
 N.C. REG. LAND SURVEYOR NO. L-1482

RUTH D. TAYLOR
 TAX CODE 145-184-14
 L 62-63 BLK A MAP5-163
 DB 2668 PG 2

JOHNNIE G. BERRY
 TAX CODE 145-184-15
 L 36&P37 BLK D MAP5-163
 DB 4157 PG 139
 DB 4232 PG 439

JAMES L. PEARSON
 TAX CODE 145-184-16
 L 34-35 BLK A MAP5-163
 DB 3687 PG 250

MAGGIE LEE BROWN
 TAX CODE 145-123-12
 L 28-30 BLK B MAP5-163
 DB 1567 PG 321

ARLETHA HINES
 TAX CODE 145-123-13
 P 31-33 BLK B MAP5-163
 DB 2804 PG 279
 DB 4232 PG 430

C.D. HARRIS
 TAX CODE 145-185-01
 L 1&2 BLK E MAP5-163
 DB 5294 PG 645

C.D. HARRIS
 TAX CODE 145-185-02
 L 3&4 BLK E MAP5-163
 DB 5409 PG 289

ROBERT HARRIS
 TAX CODE 145-185-23
 P 61-62 B E MAP5-163
 DB 4129 PG 240

DAVID E. RAY, SR.
 TAX CODE 145-122-05
 L 8&9 BLK C MAP5-163
 DB 6357 PG 550

B.D. WILLIAMS
 CHARLES L. GREEN
 TAX CODE 145-185-24
 L 63&P64 BLK E MAP5-163
 DB 4485 PG 739
 DB 4232 PG 442

GW. GATES
 TAX CODE 145-122-04
 P 5-7 BLK C MAP5-163
 DB 3917 PG 408
 DB 4232 PG 436

ROSS AVENUE

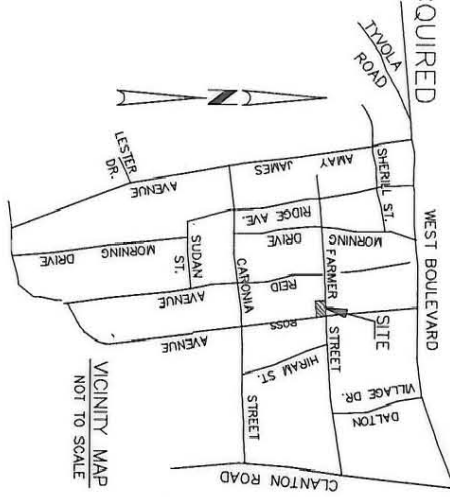
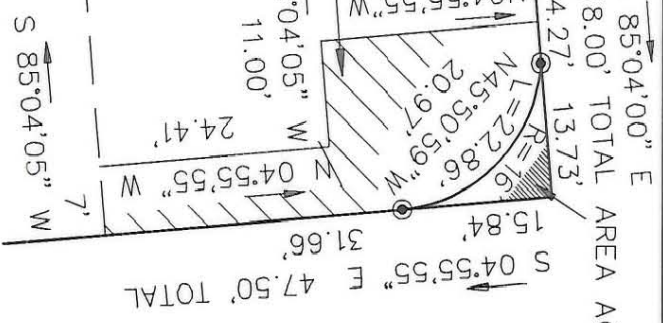
FARMER STREET

NEW PROPERTY LINE

SEE DETAIL

SCALE: 1" = 20'

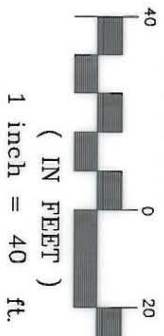
DETAIL



NOTES

- 1) BEARINGS AND DISTANCES SHOWN IN PARENTHESES ARE BASED ON DEED INFORMATION.
- 2) BROKEN LINES INDICATE PROPERTY NOT SURVEYED.
- 3) TOTAL AREA BY DEED 7,125 SQ.FT.
- 4) AREA ACQUIRED: 53 SQ.FT.
- 5) AREA REMAINING: 7,072 SQ.FT.
- 6) AREA OF TEMP. CONSTRUCTION EASEMENT: 534 SQ.FT.

GRAPHIC SCALE



LEGEND
 ○ IRON PIN FOUND
 ⊙ IRON PIN SET

THIS PLAT WAS PREPARED FOR THE PURPOSE OF ACQUISITION ONLY, AND IS NOT INTENDED TO BE A BOUNDARY SURVEY OF PROPERTY SHOWN.

PREPARED BY:
 CITY OF CHARLOTTE
 ENGINEERING DEPARTMENT
 600 EAST FOURTH STREET
 CHARLOTTE, NC 28202
 704-336-2291

		CHARLOTTE ENGINEERING DEPARTMENT	
		REVISIONS	
DRAWN BY CED		B.D. WILLIAMS & CHARLES L. GREEN	
CHECKED BY DHS		CHARLOTTE, MECKLENBURG CO., NC	
SURVEY SUPV.		DATE 06-14-93	SCALE 1" = 40'
PROPERTY OF	FILE NO.	JOB NO.	SHEET
REID PARK NEIGHBORHOOD REINVESTMENT	PAR59	92076	1
			OF
			1

DB 7465 PG 80 145-185-24