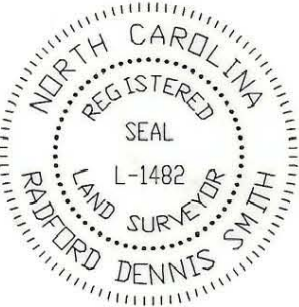


THIS PLAT WAS PREPARED UNDER MY SUPERVISION

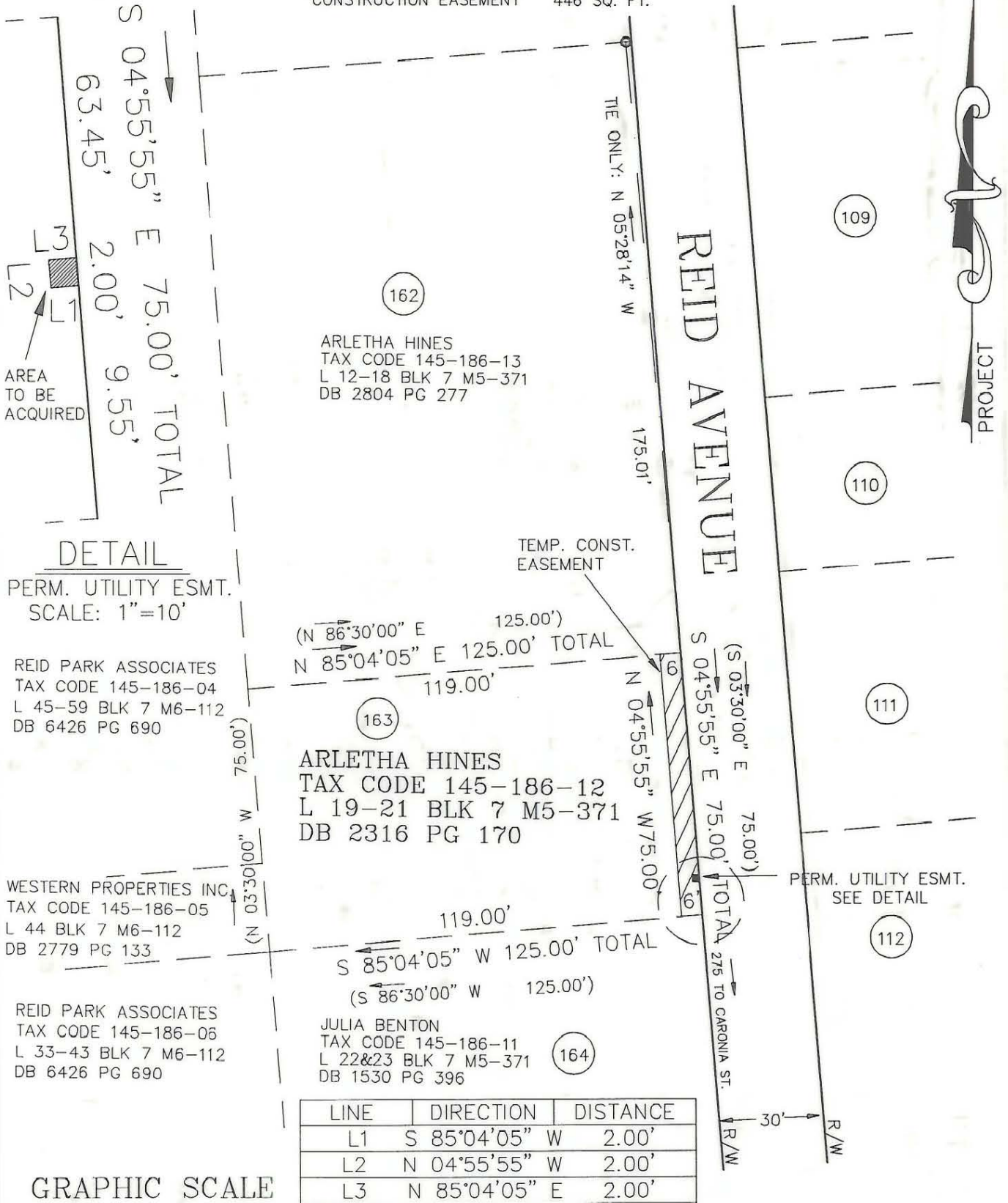
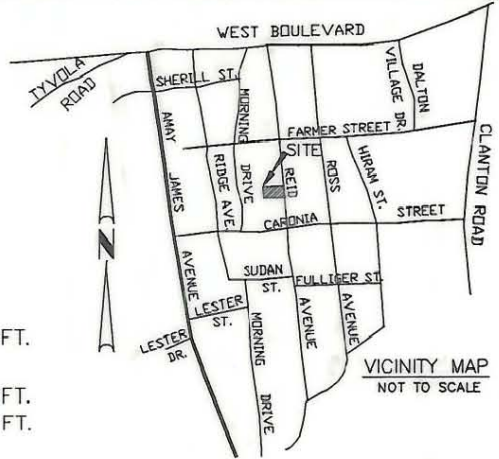
R. Dennis Smith 6/2/93

N.C. REG. LAND SURVEYOR NO. L-1482



NOTES

- 1) BEARINGS AND DISTANCES SHOWN IN PARENTHESES ARE BASED ON DEED INFORMATION.
- 2) BROKEN LINES INDICATE PROPERTY NOT SURVEYED.
- 3) TOTAL AREA BY DEED 9,375 SQ. FT.
- 4) AREA OF PERMANENT UTILITY EASEMENT 4 SQ. FT.
- 5) AREA REMAINING: 9,371 SQ. FT.
- 6) AREA OF TEMPORARY CONSTRUCTION EASEMENT 446 SQ. FT.



DETAIL
 PERM. UTILITY ESMT.
 SCALE: 1"=10'

REID PARK ASSOCIATES
 TAX CODE 145-186-04
 L 45-59 BLK 7 M6-112
 DB 6426 PG 690

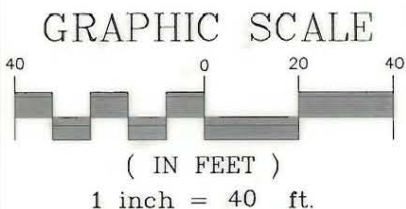
WESTERN PROPERTIES INC.
 TAX CODE 145-186-05
 L 44 BLK 7 M6-112
 DB 2779 PG 133

REID PARK ASSOCIATES
 TAX CODE 145-186-08
 L 33-43 BLK 7 M6-112
 DB 6426 PG 690

ARLETHA HINES
 TAX CODE 145-186-13
 L 12-18 BLK 7 M5-371
 DB 2804 PG 277

ARLETHA HINES
 TAX CODE 145-186-12
 L 19-21 BLK 7 M5-371
 DB 2316 PG 170

JULIA BENTON
 TAX CODE 145-186-11
 L 22&23 BLK 7 M5-371
 DB 1530 PG 396




LEGEND

○ IRON PIN FOUND

PREPARED BY:
 CITY OF CHARLOTTE
 ENGINEERING DEPARTMENT
 600 EAST FOURTH STREET
 CHARLOTTE, NC 28202
 704-336-2291

THIS PLAT WAS PREPARED FOR THE PURPOSE OF ACQUISITION ONLY, AND IS NOT INTENDED TO BE A BOUNDARY SURVEY OF THE PROPERTY SHOWN.

		CHARLOTTE	
ENGINEERING DEPARTMENT		JOB NO. 92076	
REID PARK NEIGHBORHOOD REINVESTMENT		FILE NO. PAR163	
PROPERTY OF ARLETHA HINES		SHEET 1	
CHARLOTTE, MECKLENBURG CO., NC		OF 1	
REVISIONS	DRAWN BY CED	DATE 06-02-93	SCALE 1"=40'
	CHECKED BY DHS		
	SURVEY SUPVR. <i>RDS</i>		

145-186-12