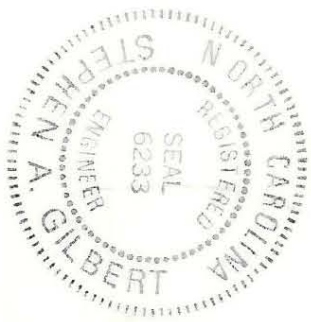
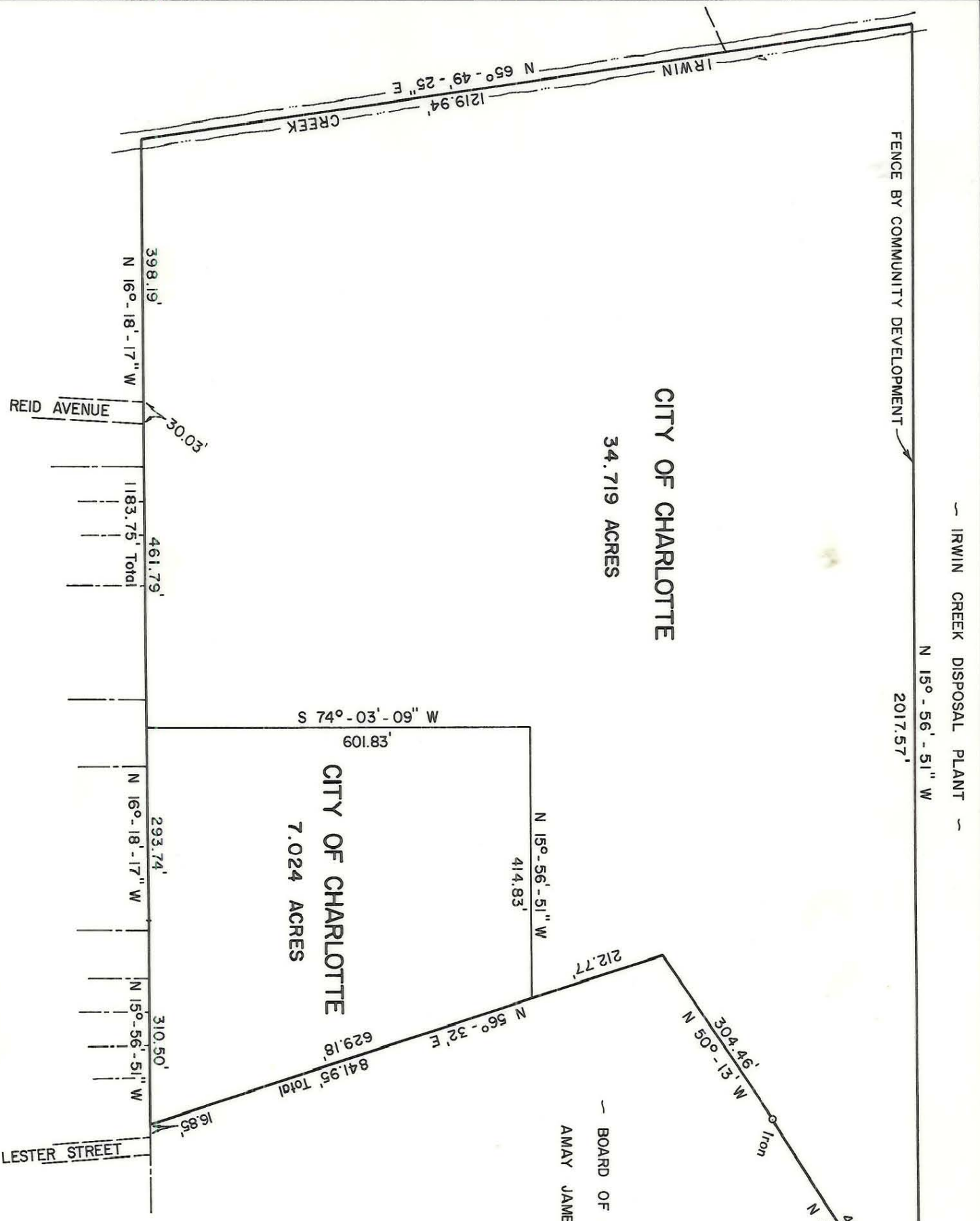


IRWIN CREEK DISPOSAL PLANT
 N 15° - 56' - 51" W
 2017.57'

CITY OF CHARLOTTE
 34.719 ACRES

CITY OF CHARLOTTE
 7.024 ACRES

BOARD OF EDUCATION
 AMAY JAMES SCHOOL



NOTE: Property corners shown circled were located by actual survey. Bearings are based on DEED 2147-084

This plat was prepared under my supervision
Stephen A. Gilbert
 H.C. Reg. Engineer No. 6233

CITY OF CHARLOTTE NORTH CAROLINA DEPARTMENT OF PUBLIC WORKS ENGINEERING DIVISION		BOUNDARY MAP WEST BLVD. AREA COMMUNITY DEVELOPMENT PROJECT		JOB NO. 1115
REVISIONS	DRAWN BY HST	PROPERTY OF CITY OF CHARLOTTE	FILE NO. 151	SHEET 1
CHECKED BY K	CITY ENGINEER	DATE MAR., 1976	SCALE 1" = 200'	OF

145-311-00104