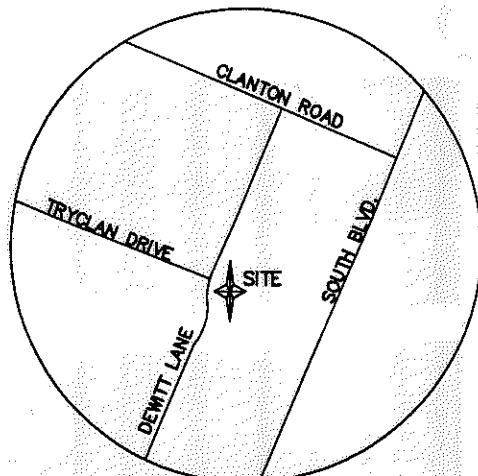
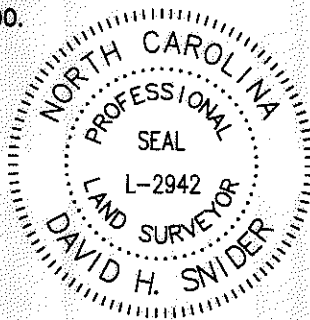


I, DAVID H. SNIDER, CERTIFY THAT THIS PLAT WAS PREPARED UNDER MY SUPERVISION FROM AN ACTUAL FIELD SURVEY UNDER MY SUPERVISION. THAT THE DEEDS AND PLATS NOTED WERE USED AS REFERENCES. THAT THE BOUNDARIES NOT SURVEYED ARE CLEARLY INDICATED AS DRAWN FROM INFORMATION INDICATED. THAT THE RATIO OF PRECISION AS CALCULATED IS 1:38,000.

*David H. Snider* 8/16/200  
 DAVID H. SNIDER, NC P.L.S. L-2942 DATE



VICINITY MAP  
not to scale

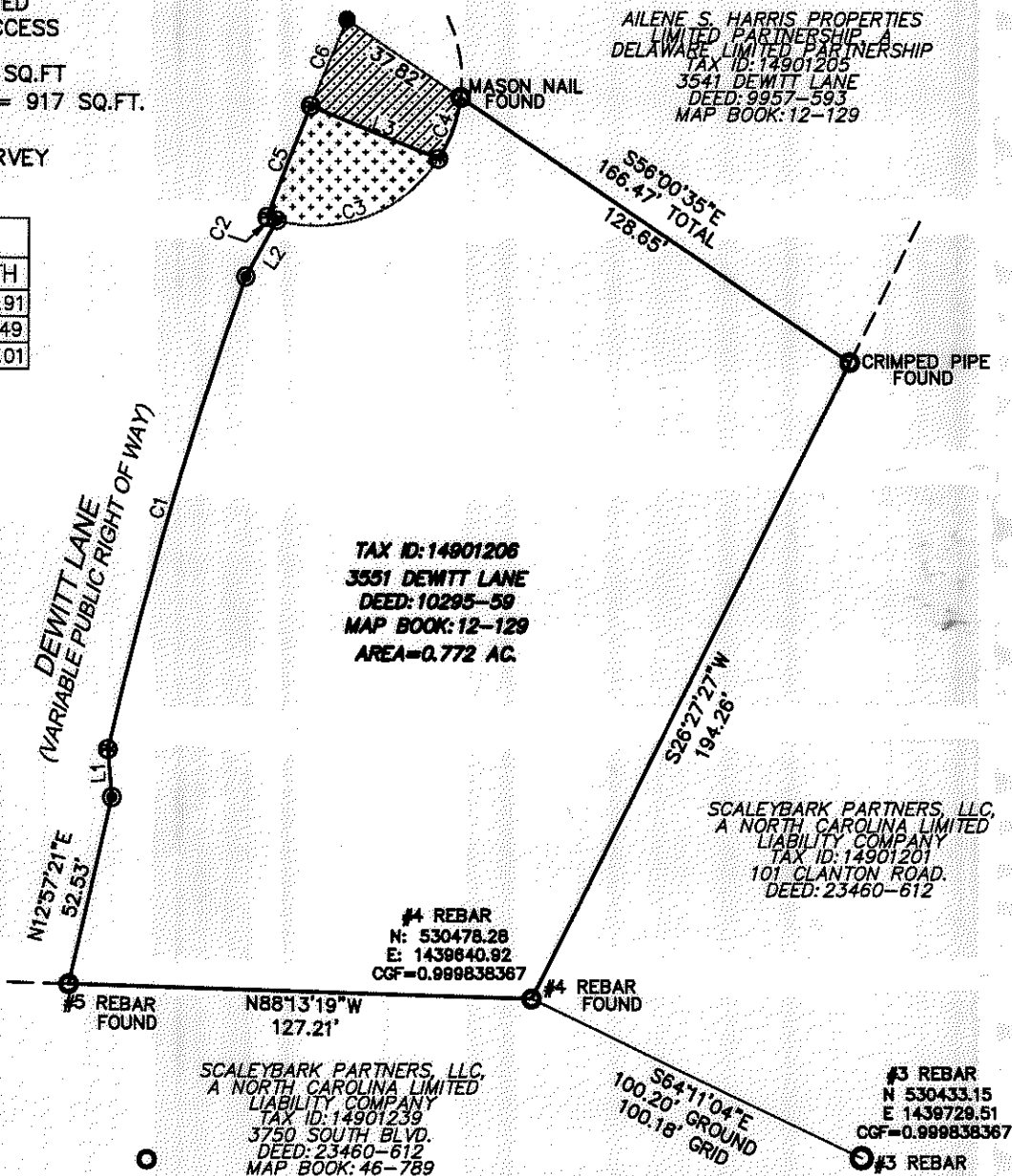
I, \_\_\_\_\_, Review Officer of Mecklenburg County, certify that the map or plat to which this certification is affixed meets all statutory requirements for recording.

Review Officer \_\_\_\_\_ Date \_\_\_\_\_

NOTE:

- 1) REFERENCE RESOLUTION BOOK 39-923 FOR ABANDONED RIGHT OF WAY AND JOINT ACCESS EASEMENT.
- 2) PARCEL AREA = 32,716 SQ.FT
- 3) ABANDONED R\W AREA = 917 SQ.FT.
- 4) CURRENT ZONING IS I-1.
- 5) GRID NORTH BY GPS SURVEY (NAD 83/2001)

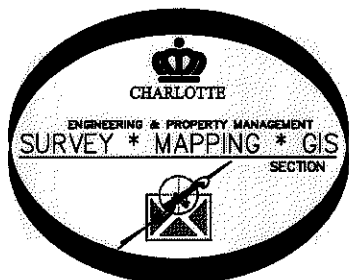
LINE TABLE		
LINE	BEARING	LENGTH
L1	N05°05'36"W	12.91
L2	N29°05'20"E	17.49
L3	S67°45'14"E	38.01



LEGEND

- IRON PIN FOUND ○
- CALCULATED POINT ●
- #5 REBAR SET ●
- PK NAIL SET ●
- ABANDONED RIGHT OF WAY [Dotted Pattern]
- JOINT ACCESS EASEMENT [Hatched Pattern]
- LINES SURVEYED [Solid Line]
- LINES NOT SURVEYED [Dashed Line]

CURVE TABLE					
CURVE	LENGTH	RADIUS	CHORD BRG	CHORD	
C1	134.23	1164.00	N16°13'56"E	134.16	
C2	2.83	40.04	N72°23'05"W	2.82	
C3	50.79	39.94	N69°09'36"E	47.44	
C4	18.07	39.94	N19°45'54"E	17.92	
C5	32.64	1164.00	N21°16'55"E	32.64	
C6	25.60	1164.00	S22°42'55"W	25.60	



PREPARED BY:  
 CITY OF CHARLOTTE  
 ENGINEERING DEPARTMENT  
 600 EAST FOURTH STREET  
 CHARLOTTE, NC 28208  
 704-336-2291

CHARLOTTE ENGINEERING DEPARTMENT		
REVISIONS	<b>BOUNDARY SURVEY OF TAX PARCEL #149-012-06</b>	JOB NO. 871-04-7001
		FILE NO. 149-012-06
SCALE 1"=50'	CHARLOTTE, MECKLENBURG CO., NC	SHEET 1
DRAWN BY JEH		OF 1
DATE:	CHECKED BY JB	SURVEY SUPR. <i>DHS</i>
P:\acadproj\Surproj\BOUNDARY\Cityprop\DEWITT\3551\PLAT.dwg		