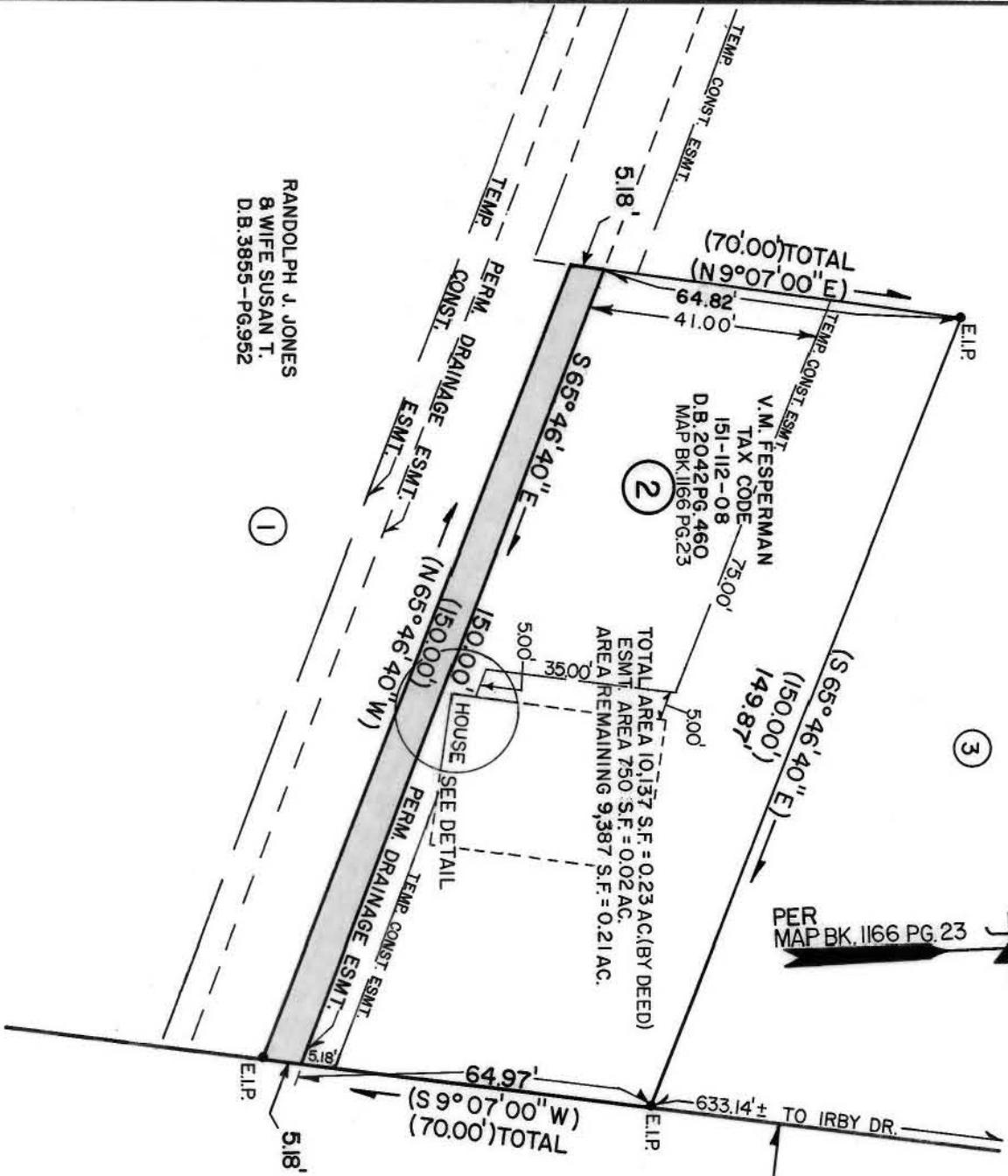


LOUISE V. WHEATLEY
D.B. 1468-PG. 341

V.M. FESPERMAN
TAX CODE
151-112-08
D.B. 2042 PG. 460
MAP BK. 1166 PG. 23

RANDOLPH J. JONES
& WIFE SUSAN T.
D.B. 3855-PG. 952



3

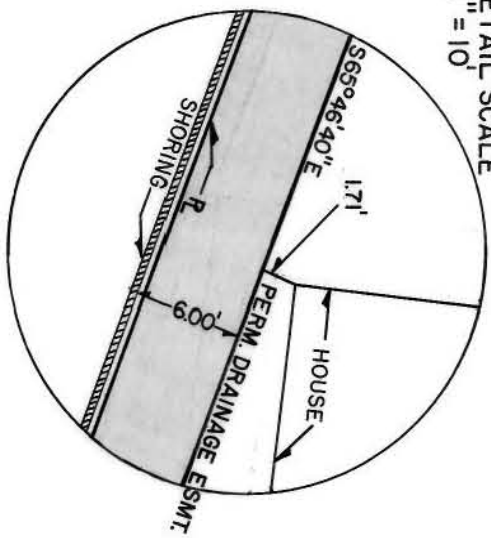
1

2

PER
MAP BK. 1166 PG. 23



DETAIL SCALE
1" = 10'



THIS MAP WAS PREPARED FOR THE PURPOSE OF RIGHT OF WAY OR EASEMENT ACQUISITION ONLY, AND IS NOT INTENDED TO BE A BOUNDARY SURVEY OF THE PROPERTY SHOWN.

NOTE: PROPERTY CORNERS SHOWN CIRCLED WERE LOCATED BY ACTUAL SURVEY. BEARINGS AND DISTANCES SHOWN IN PARENTHESES ARE BASED ON DEED INFORMATION.

THIS PLAT WAS PREPARED UNDER MY SUPERVISION. *R. Dennis Smith*
N.C. REG. SURVEYOR NO. 1482
THIS PLAT DOES NOT MEET THE RECORDATION STANDARDS OF G.S. 47-30

CHARLOTTE
ENGINEERING DEPARTMENT

PROPOSED DRAINAGE IMPROVEMENT & PERMANENT DRAINAGE ESMT. BY CITY OF CHARLOTTE

PROPERTY OF VIRGINIA M. FESPERMAN

R/W 50'
RIDGEWOOD AVE.

WESTFIELD ROAD

633.14'± TO IRBY DR.
R/W 50'

HOUSE
SEE DETAIL

TOTAL AREA 10,137 S.F. = 0.23 AC. (BY DEED)
ESMT. AREA 750 S.F. = 0.02 AC.
AREA REMAINING 9,387 S.F. = 0.21 AC.

PERM. DRAINAGE ESMT.
TEMP. CONST. ESMT.

PERM. DRAINAGE ESMT.
TEMP. CONST. ESMT.

PERM. DRAINAGE ESMT.
TEMP. CONST. ESMT.

TEMP. CONST. ESMT.

PERM. DRAINAGE ESMT.
TEMP. CONST. ESMT.

PERM. DRAINAGE ESMT.
TEMP. CONST. ESMT.

PERM. DRAINAGE ESMT.
TEMP. CONST. ESMT.

PERM. DRAINAGE ESMT.
TEMP. CONST. ESMT.

PERM. DRAINAGE ESMT.
TEMP. CONST. ESMT.

PERM. DRAINAGE ESMT.
TEMP. CONST. ESMT.

PERM. DRAINAGE ESMT.
TEMP. CONST. ESMT.

PERM. DRAINAGE ESMT.
TEMP. CONST. ESMT.

PERM. DRAINAGE ESMT.
TEMP. CONST. ESMT.

PERM. DRAINAGE ESMT.
TEMP. CONST. ESMT.

PERM. DRAINAGE ESMT.
TEMP. CONST. ESMT.

PERM. DRAINAGE ESMT.
TEMP. CONST. ESMT.

PERM. DRAINAGE ESMT.
TEMP. CONST. ESMT.

PERM. DRAINAGE ESMT.
TEMP. CONST. ESMT.

		CHARLOTTE ENGINEERING DEPARTMENT	
REVISIONS DRAWN BY I.HOMS CHECKED BY KLB	PROPOSED DRAINAGE IMPROVEMENT & PERMANENT DRAINAGE ESMT. BY CITY OF CHARLOTTE	PROPERTY OF VIRGINIA M. FESPERMAN	JOB NO. 512-87-160 FILE NO. 2 SHEET 3
DATE 4-27-88 SCALE 1" = 30'	151-112-08	151 PG. 11	3