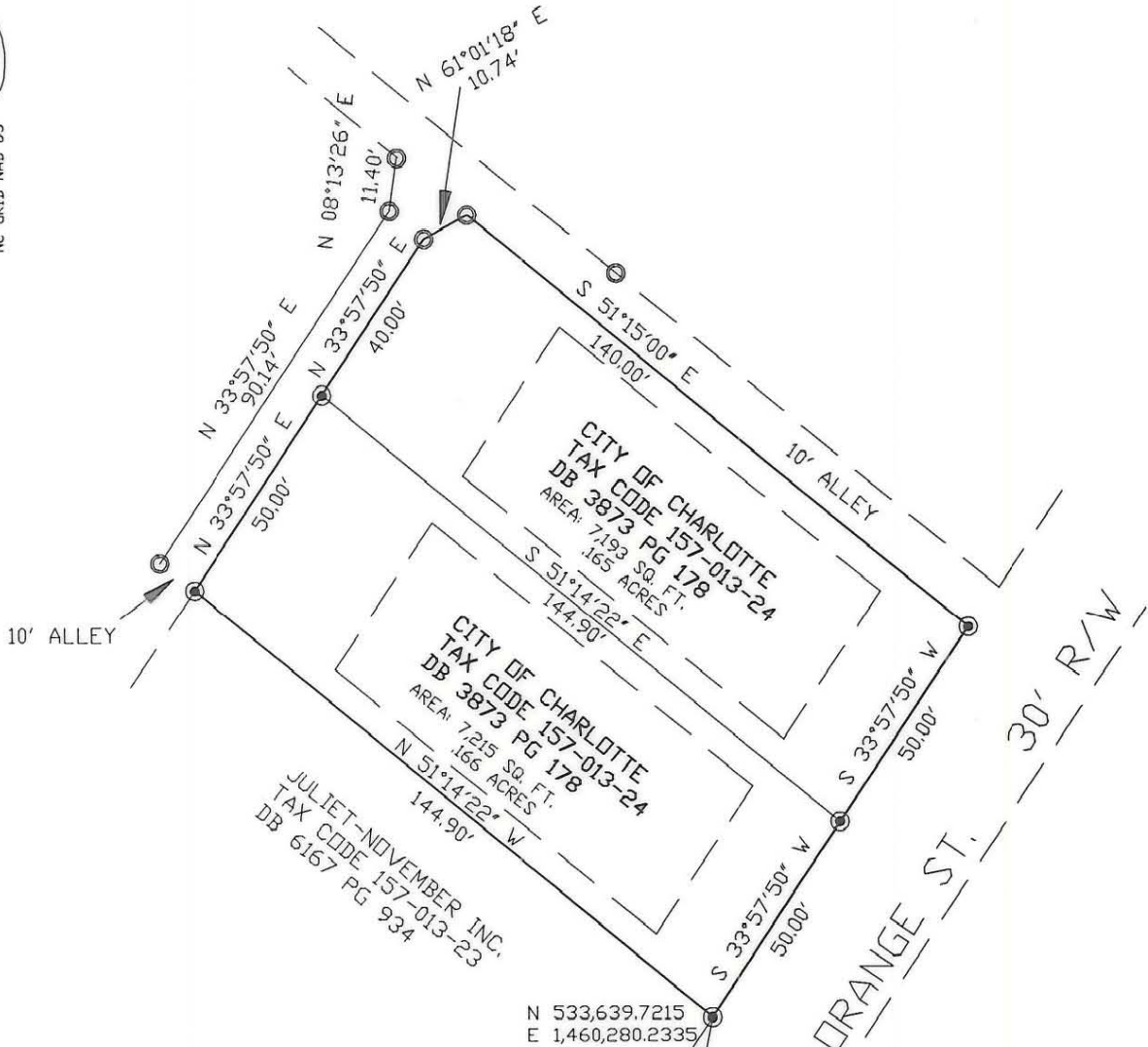
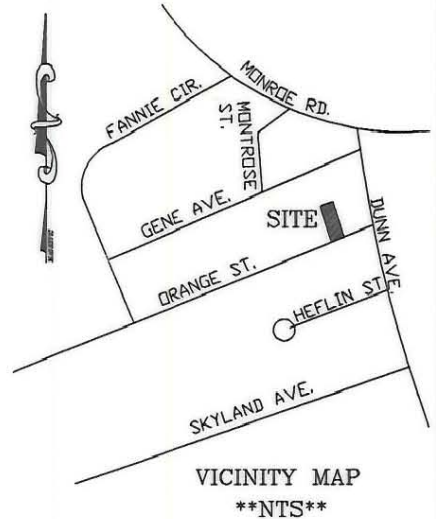
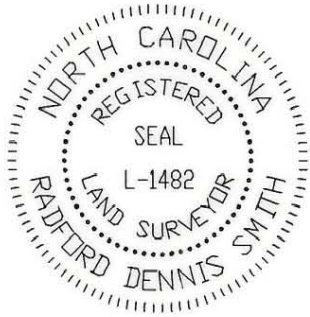


I R. DENNIS SMITH, CERTIFY THAT THIS PLAT WAS DRAWN UNDER MY SUPERVISION FROM AN ACTUAL FIELD SURVEY UNDER MY SUPERVISION. THAT THE DEEDS AND PLATS NOTED WERE USED AS REFERENCES. THAT THE BOUNDARIES NOT SURVEYED ARE CLEARLY INDICATED AS DRAWN FROM INFORMATION AS NOTED. THAT THE RATIO OF PRECISION AS CALCULATED IS 1:10,000.

WITNESS MY ORIGINAL SIGNATURE, REGISTRATION NUMBER AND SEAL THIS 20th DAY OF AUGUST, A.D., 1993.

R. Dennis Smith
 R. DENNIS SMITH
 N.C.R.L.S. L-1482

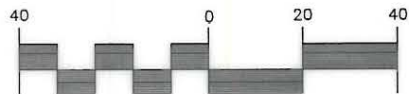


NOTES:

- 1) BROKEN LINES INDICATE PROPERTY NOT SURVEYED.
- 2) PRESENT ZONING R5
- 3) 20' FRONT SETBACK, 35' REAR SETBACK 10' STREET SIDE SETBACK AND 6' PROPERTY SIDE SETBACK

GPS M065
 N 529247.4126
 E 1459413.9050
 NAD 83
 GRID FACTOR
 0.99984570

GRAPHIC SCALE



(IN FEET)

1 inch = 40 ft.

LEGEND

- IRON PIN FOUND
- IRON PIN SET
- △ CONC. MON. FOUND

PREPARED BY:
 CITY OF CHARLOTTE
 ENGINEERING DEPARTMENT
 600 EAST FOURTH STREET
 CHARLOTTE, NC 28202
 704-336-2291

CHARLOTTE ENGINEERING DEPARTMENT		
REVISIONS	GRIER HEIGHTS BOUNDARY SURVEY	JOB NO. 94001
		FILE NO. CHAR24
DRAWN BY DB	PROPERTY OF CITY OF CHARLOTTE CITY OF CHARLOTTE, MECKLENBURG COUNTY, NC	SHEET 1
CHECKED BY DHS		OF 1
SURVEY SUPVR. <i>RDS</i>		DATE 8-16-93 SCALE 1"=40'

157-013-24