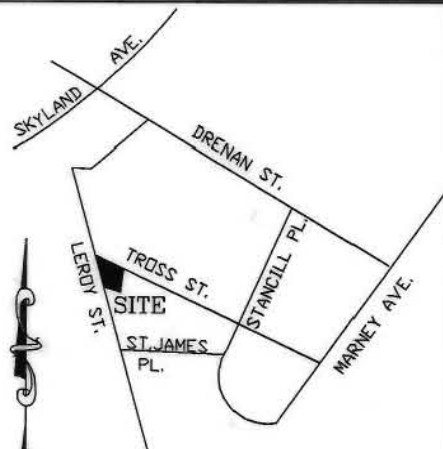
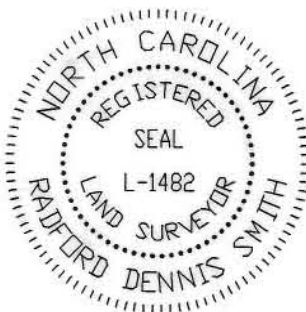


I R. DENNIS SMITH, CERTIFY THAT THIS PLAT WAS DRAWN UNDER MY SUPERVISION FROM AN ACTUAL FIELD SURVEY UNDER MY SUPERVISION. THAT THE DEEDS AND PLATS NOTED WERE USED AS REFERENCES. THAT THE BOUNDARIES NOT SURVEYED ARE CLEARLY INDICATED AS DRAWN FROM INFORMATION AS NOTED. THAT THE RATIO OF PRECISION AS CALCULATED IS 1:10,000.

WITNESS MY ORIGINAL SIGNATURE, REGISTRATION NUMBER AND SEAL THIS 21st DAY OF AUGUST, A.D., 1993.

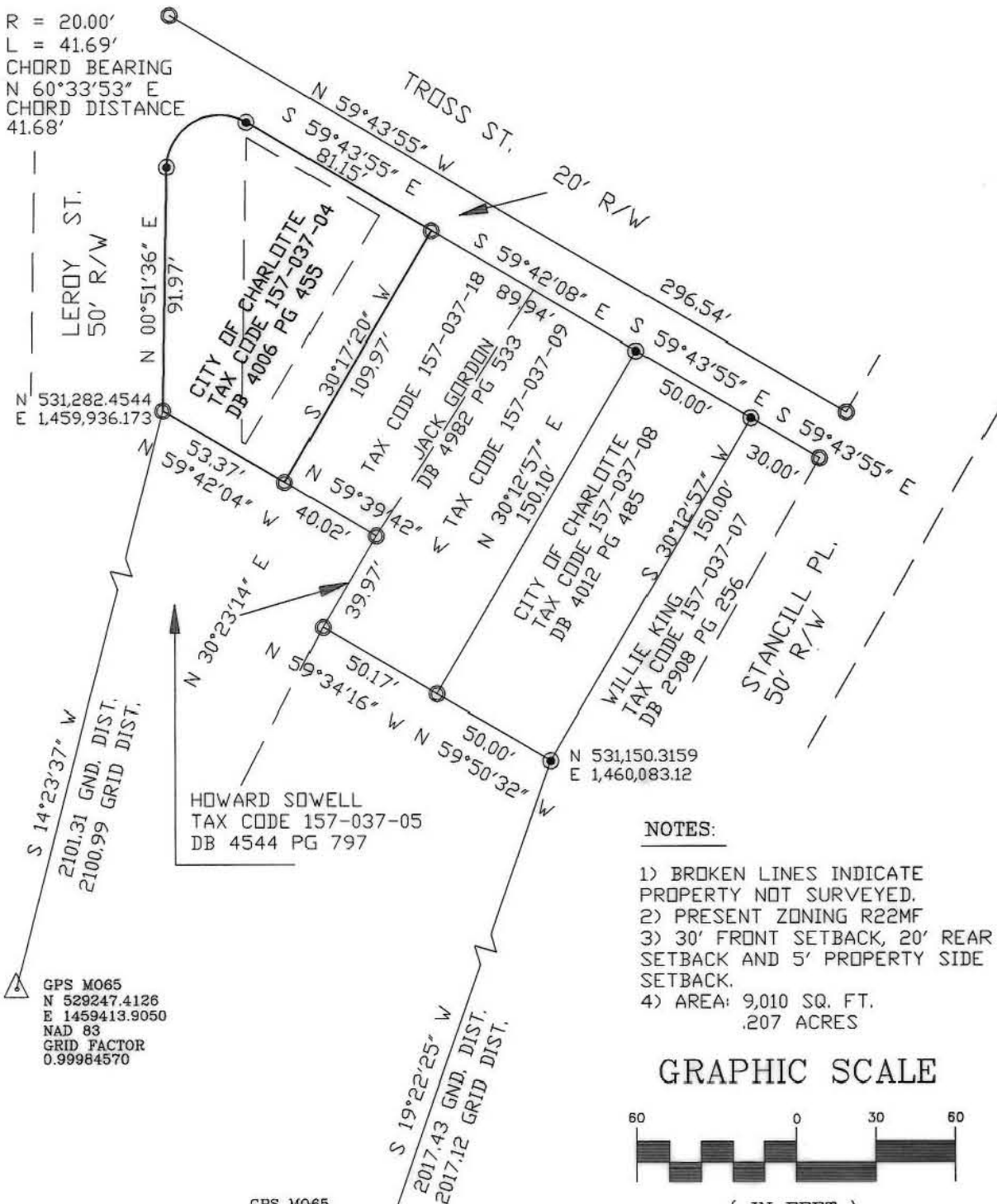
R. Dennis Smith
R. DENNIS SMITH
N.C.R.L.S. L-1482



VICINITY MAP
NTS



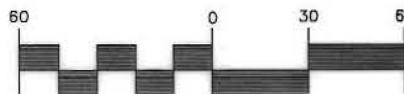
R = 20.00'
L = 41.69'
CHORD BEARING
N 60°33'53" E
CHORD DISTANCE
41.68'



NOTES:

- 1) BROKEN LINES INDICATE PROPERTY NOT SURVEYED.
- 2) PRESENT ZONING R22MF
- 3) 30' FRONT SETBACK, 20' REAR SETBACK AND 5' PROPERTY SIDE SETBACK.
- 4) AREA: 9,010 SQ. FT.
.207 ACRES

GRAPHIC SCALE




(IN FEET)
1 inch = 60 ft.

LEGEND

- IRON PIN FOUND
- IRON PIN SET
- △ CONC. MON. FOUND

PREPARED BY:
CITY OF CHARLOTTE
ENGINEERING DEPARTMENT
600 EAST FOURTH STREET
CHARLOTTE, NC 28202
704-336-2291

GPS M065
N 529247.4126
E 1459413.9050
NAD 83
GRID FACTOR
0.99984570

		CHARLOTTE ENGINEERING DEPARTMENT	
REVISIONS		JOB NO. 94001	
DRAWN BY DB		FILE NO. CHAR4	
CHECKED BY DHS		SHEET 1	
SURVEY SUPVR. <i>[Signature]</i>		OF 1	
DATE 8-17-93		SCALE 1"=60'	
GRIER HEIGHTS BOUNDARY SURVEY PROPERTY OF CITY OF CHARLOTTE CITY OF CHARLOTTE, MECKLENBURG COUNTY, NC			

157-037-04