

VICINITY MAP
NTS

NOTES:

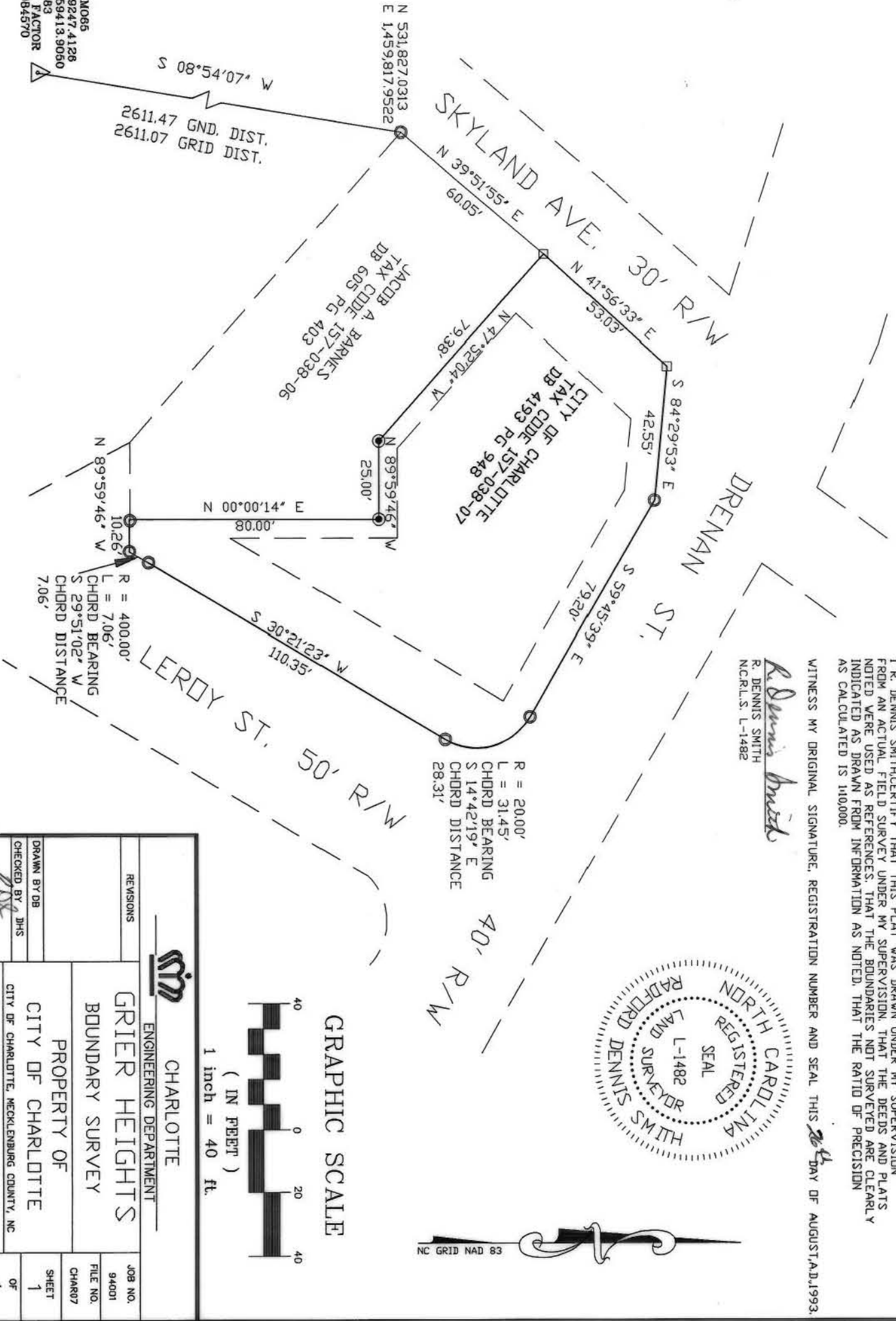
- 1) BROKEN LINES INDICATE PROPERTY NOT SURVEYED.
- 2) PRESENT ZONING R5
- 3) 20' FRONT SETBACK, 35' REAR SETBACK AND 6' PROPERTY SIDE SETBACK.
- 4) AREA: 12,480 SQ.FT., 287 ACRES.

LEGEND

- IRON PIN FOUND
- IRON PIN SET
- △ CONC. MON. FOUND
- LEAD & TACK IN S/W

PREPARED BY:
CITY OF CHARLOTTE
ENGINEERING DEPARTMENT
600 EAST FOURTH STREET
CHARLOTTE, NC 28202
704-336-2291

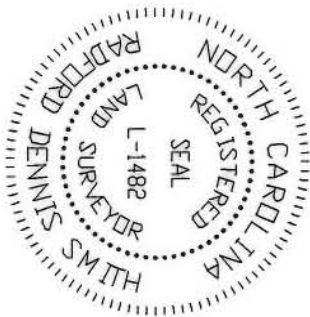
GPS M065
N 529247.4128
E 1459413.9060
NAD 83
GRID FACTOR
0.99984570



I, R. DENNIS SMITH CERTIFY THAT THIS PLAT WAS DRAWN UNDER MY SUPERVISION FROM AN ACTUAL FIELD SURVEY UNDER MY SUPERVISION THAT THE DEEDS AND PLATS NOTED WERE USED AS REFERENCES. THAT THE BOUNDARIES NOT SURVEYED ARE CLEARLY INDICATED AS DRAWN FROM INFORMATION AS NOTED. THAT THE RATIO OF PRECISION AS CALCULATED IS 110,000.

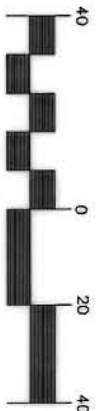
WITNESS MY ORIGINAL SIGNATURE, REGISTRATION NUMBER AND SEAL THIS 26th DAY OF AUGUST, A.D. 1993.

R. Dennis Smith
R. DENNIS SMITH
N.C.R.L.S. L-1482



NC GRID NAD 83

GRAPHIC SCALE



(IN FEET)
1 inch = 40 ft.

		CHARLOTTE ENGINEERING DEPARTMENT	
GRIER HEIGHTS BOUNDARY SURVEY		PROPERTY OF CITY OF CHARLOTTE	
REVISIONS	FILE NO.	JOB NO.	SHEET
DRAWN BY DB	94001	1	1
CHECKED BY JHS	CHAR07	OF	1
SURVEY SUPVR.	CITY OF CHARLOTTE, MECKLENBURG COUNTY, NC	DATE	SCALE
		8-18-93	1" = 40'

157-038-07