

**CURVE TABLE**

CURVE	RADIUS	LENGTH	CHORD	BEARING	DELTA
C2	1758.87'	59.16'	59.16'	S 50°44'19" W	01°55'38"
C3	1758.87'	15.80'	15.80'	N 50°01'56" E	00°30'53"
C4	1758.87'	43.36'	43.36'	S 50°59'45" W	01°24'44"

22

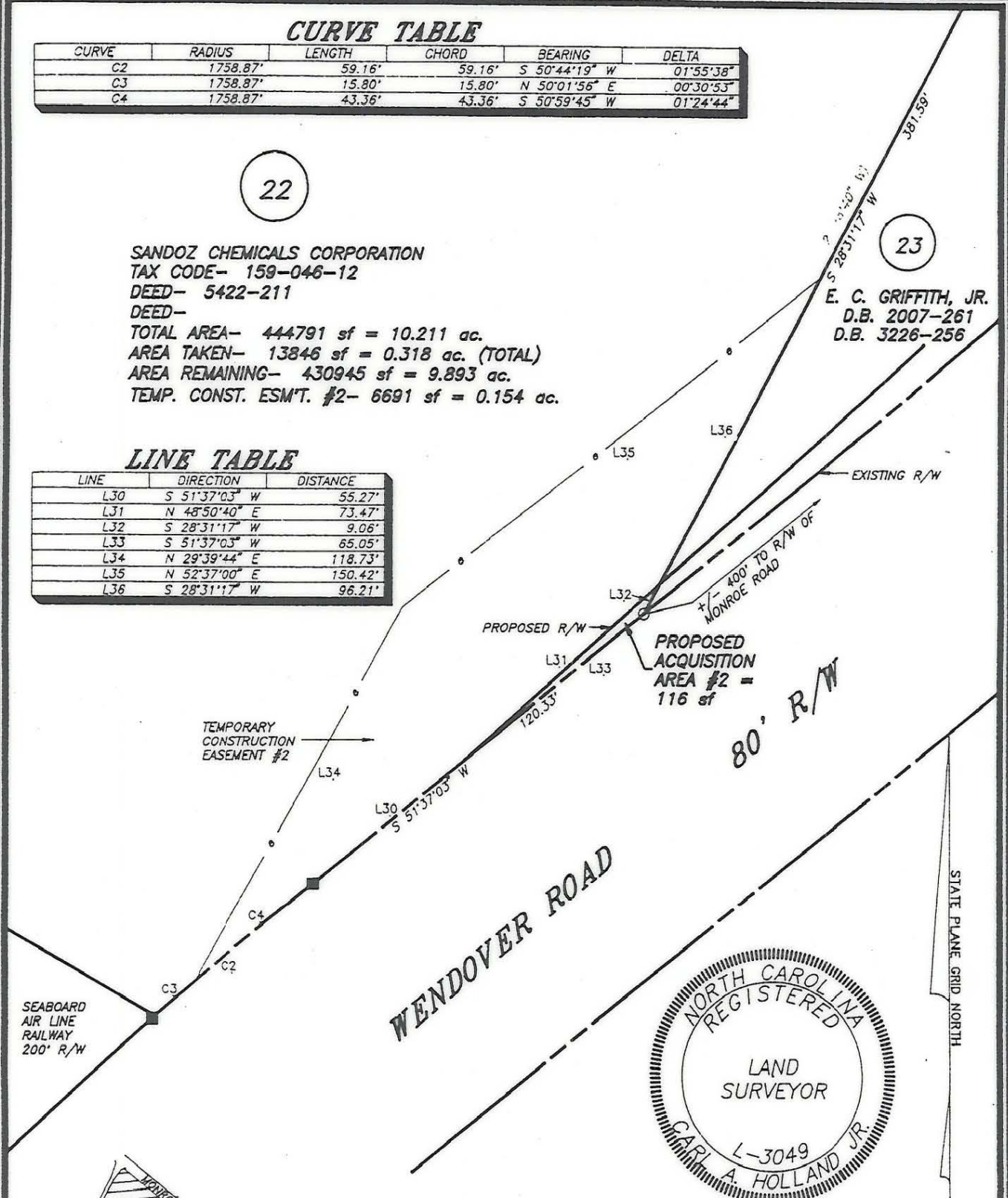
SANDOZ CHEMICALS CORPORATION  
 TAX CODE- 159-046-12  
 DEED- 5422-211  
 DEED-  
 TOTAL AREA- 444791 sf = 10.211 ac.  
 AREA TAKEN- 13846 sf = 0.318 ac. (TOTAL)  
 AREA REMAINING- 430945 sf = 9.893 ac.  
 TEMP. CONST. ESM'T. #2- 6691 sf = 0.154 ac.

**LINE TABLE**

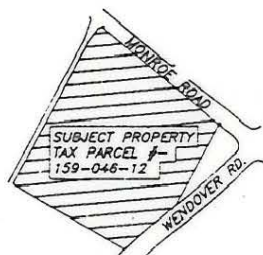
LINE	DIRECTION	DISTANCE
L30	S 51°37'03" W	55.27'
L31	N 48°50'40" E	73.47'
L32	S 28°31'17" W	9.06'
L33	S 51°37'03" W	65.05'
L34	N 29°39'44" E	118.73'
L35	N 52°37'00" E	150.42'
L36	S 28°31'17" W	96.21'

23

E. C. GRIFFITH, JR.  
 D.B. 2007-261  
 D.B. 3226-256



- NOTES:
- 1 ) Property corners shown as solid circles were located by actual survey.
  - 2 ) Bearings and distances shown in parentheses are based on deed information.
  - 3 ) This map was prepared for the purpose of property acquisition only, and is not intended to be a boundary survey of the total property shown.
  - 4 ) Acquisition and Easement areas shown were calculated using a combination of field survey data, information provided in the legal descriptions, and plats called for in the legal descriptions.
  - 5 ) State Plane Coordinate System is NAD 83.
  - 6 ) All distances shown on this map are horizontal ground distances unless otherwise noted.
  - 7 ) Grid Coordinates for GPS Monument "M-065" - N=529247.48 E=1459413.91



**LEGEND:**  
 EXISTING PROPERTY CORNER - ●  
 CALCULATED POINT - ○  
 R/W MONUMENT - ■

THIS PLAT WAS PREPARED  
 UNDER MY SUPERVISION  
*C.A. Holland Jr.*  
 C.A. HOLLAND JR.  
 NCRLS L-3049

PREPARED FOR <b>CHARLOTTE ENGINEERING DEPARTMENT</b>		
REVISIONS	<b>MONROE - EASTWAY -                  WENDOVER                  INTERSECTION IMPROVEMENTS</b>	JOB NO.
DRAWN BY: RHW CHECKED BY: CAH CAH SURVEY SUPVR.	PROPERTY OF <b>SANDOZ                  CHEMICALS                  CORPORATION</b>	PROJECT PARCEL NO. 22 SHEET 22C OF
PREPARED BY <b>C.A. HOLLAND SURVEYORS, INC.</b>	DATE: SEPTEMBER 1, 1991	SCALE: 1" = 40'

COMPUTER FILENAME: 04612C.DWG      BACKUP DISC: ACD-103

159-046-12