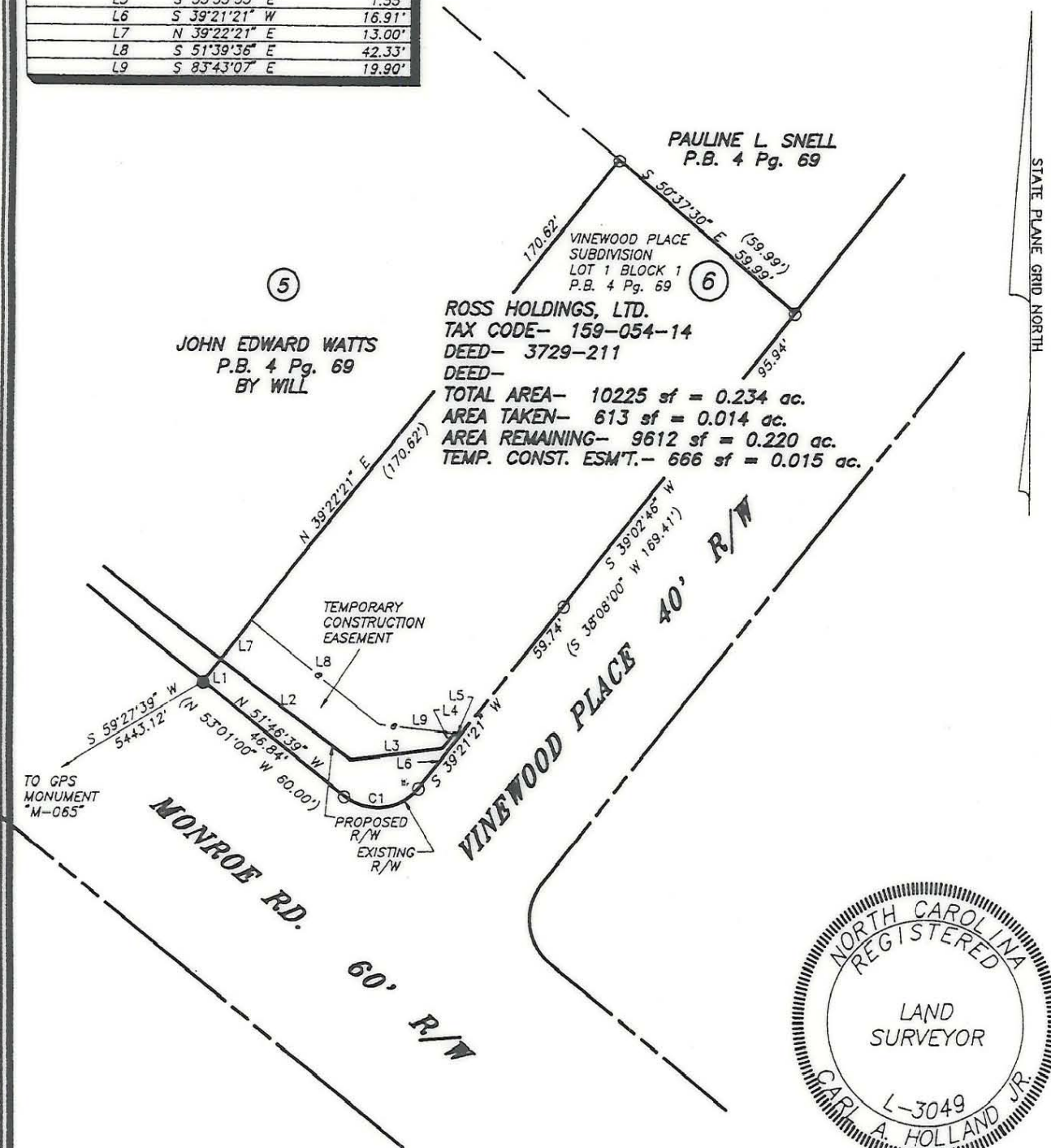


LINE TABLE

LINE	DIRECTION	DISTANCE
L1	N 39°22'21" E	7.14'
L2	S 53°13'03" E	42.38'
L3	N 82°38'30" E	24.43'
L4	N 38°23'40" E	4.92'
L5	S 53°53'53" E	1.55'
L6	S 39°21'21" W	16.91'
L7	N 39°22'21" E	13.00'
L8	S 51°39'36" E	42.33'
L9	S 83°43'07" E	19.90'

CURVE TABLE

CURVE	RADIUS	LENGTH	CHORD	BEARING
C1	14.00'	21.71'	19.60'	S 83°47'21" W



NOTES:

- 1) Property corners shown as solid circles were located by actual survey.
- 2) Bearings and distances shown in parentheses are based on deed information.
- 3) This map was prepared for the purpose of property acquisition only, and is not intended to be a boundary survey of the total property shown.
- 4) Acquisition and Easement areas shown were calculated using a combination of field survey data, information provided in the legal descriptions, and plats called for in the legal descriptions.
- 5) State Plane Coordinate System is NAD 83.
- 6) All distances shown on this map are horizontal ground distances unless otherwise noted.
- 7) Grid Coordinates for GPS Monument "M-065" - N=529247.48 E=1459413.91

LEGEND:

EXISTING PROPERTY CORNER - ●
CALCULATED POINT - ○

THIS PLAT WAS PREPARED
UNDER MY SUPERVISION

C.A. Holland Jr.
C.A. HOLLAND JR.
NCRLS L-3049

PREPARED BY
C.A. HOLLAND SURVEYORS, INC.



PREPARED FOR

CHARLOTTE ENGINEERING DEPARTMENT

REVISIONS	MONROE - EASTWAY - WENDOVER INTERSECTION IMPROVEMENTS	JOB NO.
	PROPERTY OF	PROJECT PARCEL NO.
	ROSS HOLDINGS, LTD.	6
DRAWN BY: <i>BB</i>		SHEET
CHECKED BY:		6
CAH SURVEY SUPVR.		OF
COMPUTER FILENAME: 05414.DWG	BACKUP DISC: ACD-99	DATE: SEPTEMBER 1, 1991
		SCALE: 1" = 40'

159-054-14