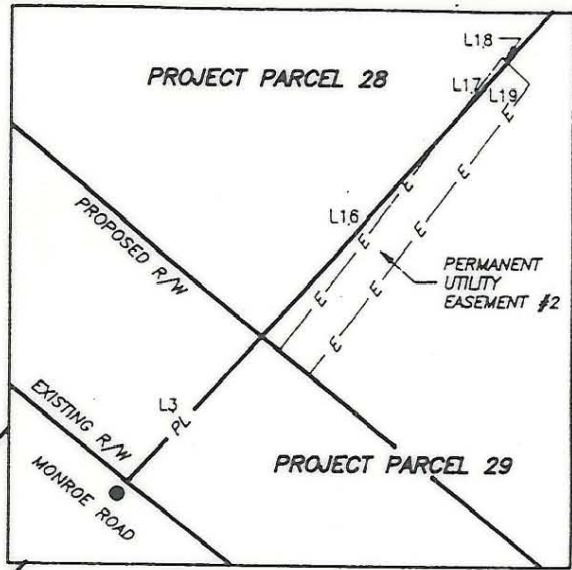


**LINE TABLE**

LINE	DIRECTION	DISTANCE
L1	N 42°56'57" E	10.55'
L2	S 51°40'19" E	100.01'
L3	S 42°56'57" W	10.45'
L4	N 42°56'57" E	4.94'
L5	S 51°43'34" E	72.98'
L6	S 47°51'02" E	26.94'
L7	S 42°56'57" W	3.21'
L8	N 42°56'57" E	10.37'
L9	S 51°40'16" E	72.07'
L10	S 47°50'53" E	27.85'
L11	S 42°56'57" W	10.23'
L12	N 42°56'57" E	21.07'
L13	S 51°38'41" E	0.71'
L14	S 38°19'57" W	21.00'
L15	N 51°40'19" W	2.41'
L16	N 42°56'57" E	14.38'
L17	N 38°20'18" E	4.85'
L18	S 47°51'05" E	0.39'
L19	S 42°56'57" W	4.83'

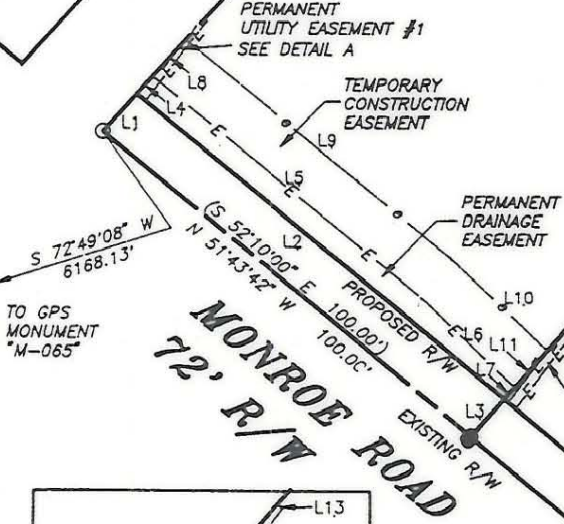


**LEGEND:**  
 EXISTING PROPERTY CORNER - ●  
 CALCULATED POINT - ○

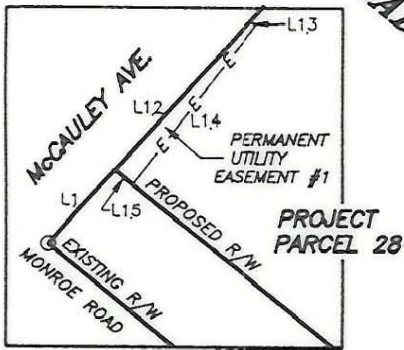
**McCAULEY AVENUE**  
 (S 42°25'00" W 184.80')  
 (N 42°56'57" E 183.95')

**28**  
 ALLSTATES CONST. CO., INC.  
 D.B. 3967-852  
 HAGLER ASSOCIATES, INC.  
 TAX CODE- 159-061-02  
 DEED- 5106-413  
 DEED-  
 TOTAL AREA- 18312 sf = 0.420 ac.  
 AREA TAKEN- 1046 sf = 0.024 ac.  
 AREA REMAINING- 17266 sf = 0.396 ac.  
 TEMP. CONST. ESM'T.- 1500 sf = 0.034 ac.  
 PERM. DRAIN. ESM'T.- 473 sf = 0.011 ac.  
 PERM. UTIL ESM'T. #1- 33 sf = 0.001 ac.  
 PERM. UTIL ESM'T. #2- 1 sf = 0.00002 ac.

ALLSTATES CONST. CO., INC.  
 D.B. 5349-251



- NOTES:**
- 1) Property corners shown as solid circles were located by actual survey.
  - 2) Bearings and distances shown in parentheses are based on deed information.
  - 3) This map was prepared for the purpose of property acquisition only, and is not intended to be a boundary survey of the total property shown.
  - 4) Acquisition and Easement areas shown were calculated using a combination of field survey data, information provided in the legal descriptions, and plats called for in the legal descriptions.
  - 5) State Plane Coordinate System is NAD 83.
  - 6) All distances shown on this map are horizontal ground distances unless otherwise noted.
  - 7) Grid Coordinates for GPS Monument "M-065" - N=529247.48 E=1459413.91



THIS PLAT WAS PREPARED  
 UNDER MY SUPERVISION  
 C.A. Holland Jr.  
 C.A. HOLLAND JR.  
 NCRLS L-3049

PREPARED BY  
**C.A. HOLLAND SURVEYORS, INC.**

PREPARED FOR		
<b>CHARLOTTE ENGINEERING DEPARTMENT</b>		
REVISIONS	<b>MONROE - EASTWAY - WENDOVER INTERSECTION IMPROVEMENTS</b>	JOB NO.
		PROJECT PARCEL NO.
	PROPERTY OF	28
	<b>HAGLER ASSOCIATES, INC.</b>	SHEET
		28
DRAWN BY: RHW		OF
CHECKED BY: CAH		
CAH SURVEY SUPVR.	DATE: SEPTEMBER 1, 1991	SCALE: 1" = 40'

COMPUTER FILENAME: 06102.DWG      BACKUP DISC: ACD-121

159-061-02