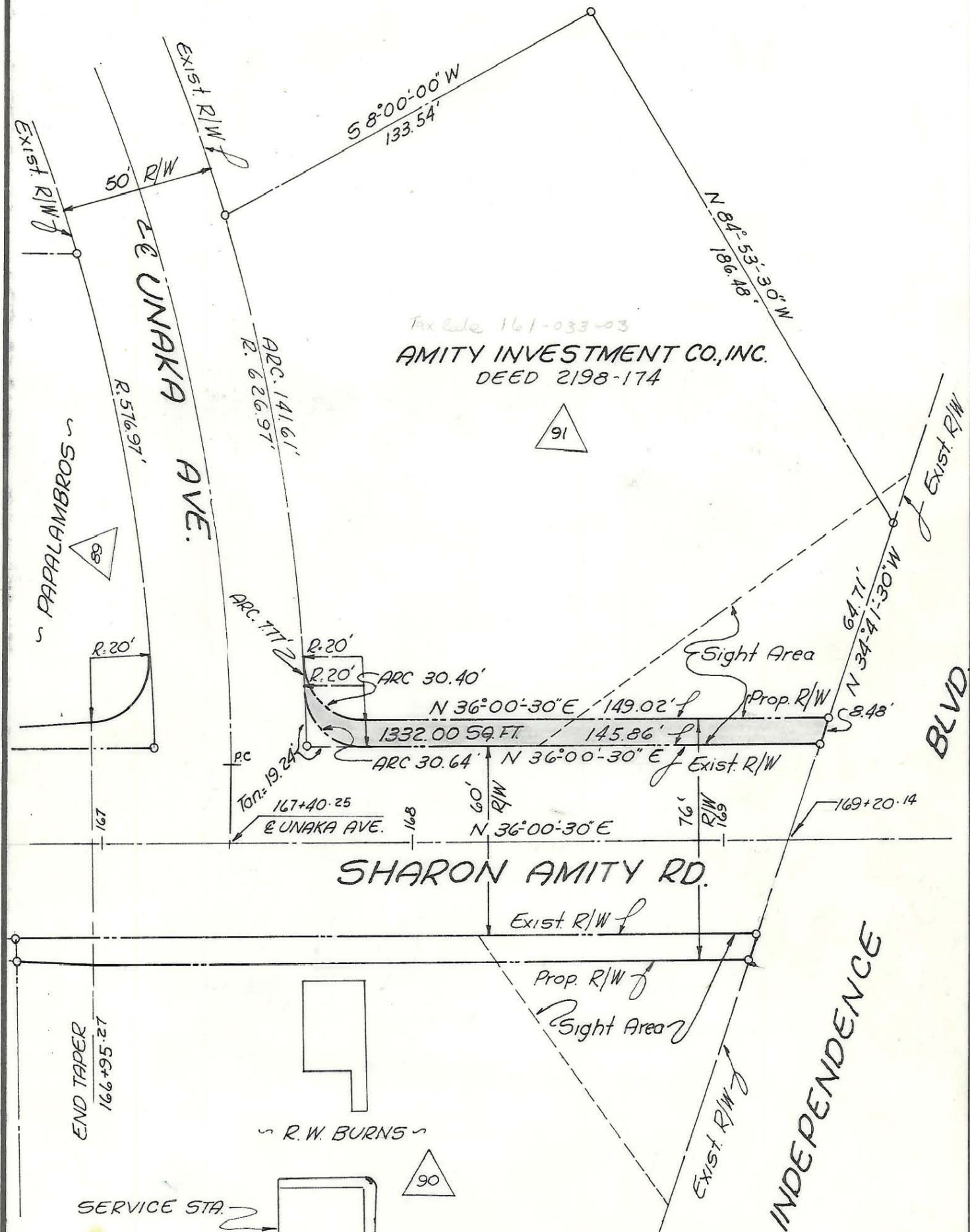


Tax ID 161-033-03  
**AMITY INVESTMENT CO., INC.**  
 DEED 2198-174



**SHARON AMITY RD.**

**INDEPENDENCE**

END TAPER  
 12+56+99/1

SERVICE STA.

Bearings are based on  
Deed Description

NOTE: PLAT TRACED FROM MAP  
 PREPARED BY WHITEHEAD  
 ASSOC. DWG. NO. D-1064-2

<b>CITY OF CHARLOTTE</b> NORTH CAROLINA <b>ENGINEERING DEPARTMENT</b>		
<b>REVISIONS</b>	ADDITIONAL R/W <b>SHARON AMITY RD.</b> WIDENING	JOB NO. 169
	PROPERTY OF <b>AMITY INVESTMENT CO.</b>	FILE NO.
DRAWN BY R/W		SHEET 14
CHECKED BY CDR		of 14
CITY ENGINEER	DATE 4/14/66	SCALE 1" = 40'

111-033-03

A-7-1-72