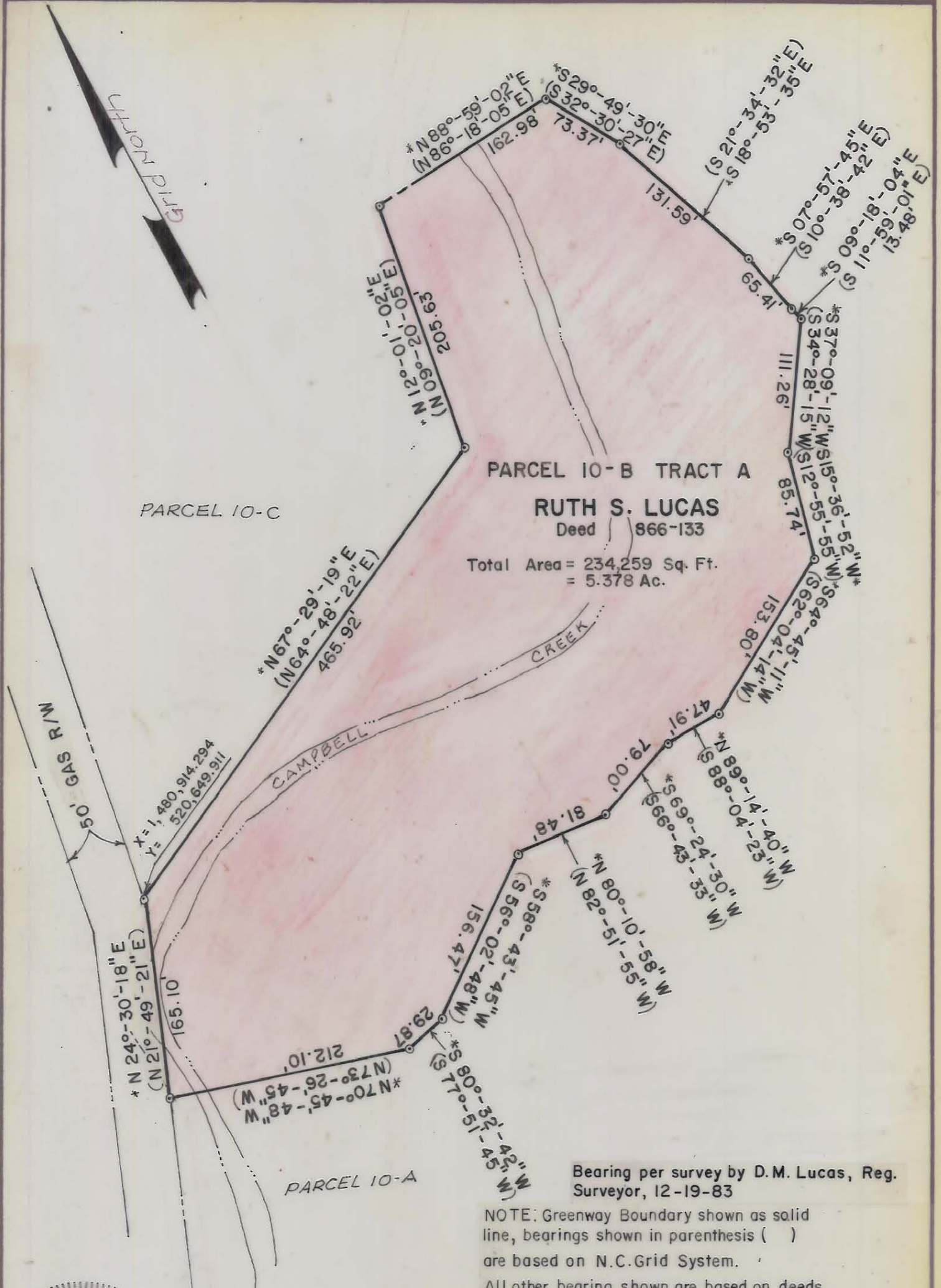


*UPPER PART*



**NOTE:** Property corners shown circled were located by actual survey. Bearings are based on SEE NOTE

This plat was prepared under my supervision Stephen A. Gilbert  
 N. C. Reg. Surveyor No. L-1785

<b>MECKLENBURG COUNTY PARK AND RECREATION DEPARTMENT</b>		
<b>CITY OF CHARLOTTE NORTH CAROLINA DEPARTMENT OF PUBLIC WORKS ENGINEERING DIVISION</b>		
<b>REVISIONS</b>	<b>PROPERTY TO BE ACQUIRED FOR CAMPBELL CREEK GREENWAY</b>	<b>JOB NO. 512- 82-074 FILE NO.</b>
	<b>PROPERTY OF RUTH S. LUCAS</b>	<b>SHEET</b>
<b>DRAWN BY</b> B.C.	<b>CITY ENGINEER</b>	<b>OF</b>
<b>CHECKED BY</b> <i>ku</i>		
<b>DATE 12-22-83</b>		<b>SCALE 1" = 100'</b>