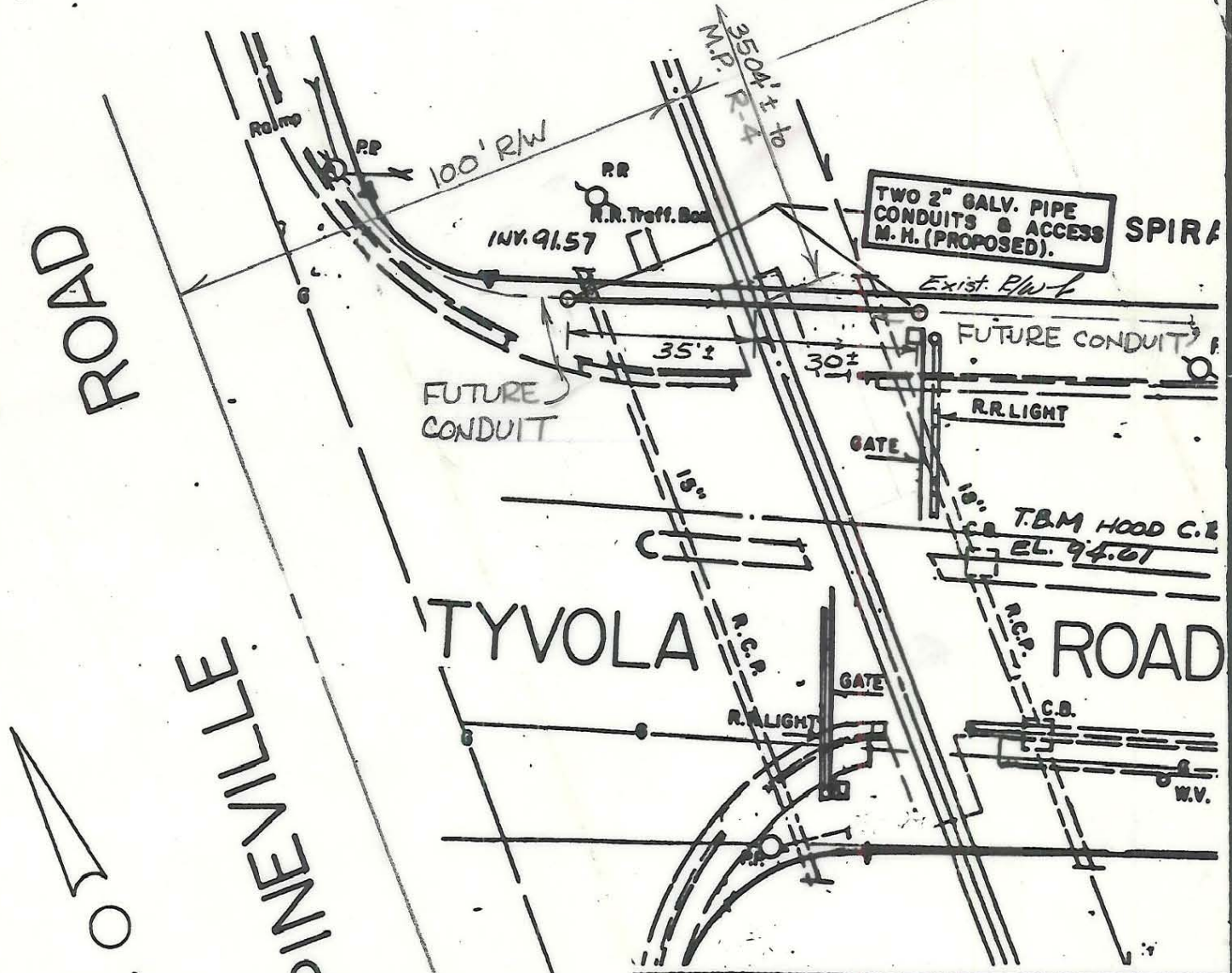


PROFILE OF PROPOSED CONDUIT 100' R/W



**CITY OF CHARLOTTE
NORTH CAROLINA
DEPARTMENT OF PUBLIC WORKS
ENGINEERING DIVISION**

REVISIONS	SOUTHERN RAILWAY AT TYVOLA ROAD	JOB NO.
RWM 7/7/83 MA 5 8/23/83		FILE NO.
DRAWN BY M.S.	PROPOSED PIPE ENCROACHMENT	SHEET
CHECKED BY SG		1
CITY ENGINEER	DATE MAY 19 1983 SCALE 1"=30'	OF
		1