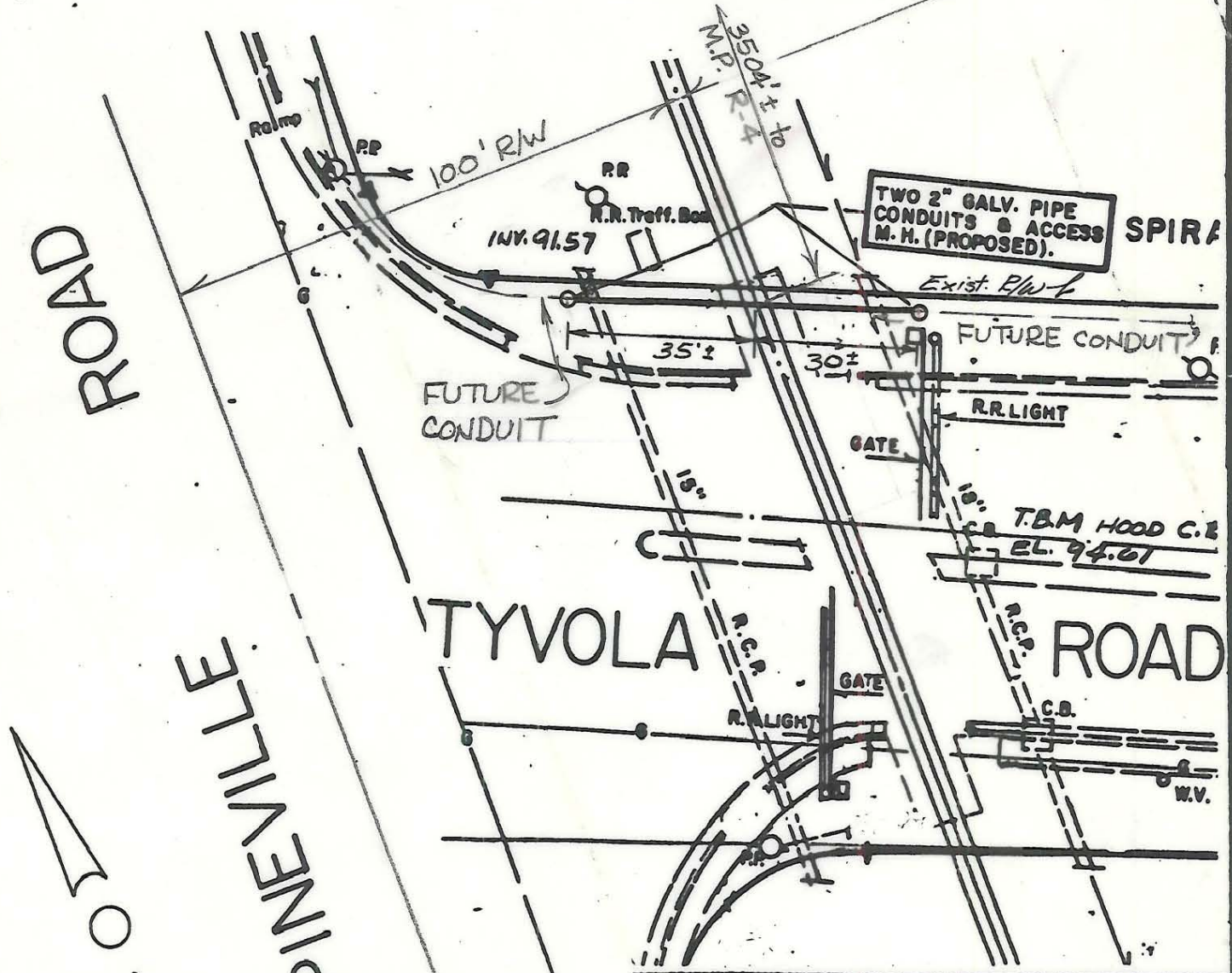


PROFILE OF PROPOSED CONDUIT 100' R/W



<b>CITY OF CHARLOTTE NORTH CAROLINA DEPARTMENT OF PUBLIC WORKS ENGINEERING DIVISION</b>		
<b>REVISIONS</b> RWM 7/7/83 MAS 8/23/83	<b>SOUTHERN RAILWAY AT TYVOLA ROAD</b>	<b>JOB NO.</b> <b>FILE NO.</b>
<b>DRAWN BY MAS</b> <b>CHECKED BY SG</b> CITY ENGINEER	<b>PROPOSED PIPE ENCROACHMENT</b>	<b>SHEET</b> 1 <b>OF</b> 1
DATE MAY 19 1983 SCALE 1"=30'		