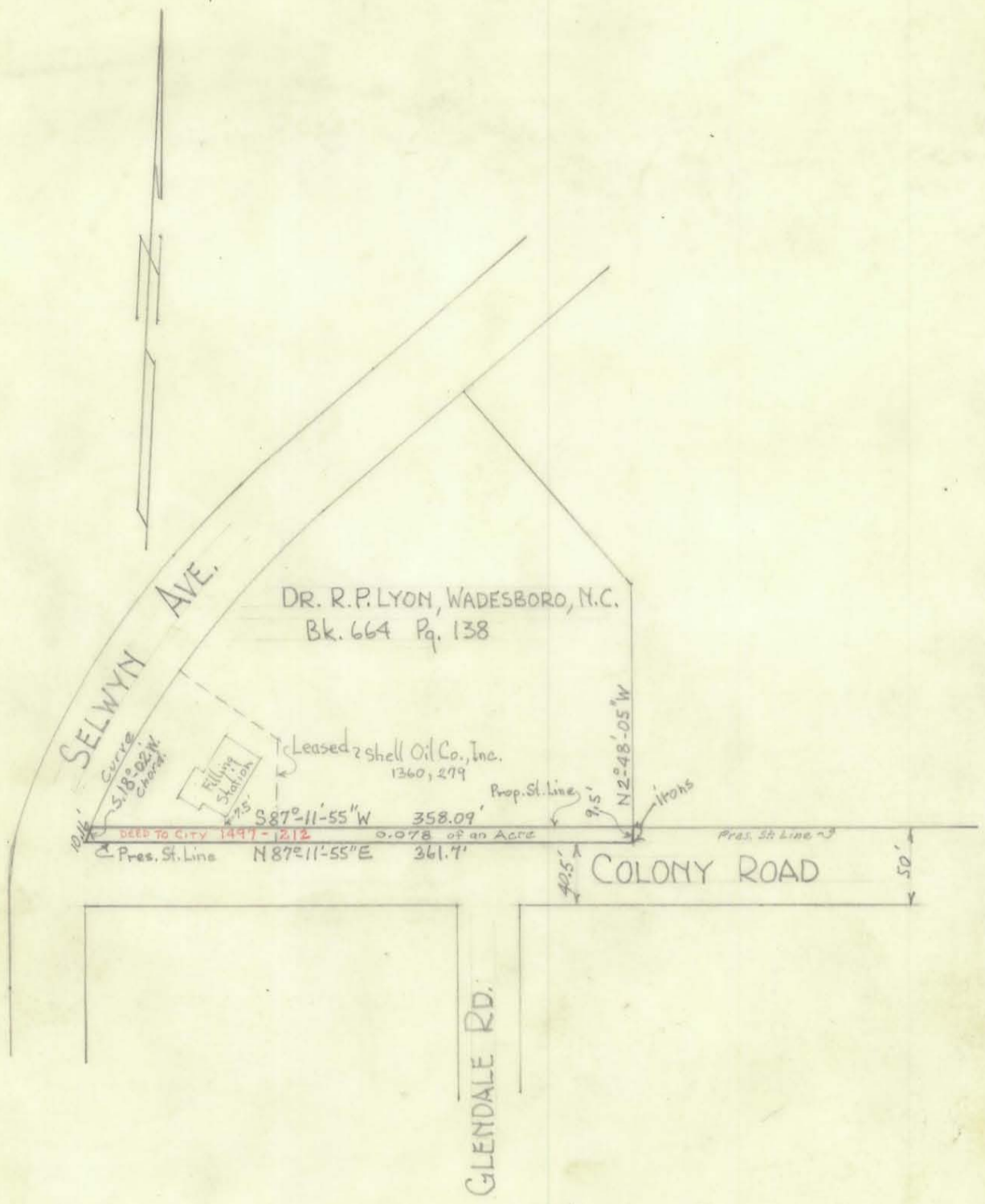


A-7-D-55
1090#23



MAP OF PROPERTY
TO BE ACQUIRED FROM
DR. R.P. LYON
WADESBORO, N. C.

BY THE CITY OF CHARLOTTE, N.C.
FOR STREET PURPOSES
Office of the City Engineer, Charlotte, N.C.

Scale: 1" = 100'

August 22, 1951

175-082-12 A-7-D-56