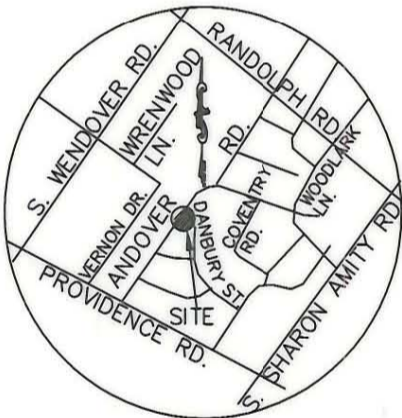
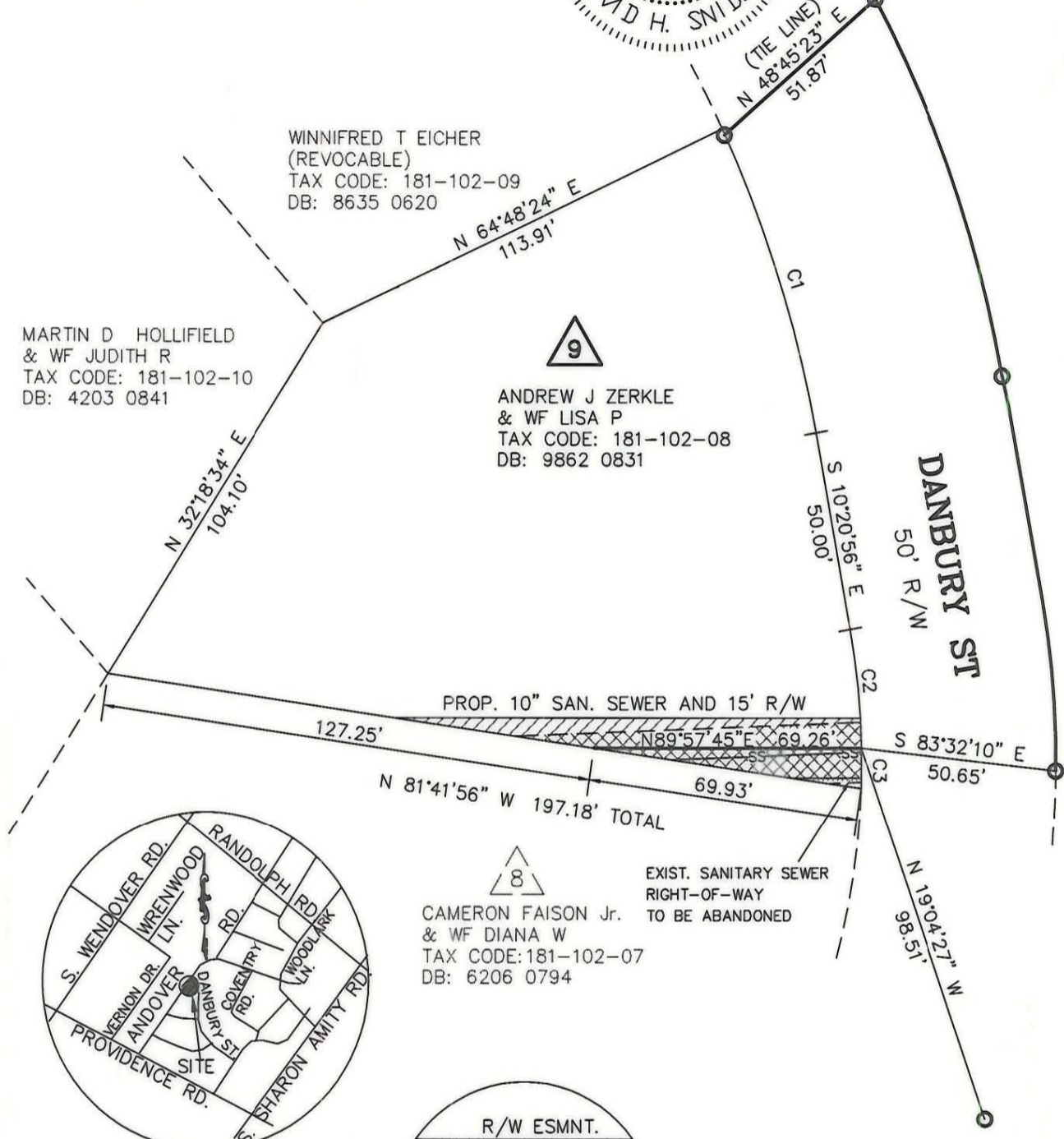
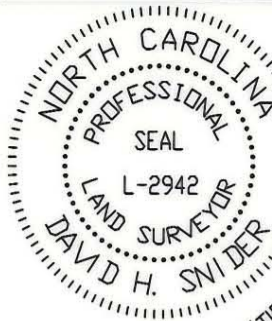
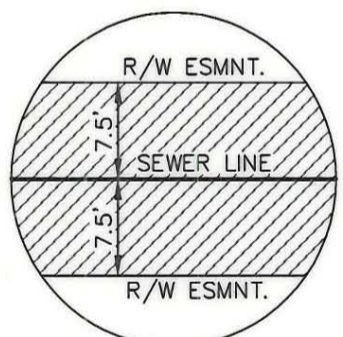


I, DAVID H. SNIDER, CERTIFY THAT THIS PLAT WAS PREPARED UNDER MY SUPERVISION AND THAT THE PLAT WAS PREPARED FOR THE PURPOSE OF ACQUISITION AND EASEMENTS ONLY, AND IS NOT INTENDED TO BE A BOUNDARY SURVEY OF PROPERTY

David H. Snider 7/6/99
 DAVID H. SNIDER, NC P.L.S. L-2942 DATE



VICINITY MAP
 NOT TO SCALE

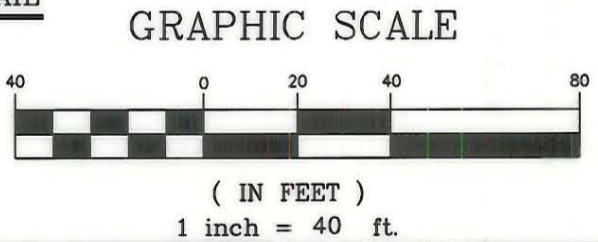


R/W ESMNT. DETAIL
 NOT TO SCALE

CURVE TABLE				
CURVE	RADIUS	LENGTH	BEARING	CHORD
C1	304.90	79.94'	N17°52'47"W	79.71'
C2	186.51	29.93'	N05°46'45"W	29.90'
C3	186.51	10.14'	N00°22'36"E	10.14'

LEGEND:

- IRON PIN FOUND
- PERMANENT SANITARY SEWER ESMNT.
- EXISTING SANITARY SEWER ESMNT.
- EXIST. SAN. SEWER R/W TO BE ABANDONED



PREPARED BY:
 CITY OF CHARLOTTE
 ENGINEERING DEPARTMENT
 600 EAST FOURTH STREET
 CHARLOTTE, NC 28208
 704-336-2291

CHARLOTTE ENGINEERING DEPARTMENT		
REVISIONS	SANITARY SEWER RELOCATION ANDOVER ROAD STORM DRAINAGE IMPROVEMENT PROJECT	JOB NO. 671-96-701 LAN#96701
	EASEMENT ACQUISITION OF ANDREW ZERKLE & WF LISA CHARLOTTE, MECKLENBURG CO., NC	FILE NO. PLAT3
DRAWN BY DBS		SHEET 1
CHECKED BY <i>DBS</i>		OF 1
SURVEY SUPVR.	DATE 1/29/99	SCALE 1"=40'

181-102-08