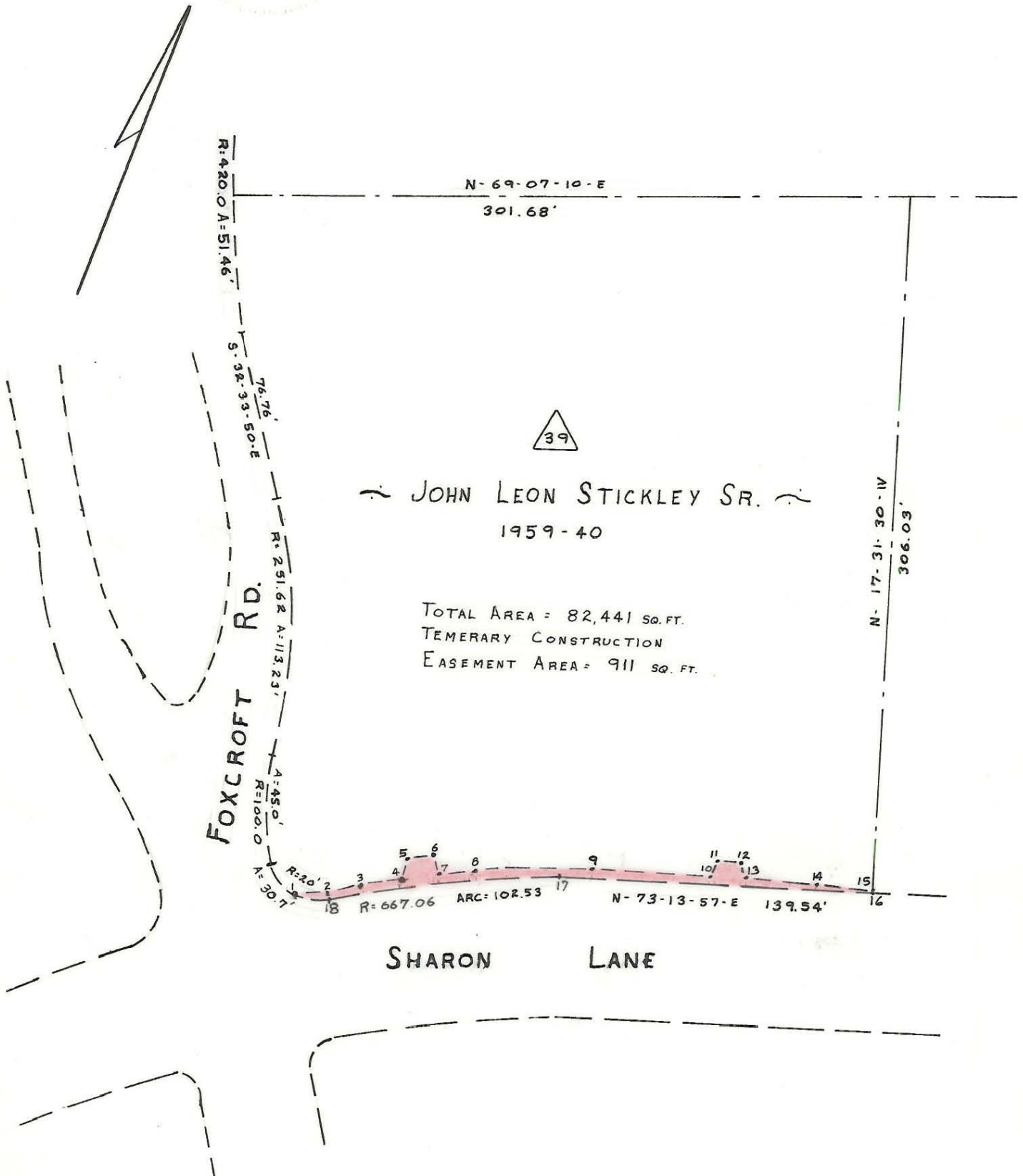


This plat was prepared under my supervision *R. B. Bille*
 N.C. Reg. Engineer No. **4343**

NOTE: Property corners shown circled were located by actual survey. Bearings are based on SHARON LN. WIDENING PLANS



| FROM | TO | DISTANCE | BEARING |
|------|----|---------------|------------------|
| 1 | 2 | 4.00' | N-61-42-15-E |
| 2 | 3 | 19.86' | N-61-42-15-E |
| 3 | 4 | 15.43' | N-68-49-45-E |
| 4 | 5 | 8.54' | N-0-36-53-W |
| 5 | 6 | 12.00' | N-68-49-45-E |
| 6 | 7 | 8.25' | S-35-12-25-E |
| 7 | 8 | 17.00' | N-68-49-45-E |
| 8 | 9 | 51.28' | N-70-2-37-E |
| 9 | 10 | 52.54' | N-73-13-57-E |
| 10 | 11 | 6.32' | N-1-40-3-E |
| 11 | 12 | 12.00' | N-73-13-57-E |
| 12 | 13 | 6.32' | S-35-12-9-E |
| 13 | 14 | 31.06' | N-76-55-26-E |
| 14 | 15 | 26.02' | N-75-26-6-E |
| 15 | 16 | 1.00' | S-16-46-3-E |
| 16 | 17 | 139.54' | S-73-13-57-W |
| 17 | 18 | ARC = 102.53' | RADIUS = 667.06' |
| 18 | 1 | ARC = 7.79' | RADIUS = 20.00' |

Approved by _____
 R/W Agent

| | | |
|--|--|--|
| CITY OF CHARLOTTE NORTH CAROLINA ENGINEERING DEPARTMENT | | |
| REVISIONS | SHARON LANE WIDENING | JOB NO. 513-66 436 FILE NO. |
| | PROPERTY OF JOHN LEON STICKLEY SR. | SHEET 39 OF |
| DRAWN BY <i>R.L.B.</i> CHECKED BY <i>J.T.T.</i> | CITY ENGINEER | DATE JUNE, 1971 SCALE 1"=60' |