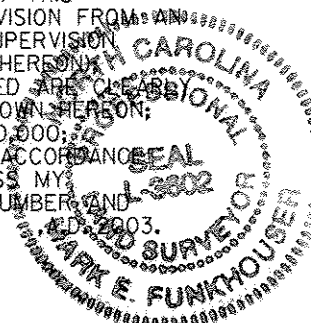
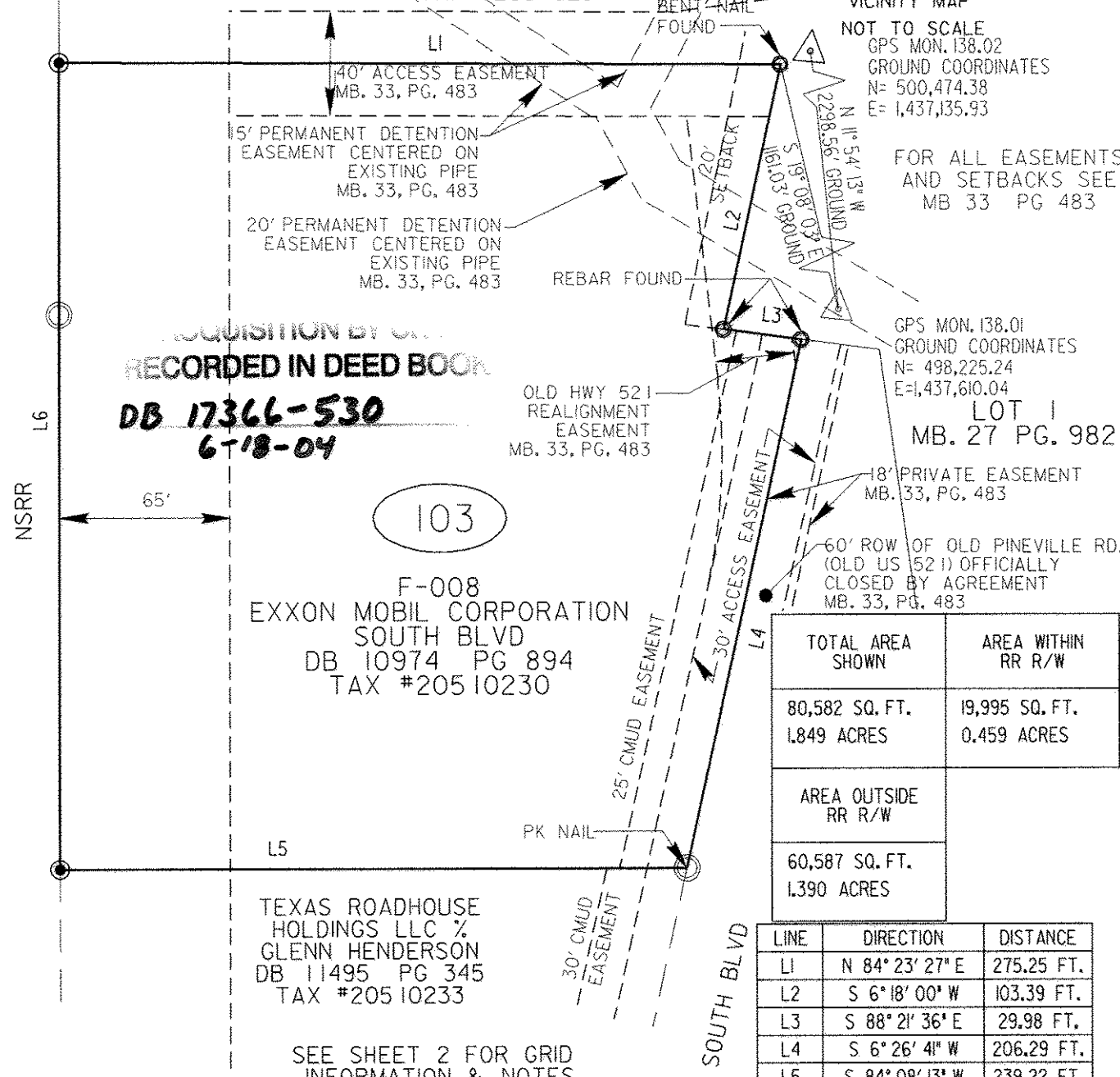
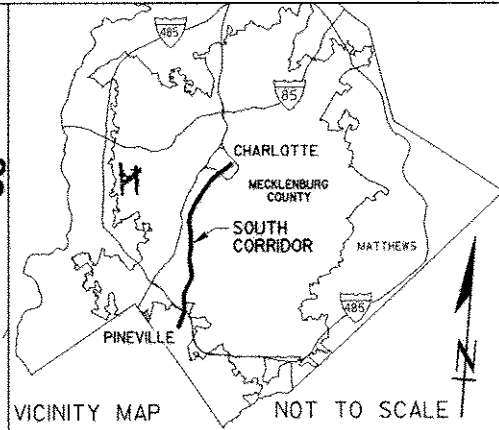


I, MARK E. FUNKHOUSER, CERTIFY THAT THIS PLAT WAS DRAWN UNDER MY SUPERVISION FROM AN ACTUAL SURVEY MADE UNDER MY SUPERVISION (DEED DESCRIPTION AS REFERENCED HEREON) THAT THE BOUNDARIES NOT SURVEYED ARE CLEARLY INDICATED FROM INFORMATION AS SHOWN HEREON; THAT THE RATIO OF PRECISION +1:20,000; THAT THIS PLAT WAS PREPARED IN ACCORDANCE WITH G.S. 47-30 AS AMENDED. WITNESS MY ORIGINAL SIGNATURE, REGISTRATION NUMBER AND SEAL THIS 8th DAY OF MAY 2003.



MARK E. FUNKHOUSER
REGISTRATION NUMBER L-3602

TRICOR FIVE HUNDRED
TWENTY ONE
DB 10605 PG 492
TAX #205 10231



ACQUISITION BY
RECORDED IN DEED BOOK
DB 17366-530
6-18-04

103

F-008
EXXON MOBIL CORPORATION
SOUTH BLVD
DB 10974 PG 894
TAX #205 10230

TEXAS ROADHOUSE
HOLDINGS LLC %
GLENN HENDERSON
DB 11495 PG 345
TAX #205 10233

VICINITY MAP
NOT TO SCALE
GPS MON. 138.02
GROUND COORDINATES
N= 500,474.38
E= 1,437,135.93

FOR ALL EASEMENTS
AND SETBACKS SEE
MB 33 PG 483

GPS MON. 138.01
GROUND COORDINATES
N= 498,225.24
E= 1,437,610.04

LOT 1
MB. 27 PG. 982

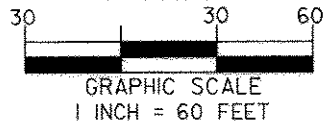
18' PRIVATE EASEMENT
MB. 33, PG. 483

60' ROW OF OLD PINEVILLE RD.
(OLD US 521) OFFICIALLY
CLOSED BY AGREEMENT
MB. 33, PG. 483

TOTAL AREA SHOWN	AREA WITHIN RR R/W
80,582 SQ. FT. 1.849 ACRES	19,995 SQ. FT. 0.459 ACRES

AREA OUTSIDE RR R/W
60,587 SQ. FT. 1.390 ACRES

LINE	DIRECTION	DISTANCE
L1	N 84° 23' 27" E	275.25 FT.
L2	S 6° 18' 00" W	103.39 FT.
L3	S 88° 21' 36" E	29.98 FT.
L4	S 6° 26' 41" W	206.29 FT.
L5	S 84° 08' 13" W	239.22 FT.
L6	N 5° 51' 40" W	307.76 FT.



SEE SHEET 2 FOR GRID
INFORMATION & NOTES

STATE OF NORTH CAROLINA
COUNTY OF MECKLENBURG

I, _____, Review Officer of Mecklenburg County, certify that the map or plat to which this certification is attached meets all statutory requirements for recording.

Review Officer _____ Date _____

- LEGEND
- LINES NOT SURVEYED -----
 - RIGHT OF WAY -----
 - REBAR SET ●
 - PROPERTY CORNER FOUND ○
 - GEODETIC MONUMENT △
 - COMPUTED POINT ○ CP

PBSJ Survey Prepared By
200 EAST WOODLAWN ROAD, SUITE 310
CHARLOTTE, NORTH CAROLINA 28217
704-522-7275



CHARLOTTE
ENGINEERING AND PROPERTY MANAGEMENT

REVISIONS 05/07/2003...CAA	SOUTH CORRIDOR LRT PROJECT	JOB NO. 512-01-078
DRAWN BY: CRH CHECKED BY: MEF		FILE NO.
SURVEY SUPVR. MEF	PROPERTY ACQUISITION: EXXON MOBIL CORPORATION	SHEET 1
	CHARLOTTE, MECKLENBURG CO., NC	OF 2
DATE: 12-30-02	SCALE: 1" = 60'	