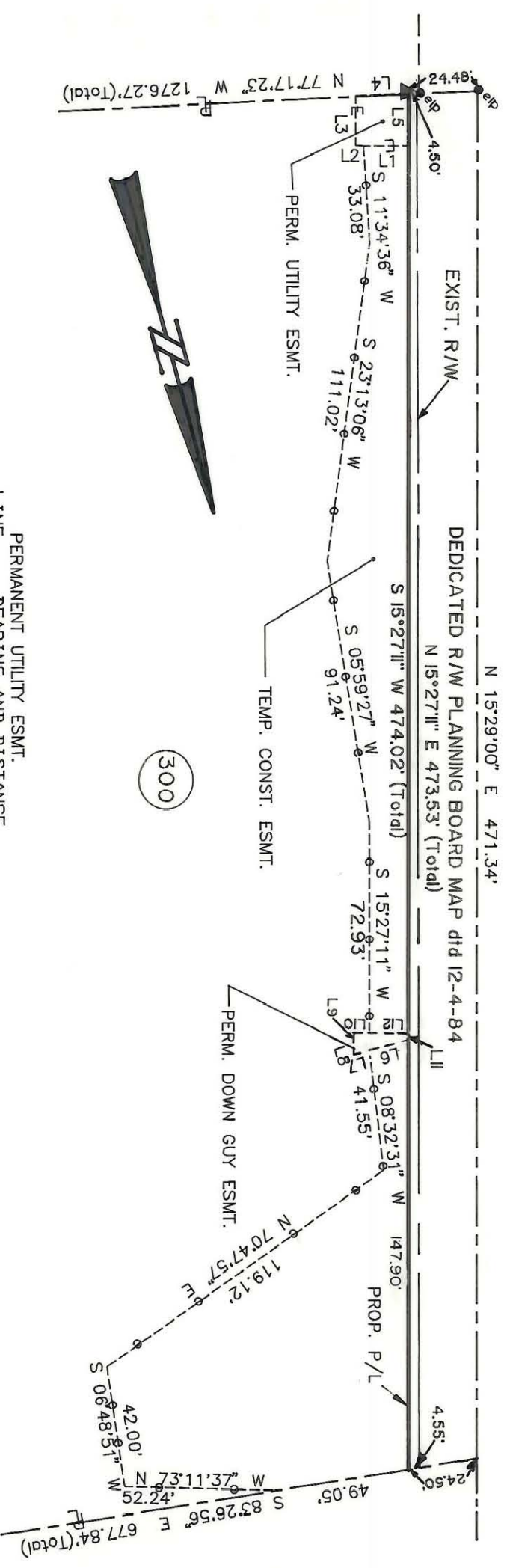


Park Road



300

PERMANENT UTILITY ESMT.

LINE	BEARING AND DISTANCE
1	S 74°32'49" E 16.24'
2	S 74°32'49" E 2.76'
3	S 15°27'11" W 17.20'
4	N 77°16'38" W 19.02'
5	N 15°27'11" E 18.11'
PERMANENT DOWN GUY ESMT.	
6	S 89°33'21" E 14.49'
7	S 89°33'21" E 5.51'
8	S 00°22'26" W 2.90'
9	S 15°27'11" W 5.32'
10	N 74°32'49" W 5.84'
11	N 15°27'11" E 2.07'
12	N 74°32'49" W 14.00'

TEMP. CONST. ESMT.

L4	N 77°17'23" W 1276.27' (Total)
L5	S 11°34'36" W 33.08'
L3	S 23°13'06" W 111.02'
L1	S 15°27'11" W 474.02' (Total)
L2	S 05°59'27" W 91.24'
L6	S 15°27'11" W 72.93'
L7	S 08°32'31" W 41.55'
L8	S 08°32'31" W 147.90'
L9	N 70°47'57" E 119.12'
L10	S 06°48'51" W 42.00'
L11	S 83°26'56" E 677.84' (Total)
L12	N 72°11'32" E 42.25'

PERM. DOWN GUY ESMT.

L13	S 08°32'31" W 41.55'
L14	S 08°32'31" W 147.90'
L15	N 70°47'57" E 119.12'
L16	S 06°48'51" W 42.00'
L17	S 83°26'56" E 677.84' (Total)
L18	N 72°11'32" E 42.25'

EXIST. R/W

L19	N 15°29'00" E 471.34'
L20	N 15°27'11" E 473.53' (Total)

DEDICATED R/W PLANNING BOARD MAP dtd 12-4-84

L21	N 15°27'11" E 473.53' (Total)
-----	-------------------------------

PROP. P/L

L22	S 15°27'11" W 474.02' (Total)
-----	-------------------------------

PERM. UTILITY ESMT.

L23	S 11°34'36" W 33.08'
L24	S 23°13'06" W 111.02'

TEMP. CONST. ESMT.

L25	S 05°59'27" W 91.24'
L26	S 15°27'11" W 72.93'
L27	S 08°32'31" W 41.55'
L28	S 08°32'31" W 147.90'
L29	N 70°47'57" E 119.12'
L30	S 06°48'51" W 42.00'
L31	S 83°26'56" E 677.84' (Total)
L32	N 72°11'32" E 42.25'

PERM. DOWN GUY ESMT.

L33	S 08°32'31" W 41.55'
L34	S 08°32'31" W 147.90'
L35	N 70°47'57" E 119.12'
L36	S 06°48'51" W 42.00'
L37	S 83°26'56" E 677.84' (Total)
L38	N 72°11'32" E 42.25'

EXIST. R/W

L39	N 15°29'00" E 471.34'
L40	N 15°27'11" E 473.53' (Total)

DEDICATED R/W PLANNING BOARD MAP dtd 12-4-84

L41	N 15°27'11" E 473.53' (Total)
-----	-------------------------------

PROP. P/L

L42	S 15°27'11" W 474.02' (Total)
-----	-------------------------------

PERM. UTILITY ESMT.

L43	S 11°34'36" W 33.08'
L44	S 23°13'06" W 111.02'

TEMP. CONST. ESMT.

L45	S 05°59'27" W 91.24'
L46	S 15°27'11" W 72.93'
L47	S 08°32'31" W 41.55'
L48	S 08°32'31" W 147.90'
L49	N 70°47'57" E 119.12'
L50	S 06°48'51" W 42.00'
L51	S 83°26'56" E 677.84' (Total)
L52	N 72°11'32" E 42.25'

PERM. DOWN GUY ESMT.

L53	S 08°32'31" W 41.55'
L54	S 08°32'31" W 147.90'
L55	N 70°47'57" E 119.12'
L56	S 06°48'51" W 42.00'
L57	S 83°26'56" E 677.84' (Total)
L58	N 72°11'32" E 42.25'

EXIST. R/W

L59	N 15°29'00" E 471.34'
L60	N 15°27'11" E 473.53' (Total)

DEDICATED R/W PLANNING BOARD MAP dtd 12-4-84

L61	N 15°27'11" E 473.53' (Total)
-----	-------------------------------

PROP. P/L

L62	S 15°27'11" W 474.02' (Total)
-----	-------------------------------

PERM. UTILITY ESMT.

L63	S 11°34'36" W 33.08'
L64	S 23°13'06" W 111.02'

TEMP. CONST. ESMT.

L65	S 05°59'27" W 91.24'
L66	S 15°27'11" W 72.93'
L67	S 08°32'31" W 41.55'
L68	S 08°32'31" W 147.90'
L69	N 70°47'57" E 119.12'
L70	S 06°48'51" W 42.00'
L71	S 83°26'56" E 677.84' (Total)
L72	N 72°11'32" E 42.25'

PERM. DOWN GUY ESMT.

L73	S 08°32'31" W 41.55'
L74	S 08°32'31" W 147.90'
L75	N 70°47'57" E 119.12'
L76	S 06°48'51" W 42.00'
L77	S 83°26'56" E 677.84' (Total)
L78	N 72°11'32" E 42.25'

EXIST. R/W

L79	N 15°29'00" E 471.34'
L80	N 15°27'11" E 473.53' (Total)

DEDICATED R/W PLANNING BOARD MAP dtd 12-4-84

L81	N 15°27'11" E 473.53' (Total)
-----	-------------------------------

PROP. P/L

L82	S 15°27'11" W 474.02' (Total)
-----	-------------------------------

PERM. UTILITY ESMT.

L83	S 11°34'36" W 33.08'
L84	S 23°13'06" W 111.02'

TEMP. CONST. ESMT.

L85	S 05°59'27" W 91.24'
L86	S 15°27'11" W 72.93'
L87	S 08°32'31" W 41.55'
L88	S 08°32'31" W 147.90'
L89	N 70°47'57" E 119.12'
L90	S 06°48'51" W 42.00'
L91	S 83°26'56" E 677.84' (Total)
L92	N 72°11'32" E 42.25'

PERM. DOWN GUY ESMT.

L93	S 08°32'31" W 41.55'
L94	S 08°32'31" W 147.90'
L95	N 70°47'57" E 119.12'
L96	S 06°48'51" W 42.00'
L97	S 83°26'56" E 677.84' (Total)
L98	N 72°11'32" E 42.25'

EXIST. R/W

L99	N 15°29'00" E 471.34'
L100	N 15°27'11" E 473.53' (Total)

DEDICATED R/W PLANNING BOARD MAP dtd 12-4-84

L101	N 15°27'11" E 473.53' (Total)
------	-------------------------------

PROP. P/L

L102	S 15°27'11" W 474.02' (Total)
------	-------------------------------

PERM. UTILITY ESMT.

L103	S 11°34'36" W 33.08'
L104	S 23°13'06" W 111.02'

TEMP. CONST. ESMT.

L105	S 05°59'27" W 91.24'
L106	S 15°27'11" W 72.93'
L107	S 08°32'31" W 41.55'
L108	S 08°32'31" W 147.90'
L109	N 70°47'57" E 119.12'
L110	S 06°48'51" W 42.00'
L111	S 83°26'56" E 677.84' (Total)
L112	N 72°11'32" E 42.25'

PERM. DOWN GUY ESMT.

L113	S 08°32'31" W 41.55'
L114	S 08°32'31" W 147.90'
L115	N 70°47'57" E 119.12'
L116	S 06°48'51" W 42.00'
L117	S 83°26'56" E 677.84' (Total)
L118	N 72°11'32" E 42.25'

EXIST. R/W

L119	N 15°29'00" E 471.34'
L120	N 15°27'11" E 473.53' (Total)

DEDICATED R/W PLANNING BOARD MAP dtd 12-4-84

L121	N 15°27'11" E 473.53' (Total)
------	-------------------------------

PROP. P/L

L122	S 15°27'11" W 474.02' (Total)
------	-------------------------------

PERM. UTILITY ESMT.

L123	S 11°34'36" W 33.08'
L124	S 23°13'06" W 111.02'

TEMP. CONST. ESMT.

L125	S 05°59'27" W 91.24'
L126	S 15°27'11" W 72.93'
L127	S 08°32'31" W 41.55'
L128	S 08°32'31" W 147.90'
L129	N 70°47'57" E 119.12'
L130	S 06°48'51" W 42.00'
L131	S 83°26'56" E 677.84' (Total)
L132	N 72°11'32" E 42.25'

PERM. DOWN GUY ESMT.

L133	S 08°32'31" W 41.55'
L134	S 08°32'31" W 147.90'
L135	N 70°47'57" E 119.12'
L136	S 06°48'51" W 42.00'
L137	S 83°26'56" E 677.84' (Total)
L138	N 72°11'32" E 42.25'

EXIST. R/W

L139	N 15°29'00" E 471.34'
L140	N 15°27'11" E 473.53' (Total)

DEDICATED R/W PLANNING BOARD MAP dtd 12-4-84

L141	N 15°27'11" E 473.53' (Total)
------	-------------------------------

PROP. P/L

L142	S 15°27'11" W 474.02' (Total)
------	-------------------------------

PERM. UTILITY ESMT.

L143	S 11°34'36" W 33.08'
L144	S 23°13'06" W 111.02'

TEMP. CONST. ESMT.

L145	S 05°59'27" W 91.24'
L146	S 15°27'11" W 72.93'
L147	S 08°32'31" W 41.55'
L148	S 08°32'31" W 147.90'
L149	N 70°47'57" E 119.12'
L150	S 06°48'51" W 42.00'
L151	S 83°26'56" E 677.84' (Total)
L152	N 72°11'32" E 42.25'

PERM. DOWN GUY ESMT.

L153	S 08°32'31" W 41.55'
L154	S 08°32'31" W 147.90'
L155	N 70°47'57" E 119.12'
L156	S 06°48'51" W 42.00'
L157	S 83°26'56" E 677.84' (Total)
L158	N 72°11'32" E 42.25'

EXIST. R/W

L159	N 15°29'00" E 471.34'
L160	N 15°27'11" E 473.53' (Total)

DEDICATED R/W PLANNING BOARD MAP dtd 12-4-84

L161	N 15°27'11" E 473.53' (Total)
------	-------------------------------

PROP. P/L

L162	S 15°27'11" W 474.02' (Total)
------	-------------------------------

PERM. UTILITY ESMT.

L163	S 11°34'36" W 33.08'
L164	S 23°13'06" W 111.02'

TEMP. CONST. ESMT.

L165	S 05°59'27" W 91.24'
L166	S 15°27'11" W 72.93'
L167	S 08°32'31" W 41.55'
L168	S 08°32'31" W 147.90'
L169	N 70°47'57" E 119.12'
L170	S 06°48'51" W 42.00'
L171	S 83°26'56" E 677.84' (Total)
L172	N 72°11'32" E 42.25'

PERM. DOWN GUY ESMT.

L173	S 08°32'31" W 41.55'
L174	S 08°32'31" W 147.90'
L175	N 70°47'57" E 119.12'
L176	S 06°48'51" W 42.00'
L177	S 83°26'56" E 677.84' (Total)
L178	N 72°11'32" E 42.25'

EXIST. R/W

L179	N 15°29'00" E 471.34'
L180	N 15°27'11" E 473.53' (Total)

DEDICATED R/W PLANNING BOARD MAP dtd 12-4-84

L181	N 15°27'11" E 473.53' (Total)
------	-------------------------------

PROP. P/L

L182	S 15°27'11" W 474.02' (Total)
------	-------------------------------