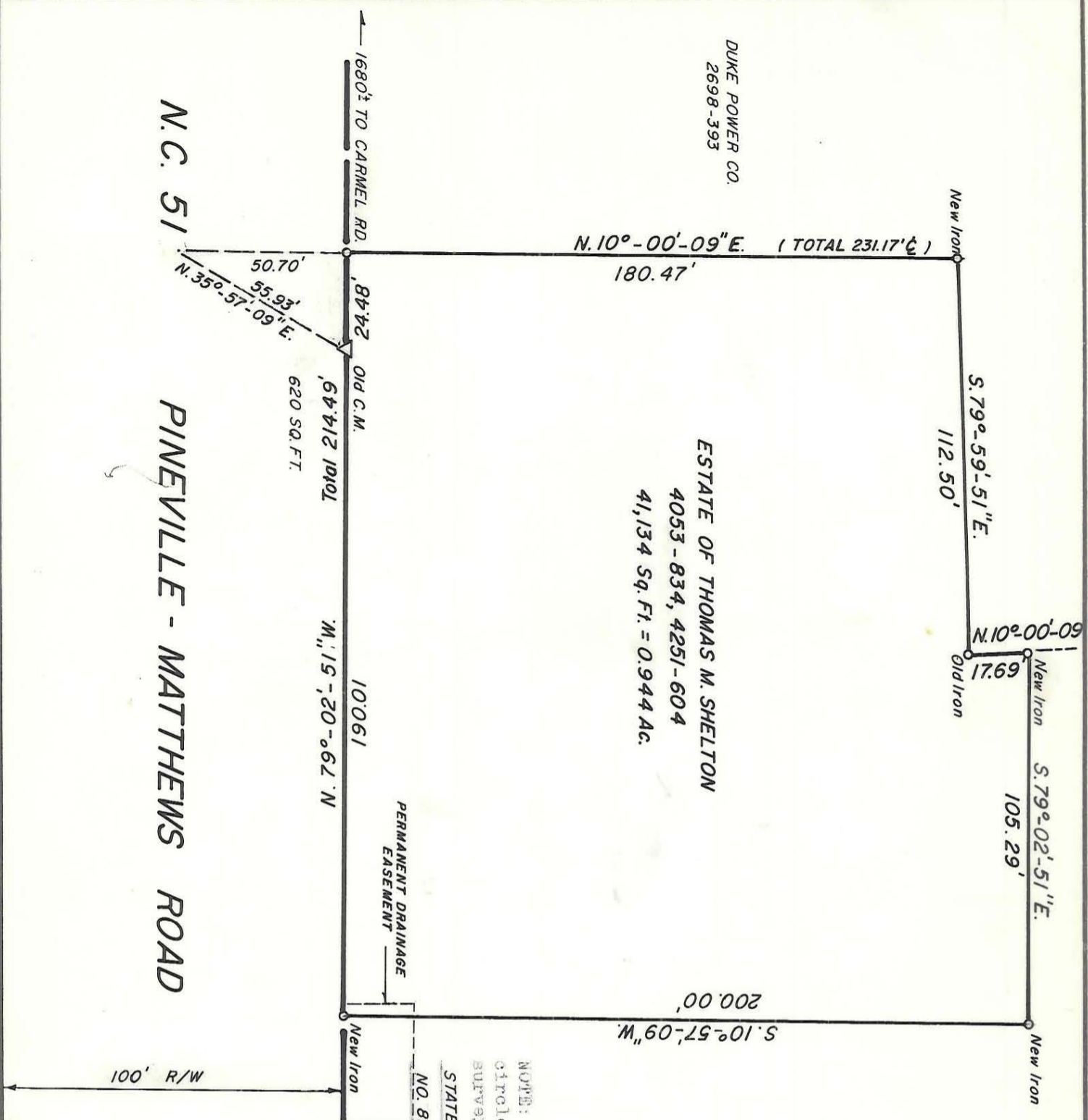


N.C. 51  
PINEVILLE - MATTHEWS ROAD



DUKE POWER CO.  
2698-393

ESTATE OF THOMAS M. SHELTON  
4053 - 834, 4251 - 604  
41,134 Sq. Ft. = 0.944 Ac.

ESTATE OF  
THOMAS M. SHELTON  
4053 - 835

NOTE: Property corners shown, circled were located by actual survey. Bearings are based on STATE HIGHWAY PLANS PROJECT  
NO. 8:1647981



This plat was prepared under my supervision  
*Stephen Gilbert*  
N.C. Reg. Surveyor No. 1-1785



CITY OF CHARLOTTE NORTH CAROLINA DEPARTMENT OF PUBLIC WORKS ENGINEERING DIVISION		PROPERTY TO BE ACQUIRED BY CITY OF CHARLOTTE		JOB NO. 80-101
REVISIONS MAP REDRAWN MAY 27, 1980	DRAWN BY M.S. CHECKED BY S.S.	ESTATE OF THOMAS M. SHELTON	SHEET 1 OF 1	FILE NO.
DATE MAY 27, 1980 SCALE 1" = 40'		CITY ENGINEER		

211-201-12