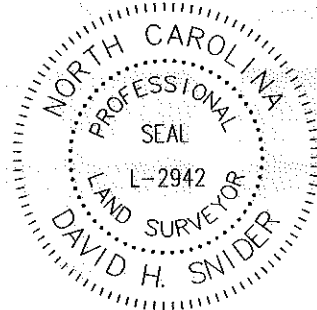


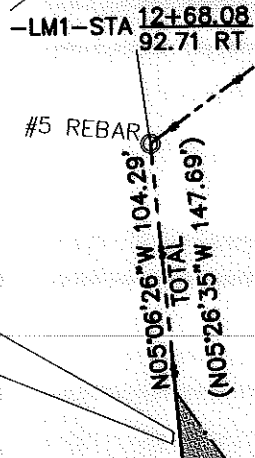
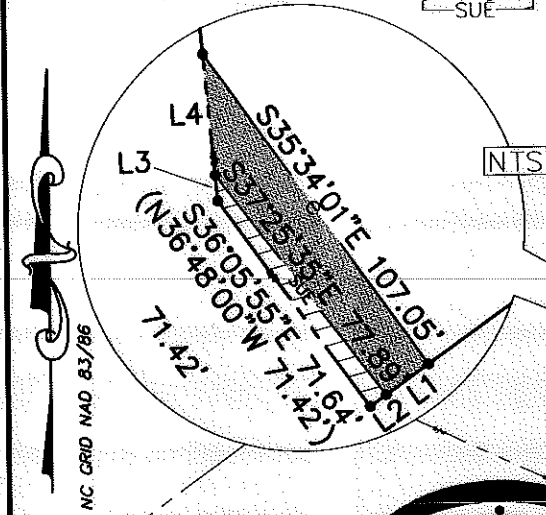
I, DAVID H. SNIDER, CERTIFY THAT THIS PLAT WAS PREPARED UNDER MY SUPERVISION AND THAT THE PLAT WAS PREPARED FOR THE PURPOSE OF EASEMENTS ONLY, AND IS NOT INTENDED TO BE A BOUNDARY SURVEY OF PROPERTY SHOWN.

David H. Snider 9/16/09
 DAVID H. SNIDER, NC P.L.S. L-2942 DATE



LEGEND

- IRON PIN FOUND ○
- RIGHT-OF-WAY MONUMENT □
- CALCULATED POINT ●
- LINES SURVEYED _____
- LINES NOT SURVEYED - - - - -
- TEMP. CONSTRUCTION EASEMENT
- SIDEWALK/UTILITY EASEMENT



LINE TABLE		
LINE	LENGTH	BEARING
L1	14.65	S54°25'59"W
L2	5.52	S54°25'59"W
L3	7.21	N05°06'26"W
L4	33.88	N05°06'26"W

PREPARED BY:
 CITY OF CHARLOTTE
 ENGINEERING DEPARTMENT
 600 EAST FOURTH STREET
 CHARLOTTE, NC 28202
 704-336-2291



SOUTH TRYON ST.
 RIGHT-OF-WAY VARIES

219-243-78
 SAR GROUPS, LLC
 DB 22764-776
 12201 S TRYON ST

219-243-98
 YORKSHIRE HOMEOWNERS
 ASSOC INC
 DB 8074-472
 CARTGATE LN

219-243-79
 ARBOR TRACE
 APARTMENTS, LLC
 DB 14049-01
 12227 ARBOR TRACE DR

- 1) BEARINGS AND DISTANCES SHOWN IN PARENTHESES ARE BASED ON RECORDED MAP INFORMATION.
- 2) TOTAL AREA 117,892 SQ. FT.
- 3) TEMP CONSTRUCTION EASEMENT 1,489 SQ. FT.
- 4) SIDEWALK/UTILITY EASEMENT 354 SQ. FT.
- 5) AREA REMAINING 117,892 SQ. FT.

		JOB NO. 512-09-034	
REVISIONS		209034	
REVISED 9/16/09		SHEET 1	
SCALE 1"=80'		OF 1	
DRAWN BY P.S.		DATE	
DATE		CHECKED BY DS SURVEY SUPVR. <i>DS</i>	
K:\AutoCad\En_su-LD4\209034 S. Tryon Sidewalk\dwg\209034 PLAT REQUEST #2			

ACQUISITION BY DB 27300 PG 765