
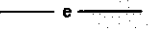


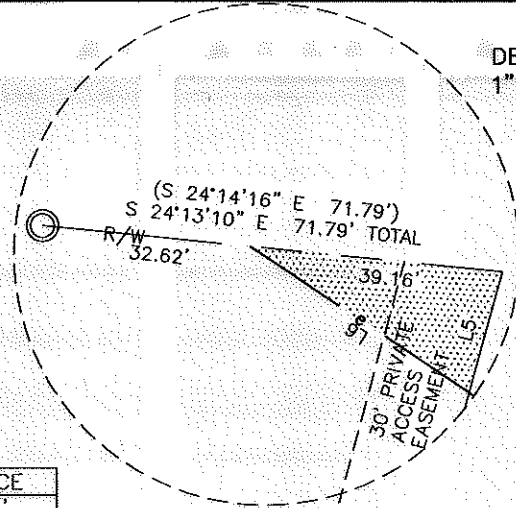


LEGEND

TCE = TEMPORARY CONSTRUCTION EASEMENT

-  = TCE
-  = TCE
-  = EXISTING R/W
-  = IRON PIN FOUND

DETAIL
1" = 30'



LINE	BEARING	DISTANCE
L1	S 78°42'26" E	33.55'
L2	N 11°14'06" E	58.72'
L3	N 65°46'39" E	72.22'
L4	S 65°47'01" W	15.00'
(L4)	(S 65°45'44" W)	(15.00')
L5	S 74°59'59" W	19.52'
L6	N 03°55'12" E	40.86'

CURVE	RADIUS	ARC	CHORD BRG	CHORD
C1	150.00'	166.89'	S 46°51'13" E	158.41'
C2	220.00'	209.23'	N 38°32'44" E	201.43'
C3	25.00'	40.20'	S 69°02'08" E	36.01'
(C3)	(25.00')	(40.31')	(N 69°12'22" W)	(36.08')

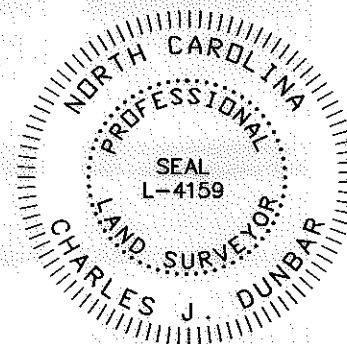
NOTE:

- 1) BEARINGS AND DISTANCES SHOWN IN PARENTHESES ARE BASED ON RECORDED MAP OR DEED INFORMATION.
- 2) TOTAL AREA: 126,132 S.F., 2.896 AC.
- 3) AREA IN TCE: 377 S.F., 0.009 AC.
- 4) FEE AREA REMAINING: 126,132 S.F., 2.896 AC.

I, CHARLES J. DUNBAR, CERTIFY THAT THIS PLAT WAS PREPARED UNDER MY SUPERVISION AND THAT THIS PLAT WAS PREPARED FOR THE PURPOSE OF EASEMENTS ONLY, AND IS NOT INTENDED TO BE A BOUNDARY SURVEY OF PROPERTY SHOWN.

CHARLES J. DUNBAR NC PLS L-4159
DUNBAR GEDMATICS GROUP, PLLC
P.O. BOX 3053
HUNTERVILLE, NC 28070-3053
NC LIC. NO. P-0865

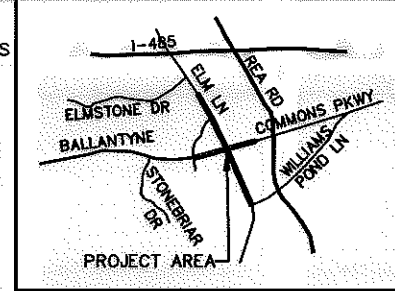
DATE



I, _____ REVIEW OFFICER OF MECKLENBURG COUNTY, CERTIFY THAT THE MAP OR PLAT TO WHICH THIS CERTIFICATION IS AFFIXED MEETS ALL STATUTORY REQUIREMENTS OF NORTH CAROLINA GENERAL STATUTES FOR RECORDING.

REVIEW OFFICER

DATE



VICINITY MAP
NOT TO SCALE

BALLANTYNE TRACE COURT
PUBLIC R/W VARIABLE WIDTH



TAX # 22360504, 22360505, 22360508, 22360507, 22360508, 22360509, 22360510, 22360511, 22360512, 22360513, 22360514, 22360515, 22360518, 22360517, 22360518 & 22360519
CONDOMINIUM UNIT OWNERS OF THE FORUM AT BALLANTYNE COMMONS
OFFICE CONDOMINIUM REPRESENTED BY
THE FORUM AT BALLANTYNE COMMONS OFFICE CONDOMINIUM ASSOCIATION, INC.
D.B. 13606, PG. 92
D.B. 11375, PG. 507
UNIT FILE NO. 603, PG. 1
UNIT FILE NO. 613, PG. 9
MB. 36, PG. 41
11220 ELM LANE

TAX # 22360501
UNITED STATES POSTAL SERVICE
DB. 8999, PG. 295
MB. 27, PG. 994
8240 BALLANTYNE COMMONS PKWY



TAX # 22360502
SOUTHTRUST BANK,
AN ALABAMA BANKING CORPORATION
DB. 13933, PG. 35
MB. 36, PG. 41
ELM LANE WEST

10003.08v02_PARCEL 08



Plans Prepared By:
5200 77 CENTER DRIVE, SUITE 500
CHARLOTTE, NORTH CAROLINA 28217
(704) 522-7275 NCCOA: F-0326

REVISIONS		JOB NO.
9/22/11: UPDATE OWNER INFO	BALLANTYNE COMMONS PKWY / ELM LANE INTERSECTION IMPROVEMENTS	512-08-011
SCALE 1" = 100'		FILE NO.
DRAWN BY: SLB		PARCEL 08
DATE: 7/28/11		SHEET
CHECKED BY: CJD		1
SURVEY SUPVR.: RGG		OF
		1