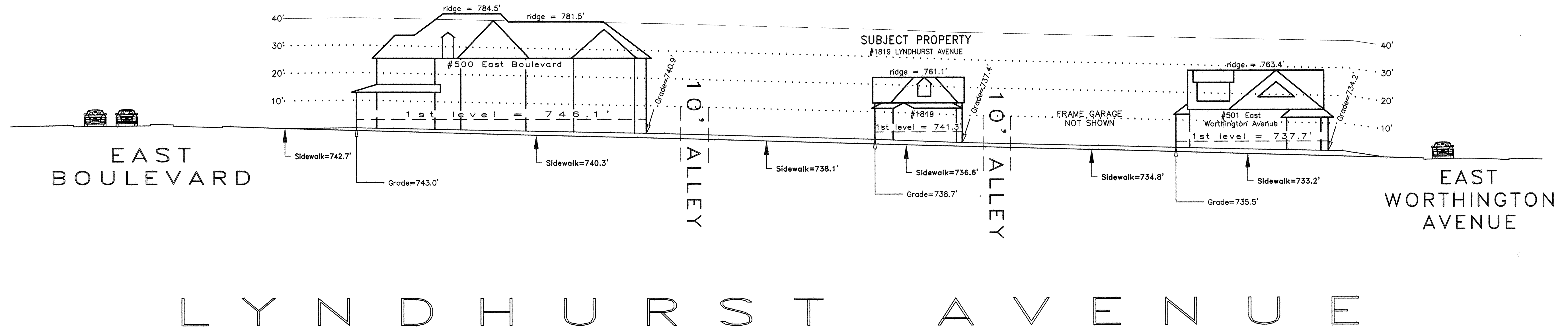


I hereby certify that this schematic drawing was prepared based on field-surveyed elevation measurements of the points shown hereon. This map is not intended to meet G.S. 47-30 recording requirements.

This 29th day of June, 2015.

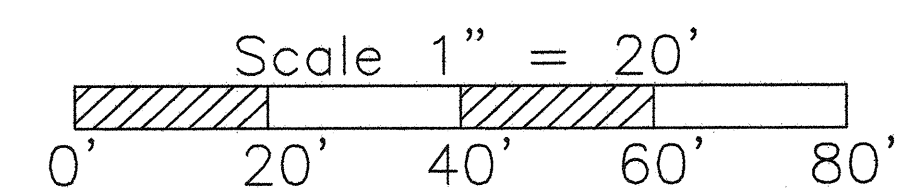


A.G.Z.
 Andrew G. Zoutewelle
 Professional Land Surveyor
 NC License No. L-3098



A.G. ZOUTEWELLE
SURVEYORS
 1418 East Fifth St. Charlotte, NC 28204
 Phone: 704-372-9444 Fax: 704-372-9555
 Firm Licensure Number C-1054

Copyright 2015
 Building Heights Sketch of
1800 BLOCK of LYNDHURST AVENUE
ODD SIDE - FACING SOUTHEAST
 CHARLOTTE, MECKLENBURG COUNTY, N.C.
 for Charlotte-Mecklenburg Planning Department
 June 24, 2015



General Notes:
 1. The purpose of this Building Heights Sketch is to show existing building facade heights relative to the elevation points at the public sidewalk, front yard grade ("Grade"), 1st level, and ridgeline of the houses depicted hereon. No rearyard or sideyard measurements were made. The heights shown hereon were derived from indirect measurements and are not intended for structural design.
 2. The vertical datum for these elevation measurements is the North American Vertical Datum of 1988 (i.e., sea level). All other information and graphics are conceptual in nature and are not intended to represent accurate architectural or landscape features.