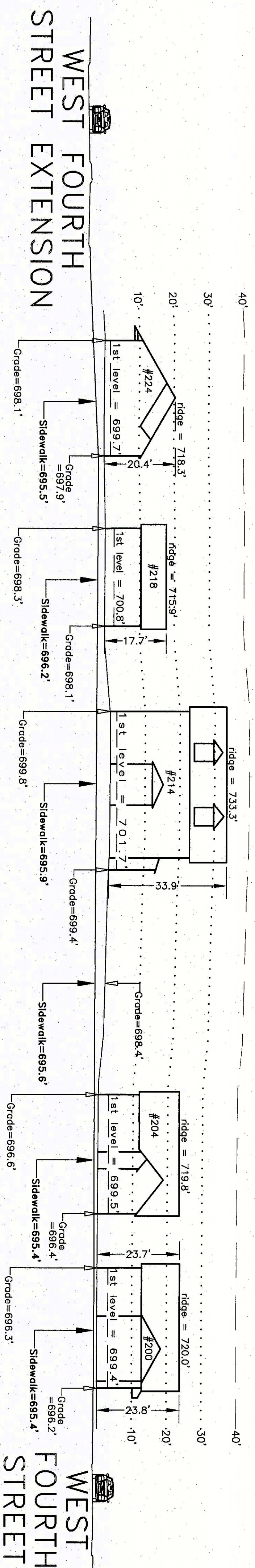
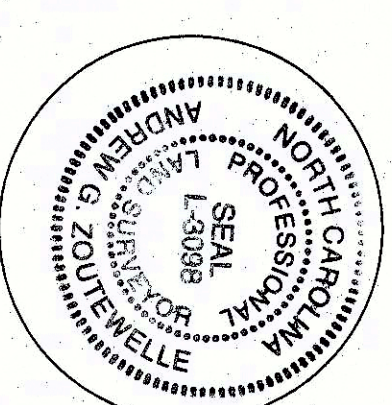


I hereby certify that this schematic drawing was prepared based on field-surveyed elevation measurements of the points shown hereon. This map is not intended to meet G.S. 47-30 recording requirements.

This 7th day of June, 2018.

A.G.Z.
Andrew G. Zoutewelle
Professional Land Surveyor
NC License No. L-5098



GRANDIN ROAD

A.G. ZOUTEWELLE
SURVEYORS
1418 East Fifth St. Charlotte, NC 28204
Phone: 704-572-9444 Fax: 704-572-9555
Firm Licensure Number C-1054

Copyright 2018

Building Heights Sketch of

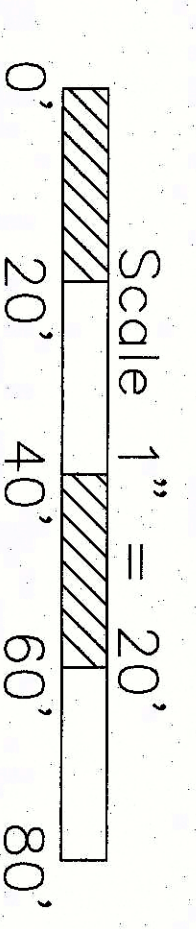
200 BLOCK of GRANDIN ROAD

FACING NORTHWEST - EVEN SIDE

CHARLOTTE, MECKLENBURG COUNTY, N.C.

for Charlotte-Mecklenburg Planning Department

June 5, 2018



- General Notes:
1. The purpose of this Building Heights Sketch is to show existing building facade heights relative to the elevation points at the public sidewalk or top of curb, front yard grade ("Grade"), 1st level, and ridge of the houses depicted hereon. No rearward or sidewalk measurements were made. The heights shown hereon were derived from indirect measurements and are not intended for structural design.
 2. The vertical datum for these elevation measurements is the North American Vertical Datum of 1988 (i.e., sea level). All other information and graphics are conceptual in nature and are not intended to represent accurate architectural or landscape features.