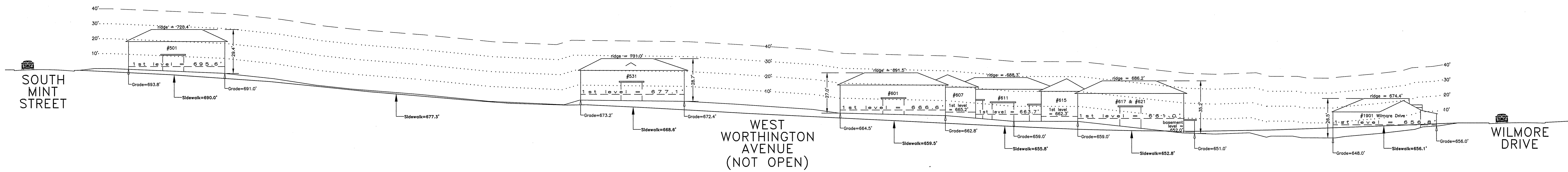


I hereby certify that this schematic drawing was prepared based on field-surveyed elevation measurements of the points shown hereon. This map is not intended to meet G.S. 47-30 recording requirements.

This 3rd day of May, 2017.



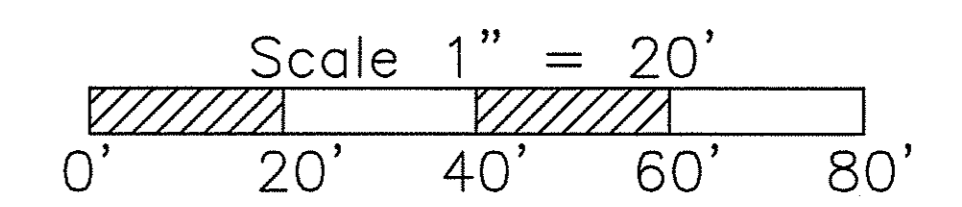
*A.G.Z.*  
Andrew G. Zoutewelle  
Professional Land Surveyor  
NC License No. L-3098



W E S T B O U L E V A R D

**A.G. ZOUTEWELLE**  
**SURVEYORS**  
1418 East Fifth St. Charlotte, NC 28204  
Phone: 704-372-9444 Fax: 704-372-9555  
Firm Licensure Number C-1054

Copyright 2017  
Building Heights Sketch of  
**500-600 BLOCK of WEST BOULEVARD**  
FACING SOUTH - ODD SIDE  
CHARLOTTE, MECKLENBURG COUNTY, N.C.  
for Charlotte-Mecklenburg Planning Department  
May 1, 2017



General Notes:  
1. The purpose of this Building Heights Sketch is to show existing building facade heights relative to the elevation points at the public sidewalk or top of curb, front yard grade ("Grade"), 1st level, and ridgeline of the houses depicted hereon. No rear yard or side yard measurements were made. The heights shown hereon were derived from indirect measurements and are not intended for structural design.  
2. The vertical datum for these elevation measurements is the North American Vertical Datum of 1988 (i.e., sea level). All other information and graphics are conceptual in nature and are not intended to represent accurate architectural or landscape features.