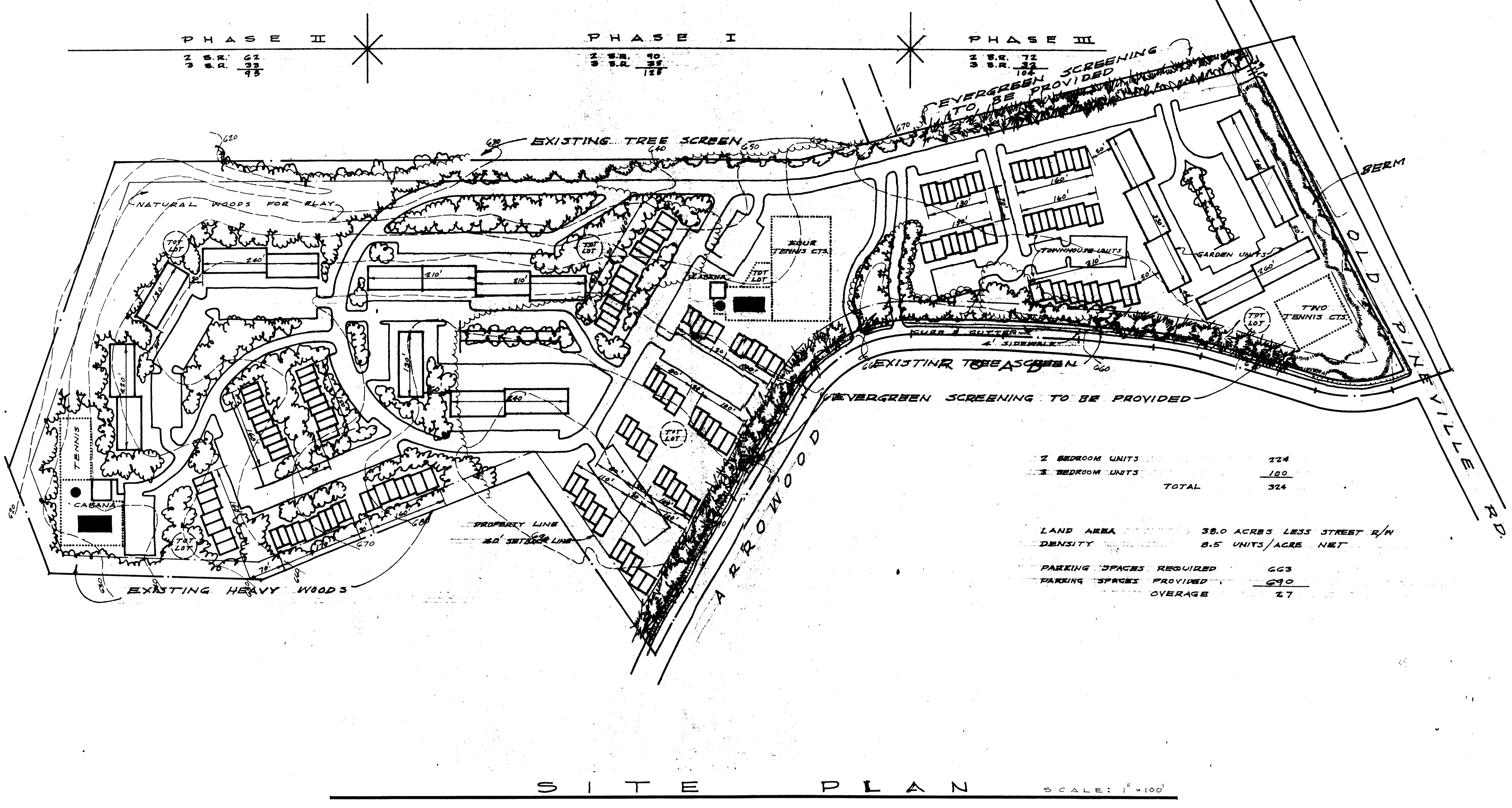


72-29(c)



2 BEDROOM UNITS	324
3 BEDROOM UNITS	100
<b>TOTAL</b>	<b>324</b>
LAND AREA	38.0 ACRES LESS STREET R/W
DENSITY	8.5 UNITS/ACRE NET
PARKING SPACES REQUIRED	663
PARKING SPACES PROVIDED	670
<b>AVERAGE</b>	<b>1.0</b>

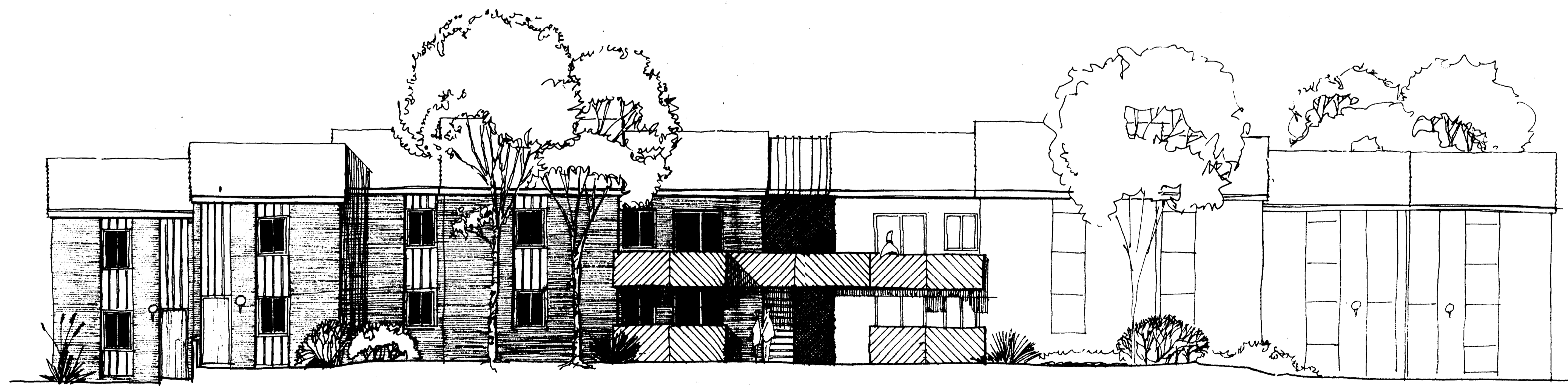
S I T E P L A N SCALE: 1"=100'

Approved by County Comm. 11/20/72  
1972-29(c)

FEREBEE, WALTERS AND ASSOCIATES • ARCHITECTS / PLANNERS  
 MEMBERS OF THE AMERICAN INSTITUTE OF ARCHITECTS  
 4037 EAST INDEPENDENCE BOULEVARD  
 CHARLOTTE, NORTH CAROLINA 28205  
 TELEPHONE (704) 536-1263

ARROWOOD CONDOMINIUMS  
 SOUTHLAND PROPERTIES, INC., GREENVILLE, S.C.

REVISIONS: 11-11-72 283.01  
 11-7-72 SHEET NO.



T Y P I C A L E L E V A T I O N 1/8"=1'-0"

FEREBEE, WALTERS AND ASSOCIATES • ARCHITECTS / PLANNERS  
 MEMBERS OF THE AMERICAN INSTITUTE OF ARCHITECTS  
 4037 EAST INDEPENDENCE BOULEVARD  
 CHARLOTTE, NORTH CAROLINA 28205  
 TELEPHONE (704) 536-1263

ARROWOOD CONDOMINIUMS  
 SOUTHLAND PROPERTIES, INC., GREENVILLE, S.C.

REVISIONS: 11-11-72 283.01  
 11-7-72 SHEET NO.