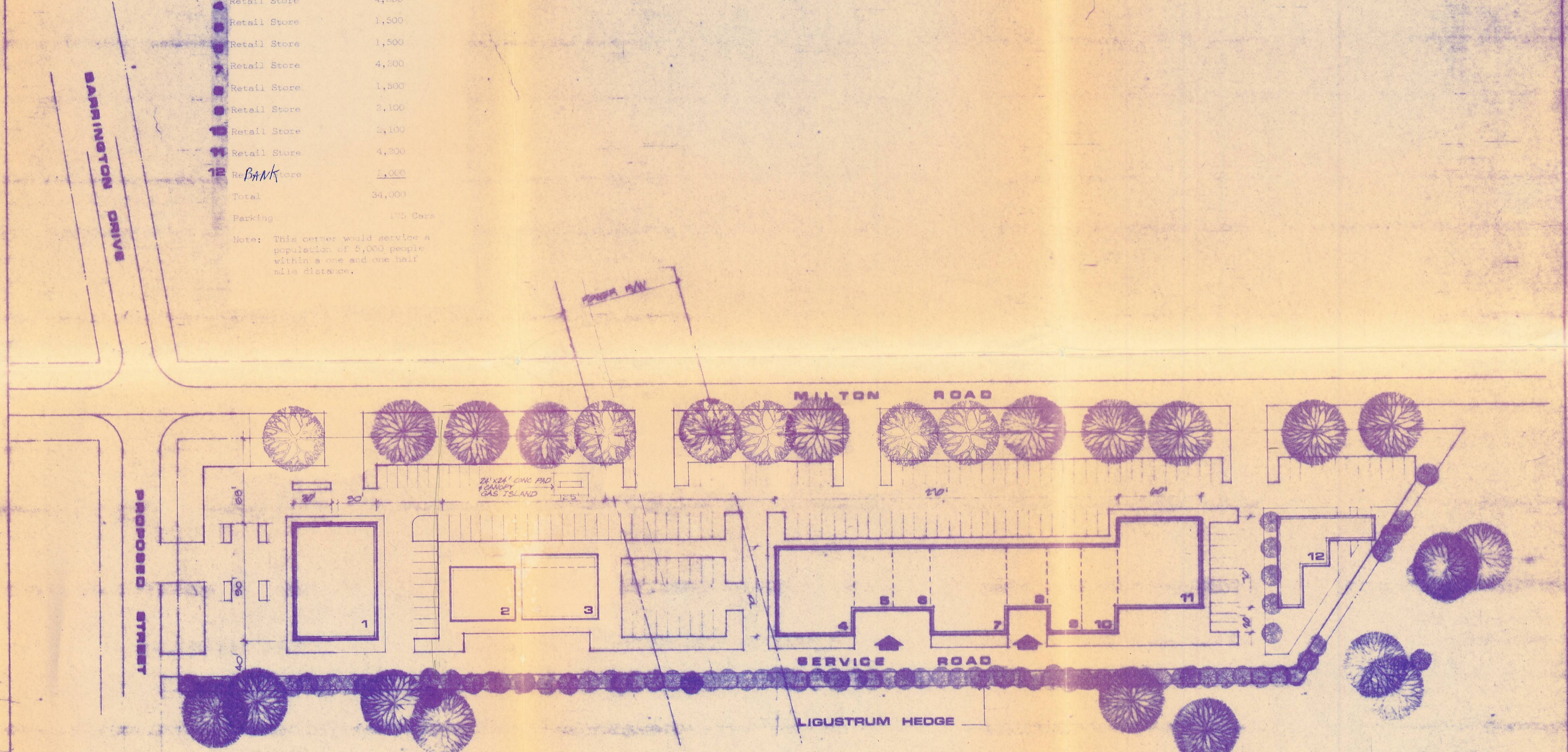


**LEGEND**

●	Service Station	2,800'
■	Retail Store	2,500'
●	Convenience Store	2,400'
●	Retail Store	4,200'
●	Retail Store	1,500'
●	Retail Store	1,500'
●	Retail Store	4,200'
●	Retail Store	1,500'
●	Retail Store	2,100'
●	Retail Store	2,100'
●	Retail Store	4,200'
12	Bank	1,000'
	Total	34,000'
	Parking	175 Cars

Note: This center would service a population of 5,000 people within a one and one half mile distance.



**SITE PLAN** 1" = 50'-0"

8/9/72  
 RESOLUTION APPROVED BY  
 City Council 3/26/73 Petitioner 79-37

**SHOPPING CENTER**

**DELLINGER & LEE - ARCHITECTS & PLANNERS**  
 3 WOODLAWN GREEN 204 WOODLAWN ROAD  
 CHARLOTTE, NORTH CAROLINA 28210

**LEGEND**



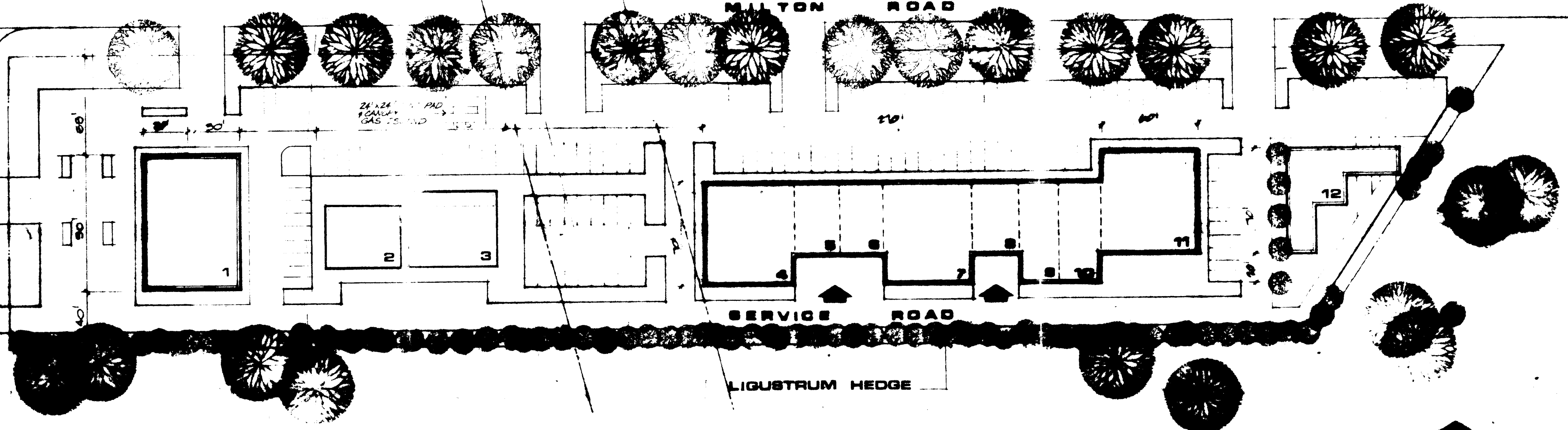
BANK

BARRINGTON DRIVE

Prop. 20'

MILTON ROAD

PROPOSED STREET



**SITE PLAN 1" = 50'-0"**

ORDINANCE APPROVED BY City Council 3/26/72



5/5/72 Petition 72-37

**SHOPPING CENTER**

**DELLINGER & LEE - ARCHITECTS & PLANNERS**  
3 WOODLAWN GREEN 804 WOODLAWN ROAD  
CHARLOTTE, NORTH CAROLINA 28210