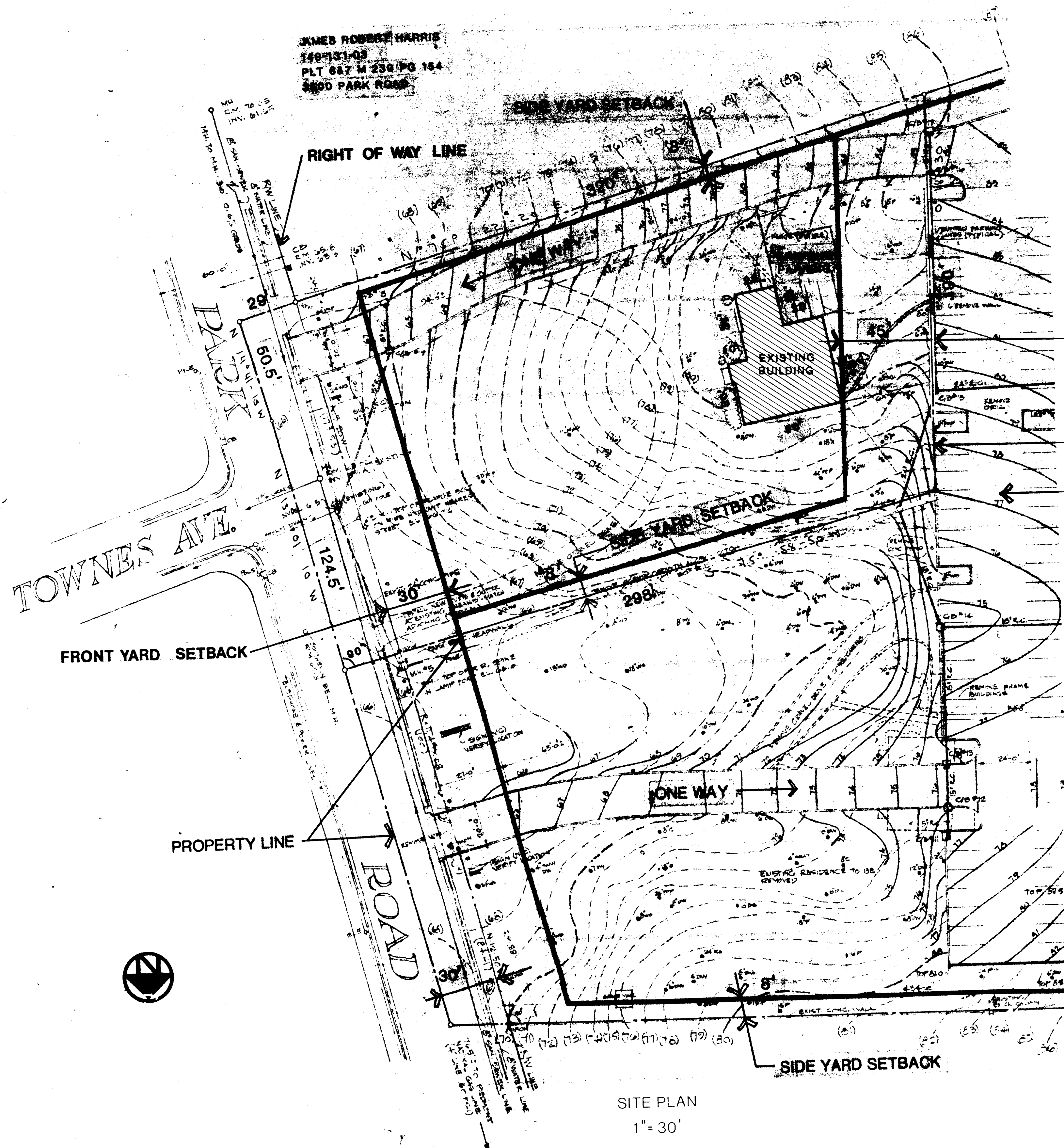


JAMES ROBERT HARRIS  
149-131-04  
PLT 517 M 230 PG 154  
3420 PARK ROAD



REAR YARD SETBACK

PROPERTY LINE

PARKING FOR THE EXISTING YWCA OF CHARLOTTE, INC.

149-131-04 ZONED R-9  
DEED BOOK 2375 PG 47  
PTL 5-7M230 154  
3420 PARK ROAD

YWCA GROUP HOME, 3424 PARK ROAD  
LOCATED ON A SECTION OF  
YWCA PROPERTY  
3420 PARK ROAD, CHARLOTTE, N.C.

76-71

13 SEPTEMBER 1976  
REVISED 18 OCTOBER 1976

BOOK 149 PG 131-04  
CONDITIONAL USE APPLICATION

*As Approved by Council 12/21/76*

SITE PLAN  
1" = 30'

*clerk*