

ZONED I-2

William F. Cherry & Wife
3759-203
(T/C 01-64-13)

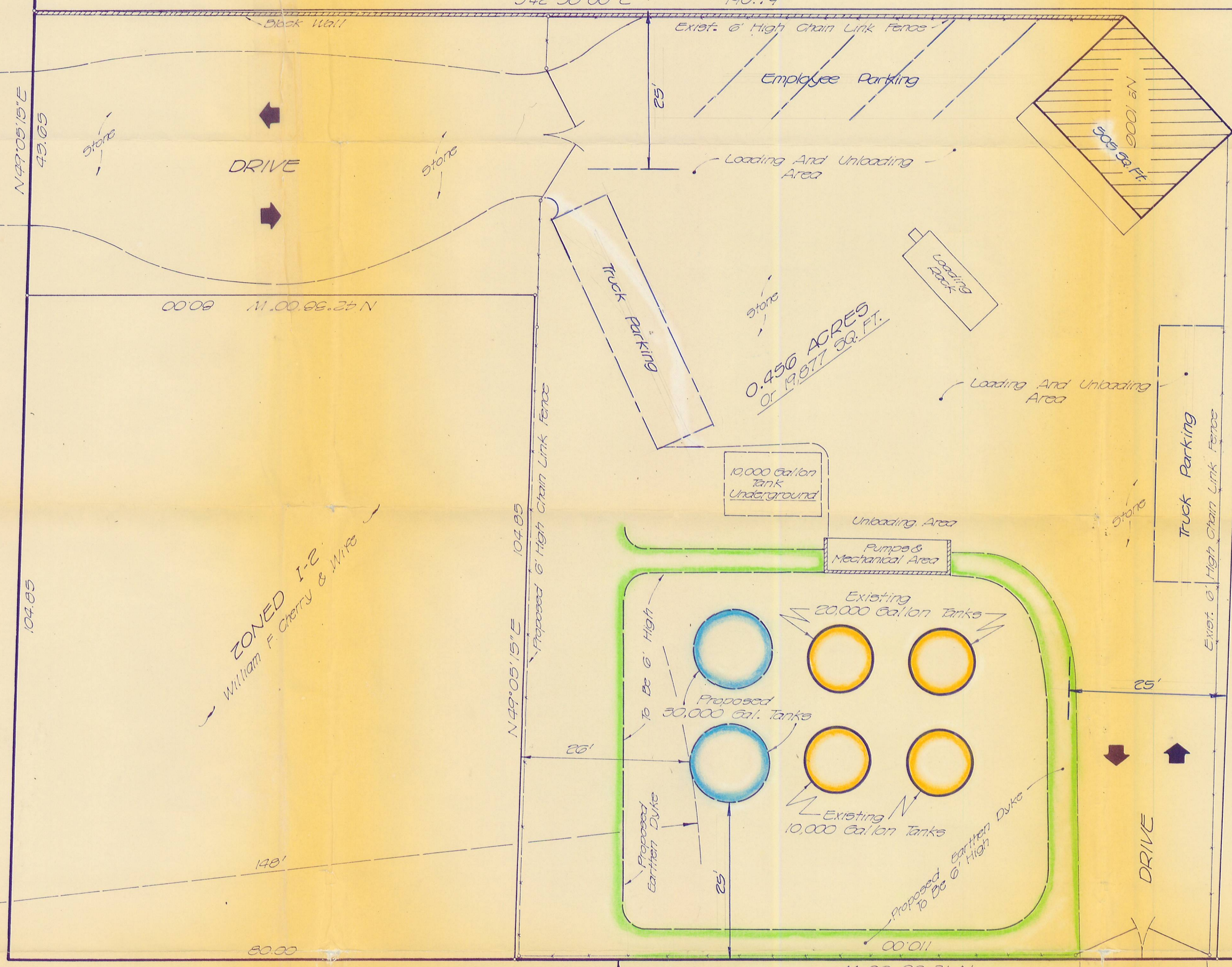
Evco Const. Co., Inc.
3641-139
(T/C 01-64-6)

David Kinney & Wf. Effie C. Kinney
3639-877
(T/C 01-65-6)

ADD. E. Bennett
(T/C 01-65-5)

David Kinney & Wf. Effie C. Kinney
3639-876
(T/C 01-65-4)

NORTH CALDWELL ST.

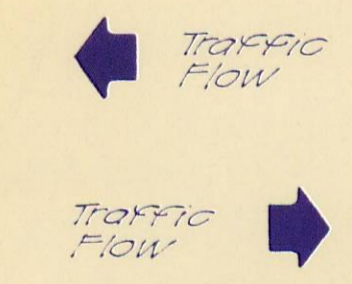
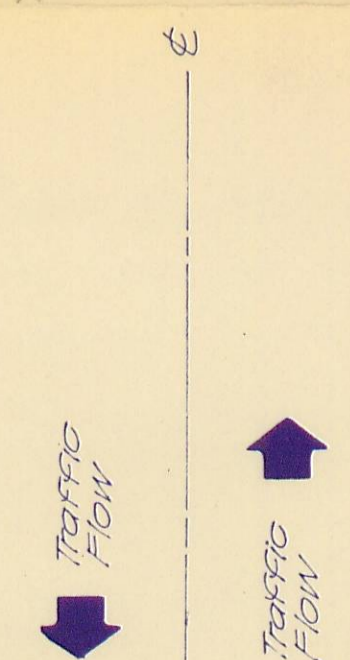
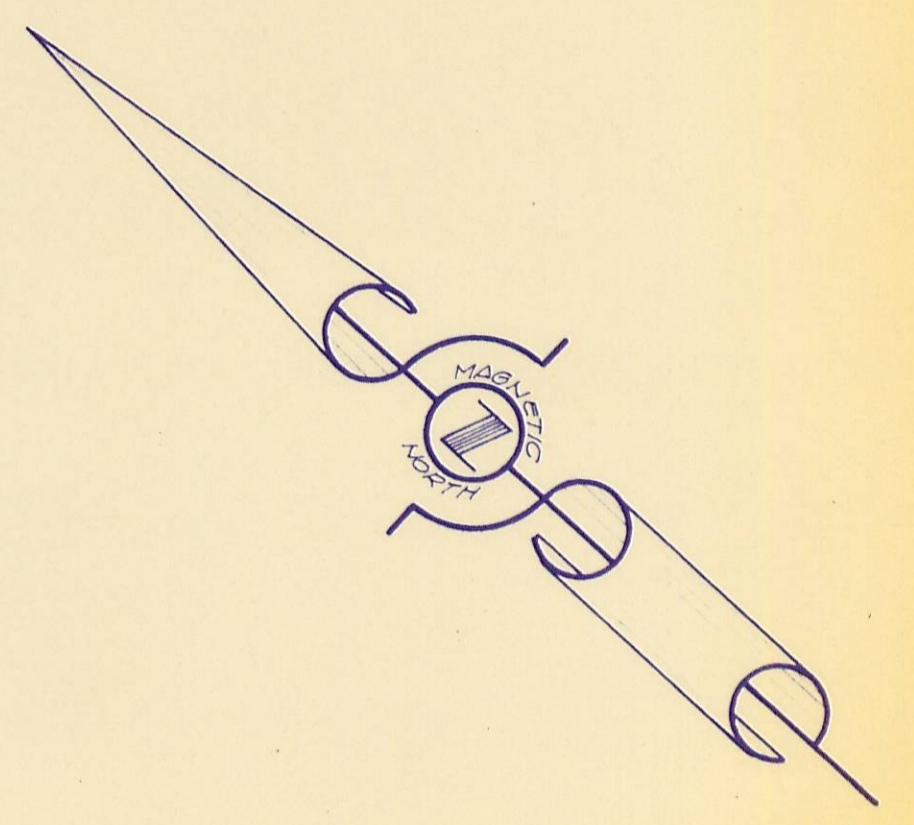


Hugh Caswell Mitchell
(T/C 01-64-5)

Wm. W. Washburn
1766-485
(T/C 01-64-4)

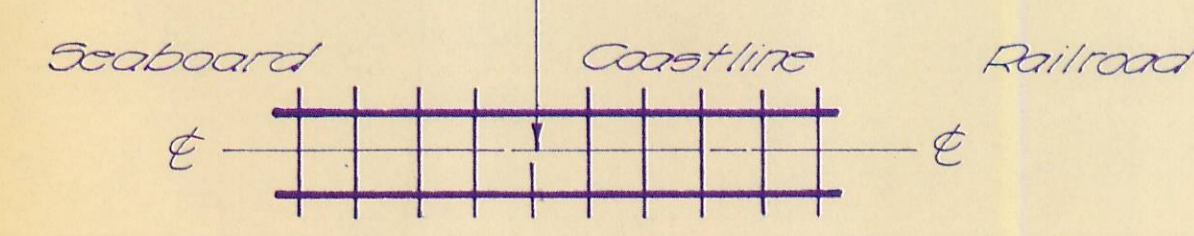
Wm. W. Washburn
1766-484
(T/C 01-64-5)

ZONED I-2



E. 13TH ST.

No Access



as approved 10/10/77

REVISIONS	Survey For:
	WILLIAM F. CHERRY
	R.B. PHARR & ASSOCIATES
	SURVEYING & MAPPING
	212 E. INDEPENDENCE BLVD. CHARLOTTE, N.C. 28204
	SCALE: 1" = 10 Feet DATE: June 1977 FILE NO: W-295

77-33

ZONED I-2

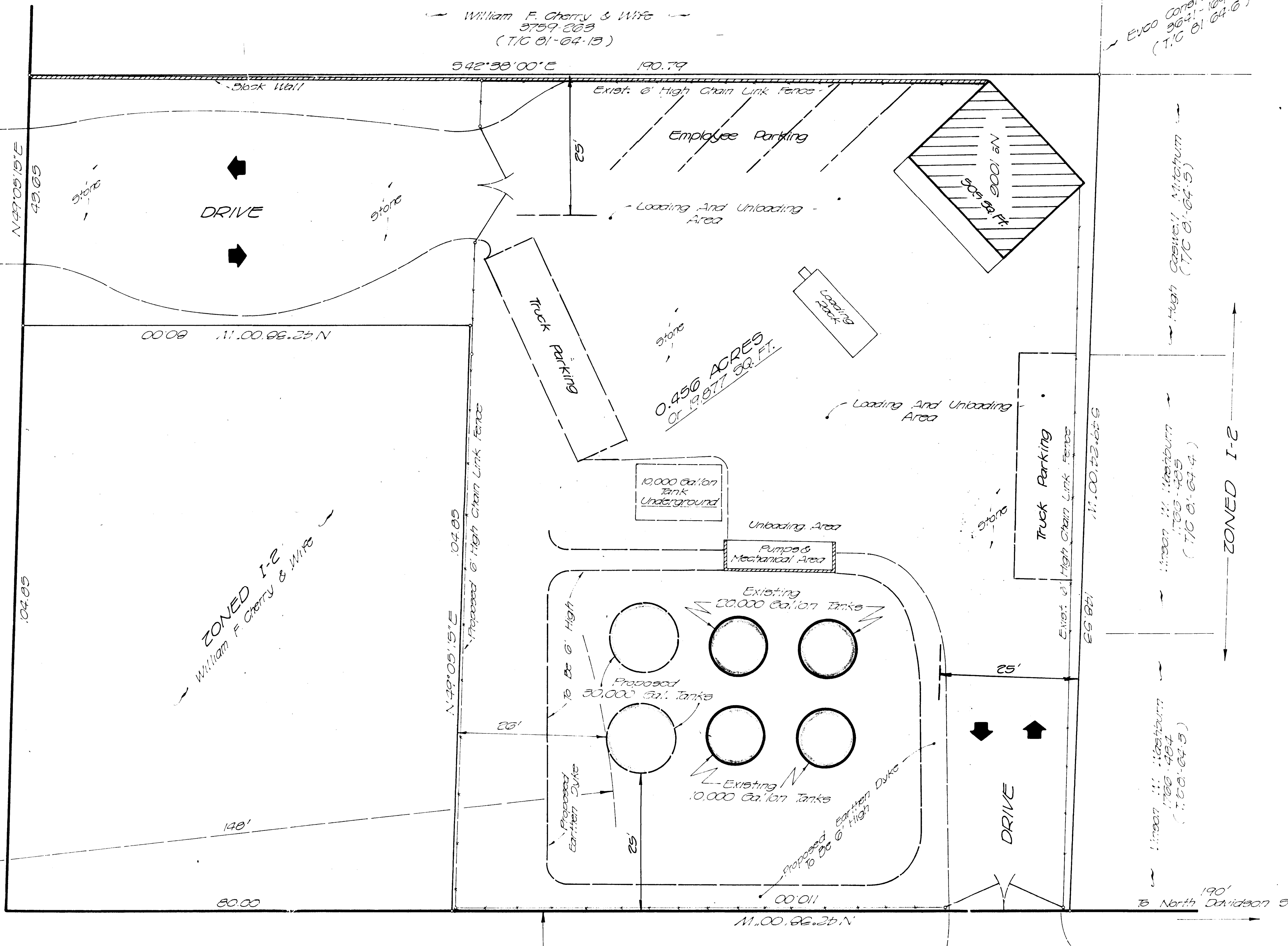
David Kinney & Wf. Effie C. Kinney
3655-876
T/C 01-63-4

ADD E. Bennett
T/C 01-63-5

David Kinney & Wf. Effie C. Kinney
3655-877
T/C 01-63-6

NORTH CALDWELL ST.

Traffic Flow
Traffic Flow



ZONED I-2

William F. Cherry & Wife
3759-869
(T/C 01-64-13)

EVCO Const. Co., Inc.
3641-189
(T/C 01-64-6)

Hugh Casper, Jr. Mitchum
(T/C 01-64-5)

Wm. W. Washburn
1766-484
(T/C 01-64-4)

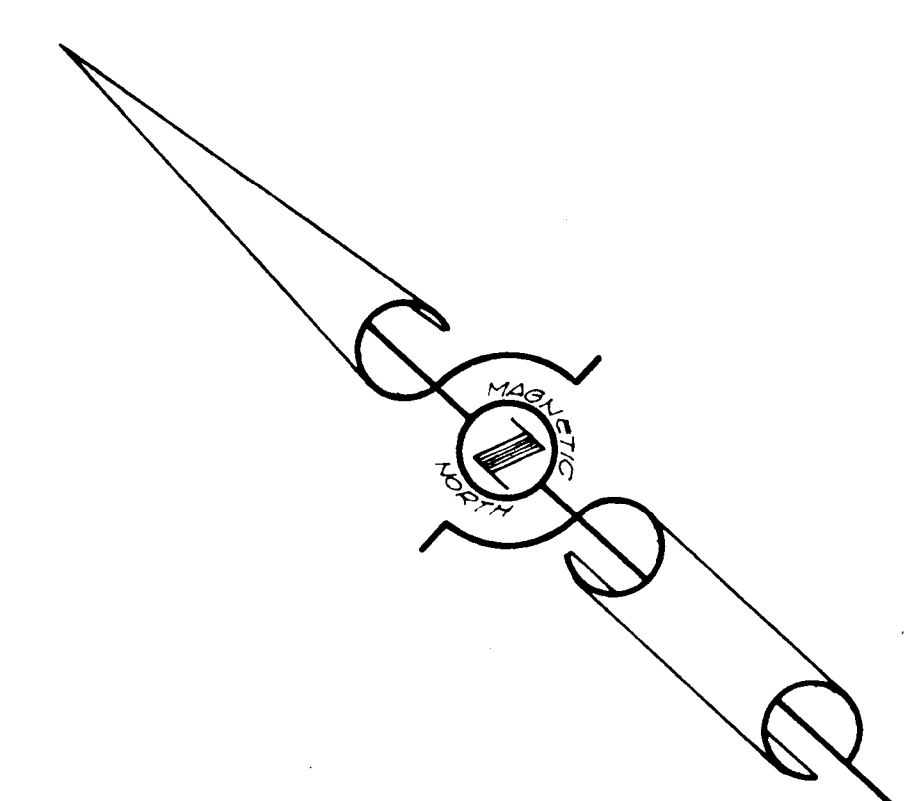
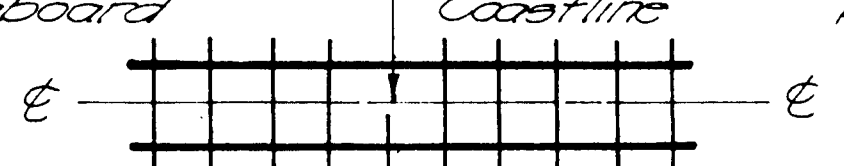
Wm. W. Washburn
1766-484
(T/C 01-64-5)

To North Davidson St.

E. 13TH ST.

Traffic Flow
Traffic Flow

Seaboard Coastline Railroad



as approved 10/10/77

REVISIONS	DATE	FILE NO.

Survey for:
WILLIAM F. CHERRY

R.B. PHARR & ASSOCIATES
SURVEYING & MAPPING
212 E. INDEPENDENCE BLVD. CHARLOTTE, N.C. 28204

SCALE: 1" = 10 Feet DATE: June 1977 FILE NO. W-295