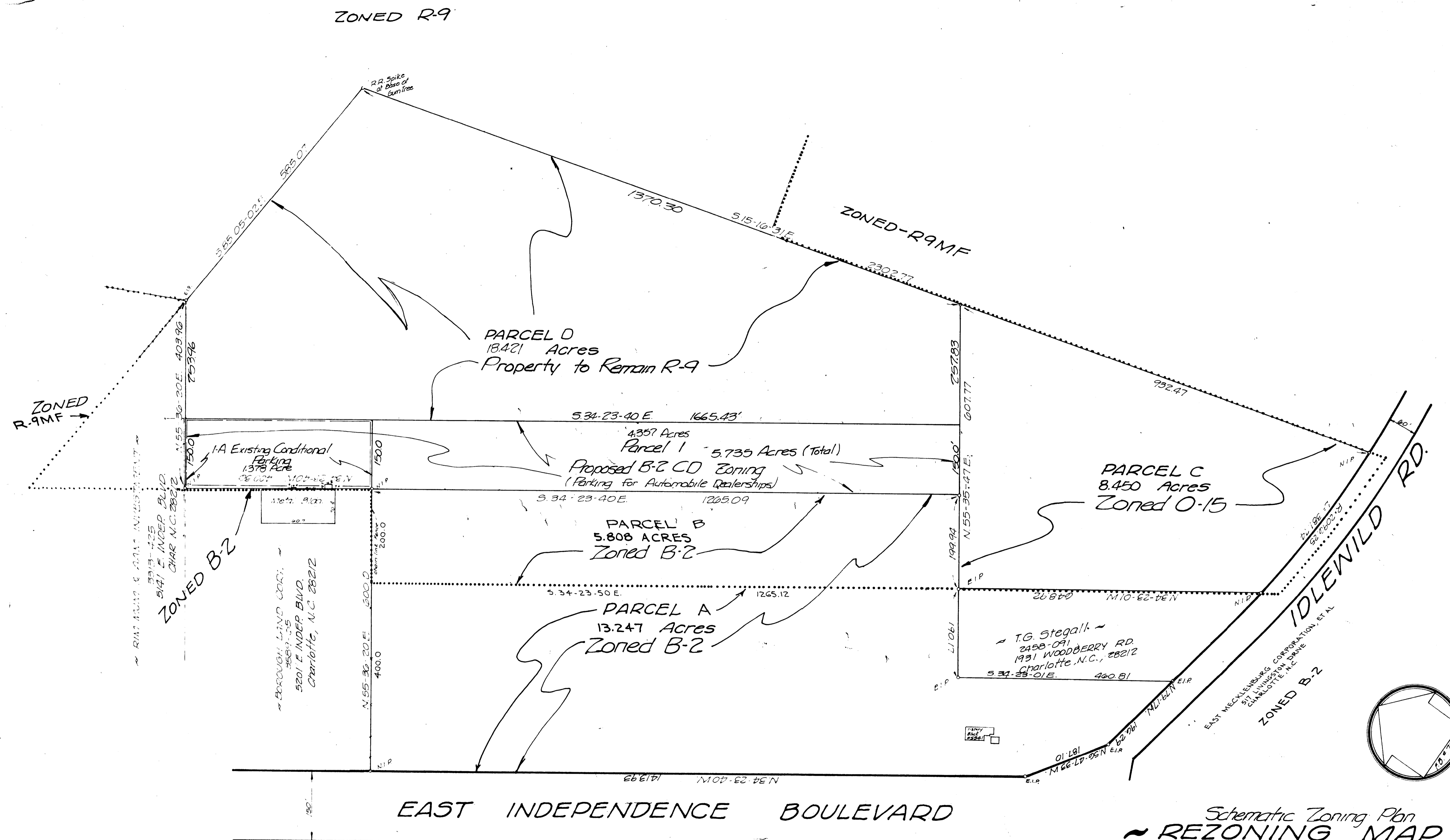


As Approved 12/18/78



With Respect to Parcel I
 The screening requirement imposed by
 the provisions of Section 23-56 of
 the Charlotte Zoning Ordinance
 must be met.

LIMITATIONS OF USES ON PARCEL I
 1) B-2 Uses limited to parking of motor vehicles
 in connection with Auto Dealerships.

NOTE:
 PARCELS A, B, C, D, and I-A OWNED BY
 I.G. WALLACE, JR. & J. LIGHTSEY WALLACE TRUST

Schematic Zoning Plan
REZONING MAP
 SURVEY FOR
 I.G. WALLACE, JR. & J. LIGHTSEY WALLACE TRUST
 % FIRST UNION NATIONAL BANK
 CHARLOTTE, N.C.
 by: R.B. PHARR & ASSOC.
 N.C.R.L.S.



REVISIONS
 May 3, 1978
 July 6, 1978
 July 14, 1978
 Aug. 15, 1978
 Oct. 4, 1978
 Dec. 1, 1978

Date: April 1978
 Scale: 1" = 100'